



## Putney Hill, SW15

£495,000

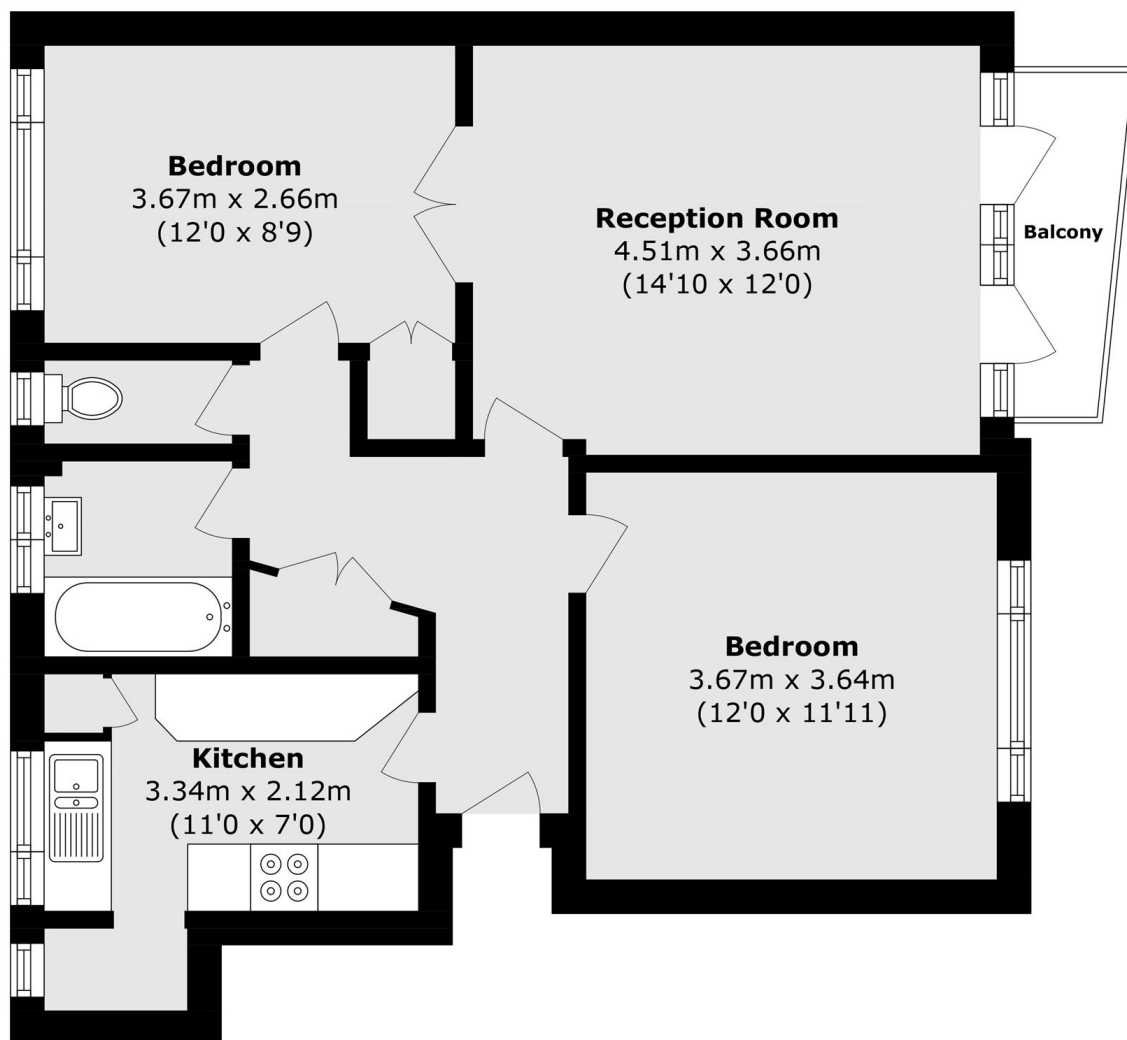
A well-proportioned two double bedroom apartment set on the ground floor of a well-maintained purpose-built block on Putney Hill. Offering approximately 688 sq ft of internal space, the property features a bright reception room with large windows overlooking the communal gardens, a separate fitted kitchen, two generous bedrooms with ample storage, a family bathroom and a separate WC.

Ideally located for the green open spaces of Putney Heath and Wimbledon Common, the property is also within easy reach of the shops, cafés and restaurants of Putney High Street. Transport links are excellent, with Putney railway station providing direct services into Waterloo, as well as East Putney Underground station offering convenient access across London.

### Features

- Two Bedrooms
- Chain Free
- 688 sq. ft
- Garage Available By Separate Negotiation
- Communal Garden
- Balcony

# Putney Hill, London, SW15



Total area (approx.): 63.9 sq. m (687.8 sq. ft)