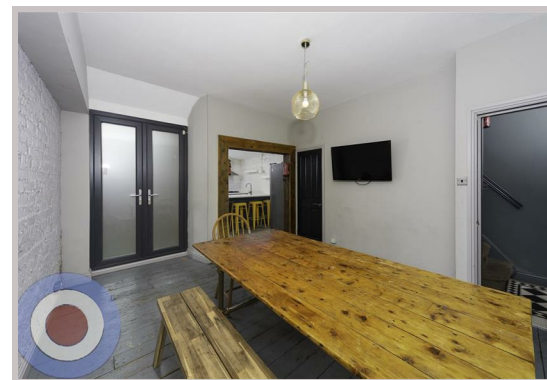




25 Ruskin Avenue  
Manchester  
M14 4DP



# 25 Ruskin Avenue

## £736 Per month

\*6 BED BEING LET AS A 5 BED\*

This stylish 6-bedroom, 3-storey house is perfectly located in Whitworth Park, just a short walk from the university. Packed with original features and individually styled bedrooms, including fun touches like leopard print wallpaper in the bathroom, it's full of character.

All six bedrooms are doubles, providing plenty of space for students, and the open-plan kitchen-diner is perfect for socialising and group living.

Communal cleaning included can be added if needed.

£170 pppw Bills included

- NO DEPOSIT
- ALL BILLS INCLUDED
- COMMUNAL CLEANING INCLUDED
- ALL DOUBLE BEDROOMS
- ENERGY EFFICIENT HOUSE C OR ABOVE
- LOCATED IN WHITWORTH PARK

Local Authority  
Manchester

Council Tax Band Exempt

EPC Rating B

Contact

01613992619

hello@welcometomanchesterlettings.com

www.welcometomanchesterlettings.com

