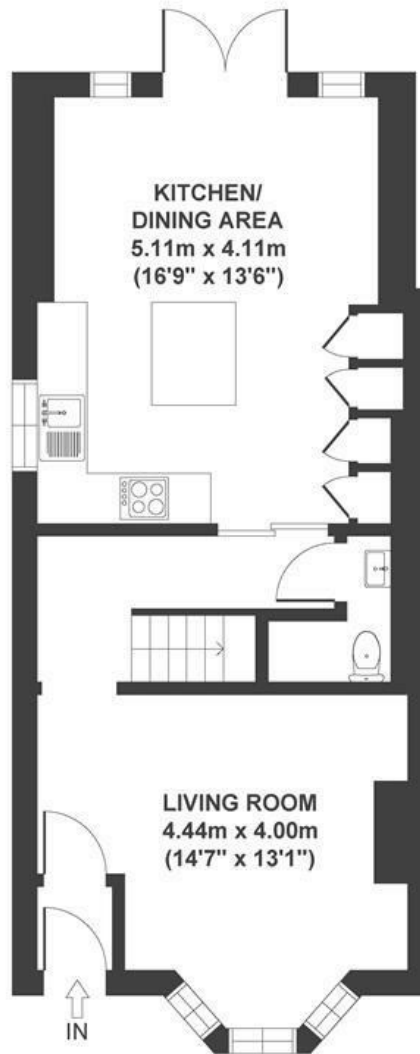


# Kellaway Avenue

## HENLEAZE

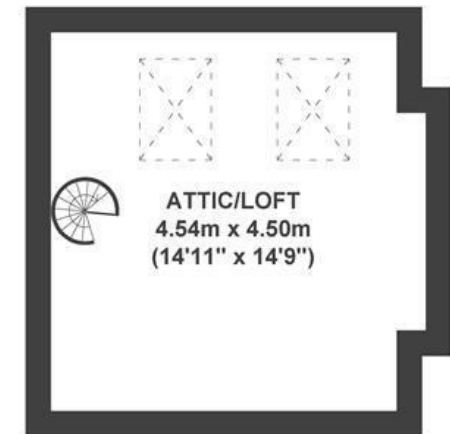
APPROXIMATE FLOOR AREA  
101 SQM / 1087 SQFT



GROUND FLOOR



FIRST FLOOR



SECOND FLOOR

Boardwalk

# Kellaway Avenue , BRISTOL

£

£500,000



BS6 7YJ

zZz

2 Bedrooms



1 Bathrooms

*"What we'll remember most is how easy it is to head out and it just works. We'll grab something from a bakery on Gloucester Road or Henleaze, walk around Horfield Common and be home before it feels like a proper trip. But we'll miss the evenings most. We always end up in the open plan kitchen, cooking and chatting. It's bright and cosy and it's where this place has felt like home."*

