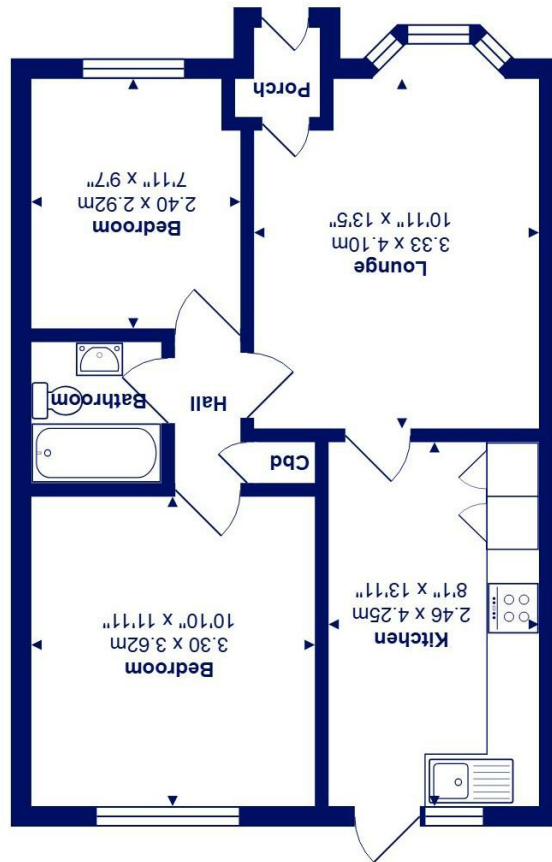




All measurements are approximate and for display purposes only
Total Area: 51.3 m² ... 552 ft²



16 Johnstone Road, Stanpit, BH23 3NG *£365,000*

Mitchells
1963 — TODAY

A well-presented two bedroom mid terrace bungalow of approx 552 sq ft, featuring a modern kitchen, refitted bathroom, private rear garden and single garage. Vendor suited

Tucked away in this quiet cul de sac in the heart of Stanpit and just moments from the nature reserve with beautiful walks to the harbour's edge and to the centre of Christchurch.

- Mid terrace bungalow of approximately 552 sqft
- Two bedrooms
- Spacious living room
- Modern kitchen/breakfast room
- Refitted bathroom
- Private, sunny rear garden
- Garage in a nearby block
- Quiet cul de sac location a short walk to Stanpit Marsh
- Gas central heating and uPVC double glazing
- Vendor suited

EPC Rating Band: C

Council Tax Band: D

Freehold

Successful buyers will be required to complete online identity checks provided by Lifetime Legal. The cost of these checks is £48 inc. VAT per purchase which is paid in advance, directly to Lifetime Legal. This check verifies your identity in line with our obligations as stipulated by our regulatory body, HMRC

