



Wyndham Crescent, TW4

£729,950

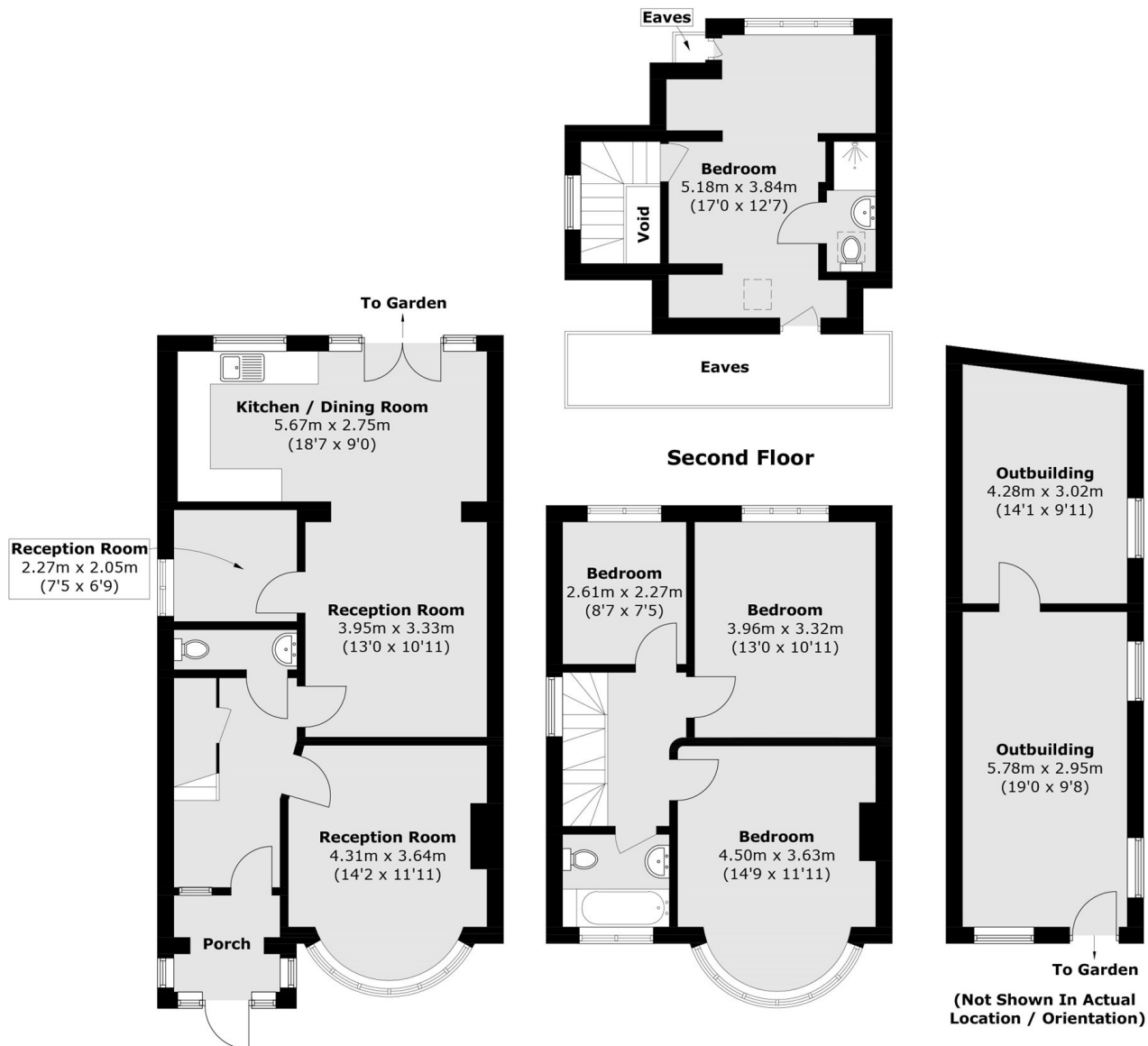
Offered with no onward chain, this fantastic four bedroom semi-detached 1930s house is in excellent condition and is perfect for a growing family. The property also benefits from having off street parking to the front, downstairs W/C as well as further potential to extend at the rear.

Situated off of Hanworth Road, this location offers convenient access in and out of Whitton, Twickenham, Hanworth and Hounslow town centres. There are fast trains from both Whitton and Hounslow Station and various bus routes along the way. With excellent schools in the area this is the perfect house for a growing family.

Features

- Four Bedrooms
- Excellent Condition
- South West Facing Garden
- Downstairs W/C
- Off Street Parking
- No Onward Chain

Wyndham Crescent, Hounslow, TW4



Dexters

Twickenham
84 Heath Road
Twickenham
TW1 4BW
Sales
020 8744 0074

Energy Rating: D. We aim to make our particulars both accurate and reliable. However they are not guaranteed; nor do they form part of an offer or contract. If you require clarification on any points then please contact us, especially if you're traveling some distance to view. Please note that appliances and heating systems have not been tested and therefore no warranties can be given as to their good working order.

RICS Regulated
Estate Agent
and Letting Agent

dexters.co.uk