



Wandsworth Road, SW8 £675,000

A spacious three bedroom, two bathroom split-level apartment situated on Wandsworth Road, offering well balanced accommodation across multiple floors and conveniently located for excellent local amenities and transport links.

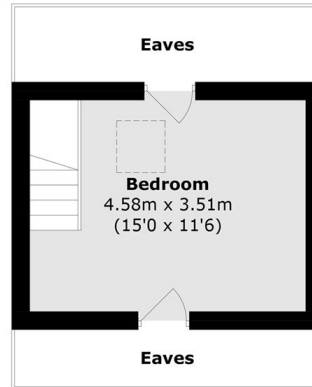
The property currently offers well-proportioned accommodation arranged over several floors. The first floor features a spacious open plan kitchen/reception room, complemented by a contemporary fitted kitchen with granite worktops and a generous family bathroom with useful built in storage. The upper floors comprise two double bedrooms, a separate shower room, and a versatile loft room, providing flexible living space to suit a variety of needs.

Ideally positioned within the thriving Nine Elms regeneration zone, this property enjoys close proximity to the characterful Clapham Old Town, offering an array of highly regarded shops, cafés, bars, and restaurants. Excellent transport connections are provided by nearby Clapham Common Underground Station (Northern Line).

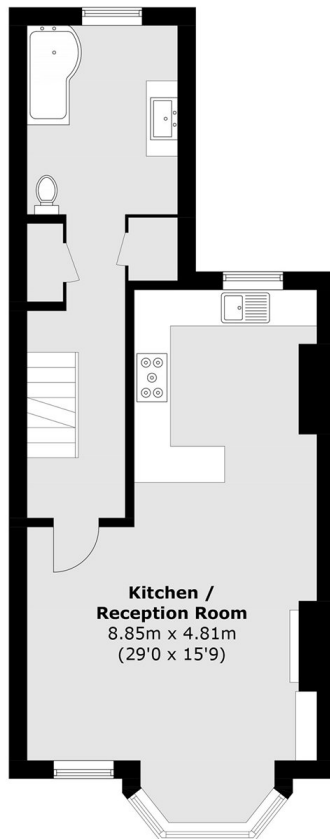
Features

- Top Floor
- Three Bedrooms
- Two Bathrooms
- Loft Room
- Prime Location
- Development Potential (STPP)

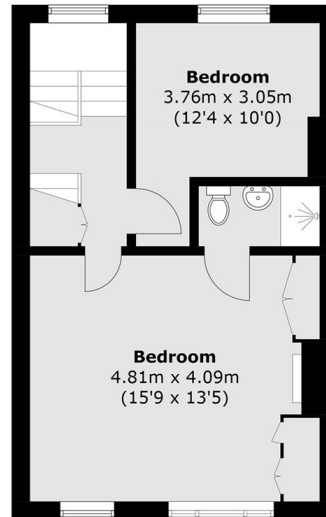
Wandsworth Road,
London, SW8



Third Floor



First Floor



Second Floor

Total area (approx.): 106.5 sq. m (1,146.3 sq. ft)
(Excluding Eaves)