

Jukes & Co

Estate Agents



Whitehorse Lane

, LONDON, SE25 6XB

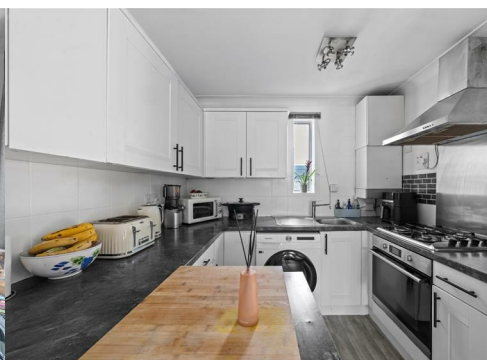
Guide Price £225,000



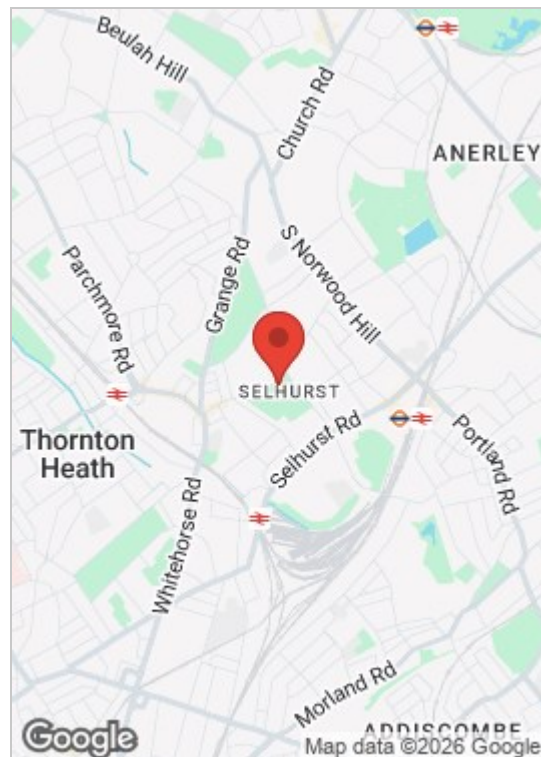
This stunning one-bedroom first-floor purpose-built flat benefits from its own private front door and offers bright, well-proportioned accommodation throughout. The property features a spacious lounge with an open-plan kitchen/dining area, a generous double bedroom, and the added advantage of a garage set back from Whitehorse Lane.

Ideally located, the flat is within walking distance of Thornton Heath, Selhurst, and South Norwood stations, providing excellent transport links into Central London and the surrounding areas. Frequent bus services are available just a few minutes' walk away, offering convenient connections across Croydon and neighbouring districts.

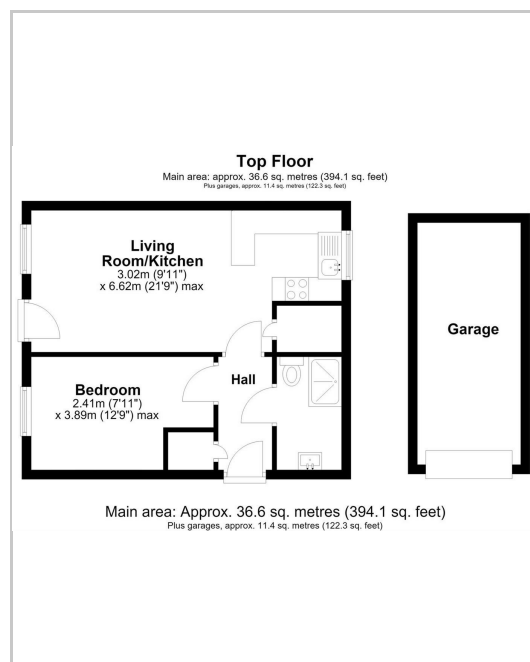
For everyday convenience, a Sainsbury's supermarket is also just a short walk from the property, along with a range of local shops, cafés, and other amenities, making this an ideal home for first-time buyers, commuters, or investors alike.



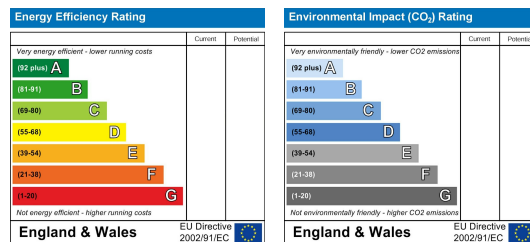
Area Map



Floor Plan



Energy Efficiency Graph



These particulars, whilst believed to be accurate are set out as a general outline only for guidance and do not constitute any part of an offer or contract. Intending purchasers should not rely on them as statements of representation of fact, but must satisfy themselves by inspection or otherwise as to their accuracy. No person in this firm's employment has the authority to make or give any representation or warranty in respect of the property.

Sales and Lettings

76 High Street, South Norwood, London SE25 6EB

T: 020 8653 9393 · F: 020 8771 5551 · E: sales@jukesestateagents.com · E: lettings@jukesestateagents.com

W: jukesestateagents.com