



Hunters Close, Chatteris, Cambs, PE16 6BD

£5000 TOWARDS YOUR MOVING COSTS (ENDS 9TH FEBRUARY 2026) - Close To Local Amenities - Semi Detached House - 3 Bedrooms - Kitchen/Diner & Lounge - Ground Floor WC, First Floor Bathroom & En Suite - Enclosed Rear Garden - Driveway & Garage - No Upward Chain - Call To View (01354) 696700

£240,000



Ground Floor

Entrance Hall

Part double glazed entrance door, radiator, stairs to first floor landing and door to:

WC

Corner wall mounted wash hand basin with tiled splashback, low level WC and radiator.

Lounge

4.50m (14'9") x 3.36m (11')
Double glazed bay window to front, double glazed window to side, built in storage cupboard, fireplace with gas fire inset and radiator.

Kitchen/Dining Room

4.50m (14'9") x 2.52m (8'3")
Fitted with a range of base and eye level units worktop over, stainless steel sink with mixer tap, tiled splashbacks, plumbing for washing machine and slimline dishwasher, space for fridge/freezer, built-in oven, hob with pull out extractor hood over,

radiator and double glazed double doors and window to rear.

First Floor

Landing

Stairs to ground floor, built in airing cupboard and door to:

Bedroom 1

3.43m (11'3") x 3.29m (10'10")
Double glazed window to front, radiator, coving to ceiling and door to:

En-suite

Fitted with pedestal wash hand basin, shower enclosure and low level WC, part tiled walls, radiator and double glazed window to side.

Bedroom 2

2.62m (8'7") x 2.42m (7'11")
Double glazed window to rear and radiator.

Bedroom 3

2.61m (8'7") x 2.04m (6'8")
Double glazed window to side and radiator.

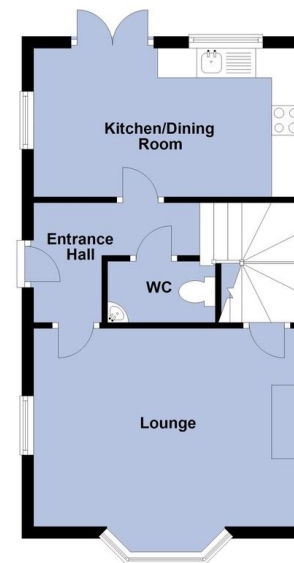
Bathroom

Fitted with panelled bath, pedestal wash hand basin and low level WC, part tiled walls, radiator and double glazed window to side.

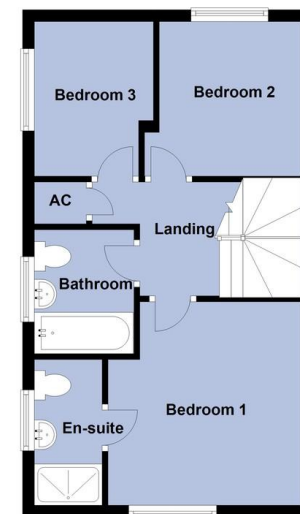
Outside

The front garden is mainly laid to lawn, a driveway to the side leading to a single detached garage with up and over door. Side gate opens in to the enclosed rear garden with paved patio area and the remainder mainly laid to lawn.

Ground Floor



First Floor



Call to arrange a viewing **01354 696700**

T Payne & Co
SALES & LETTINGS

Agents Notes: Whilst every care has been taken to prepare these sales particulars, they are for guidance purposes only. All measurements are approximate and for general guidance purposes only and whilst every care has been taken to ensure their accuracy, they should not be relied upon and potential buyers are advised to recheck the measurements.

