



Goldhurst Terrace NW6

Parkheath
Sold on Service





Goldhurst Terrace, NW6

£875,000

Share of Freehold

- Generously sized two double bedroom apartment
- Set on the first floor of a Victorian period conversion
- 21' bay fronted reception/dining room
- Impressive high ceilings and period features
- 18' principle bedroom and 11' second bedroom with fitted wardrobes
- Basement storage
- Desirable South Hampstead Conservation area
- Conveniently located to Finchley Road underground station (Jubilee & Metropolitan lines, Zone 2), with excellent access to local amenities, cafes, and further transport links
- EPC Rating: D, Council Tax: Camden Band F
- Chain free

Belsize Park/Hampstead
 208 Haverstock Hill
 NW3 2AG
 Sales 020 7431 1234
 Lettings 020 7431 3104
nw3@parkheath.com

South/West Hampstead
 192 West End Lane
 NW6 1SG
 Sales & Lettings
 Tel 020 7794 7111
192@parkheath.com

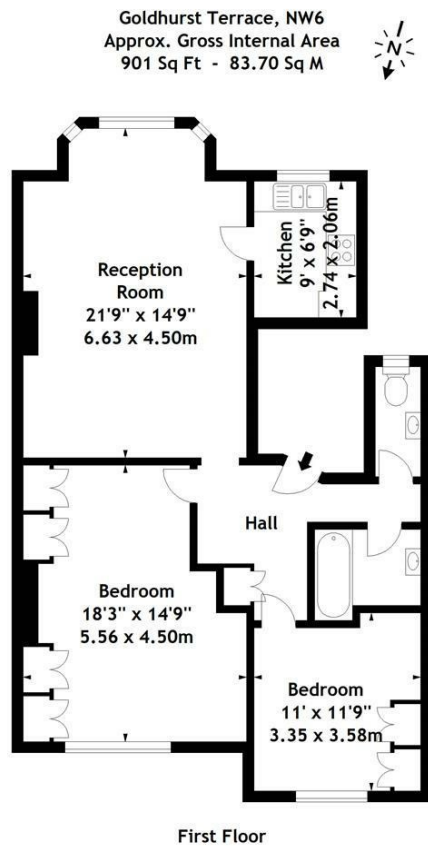
Kensal Rise
 54-56 Chamberlayne Rd
 NW10 3JH
 Tel 020 8960 4845
kensal@parkheath.com

Property Management
 192 West End Lane
 NW6 1SG
 020 7433 6174
pm@parkheath.com

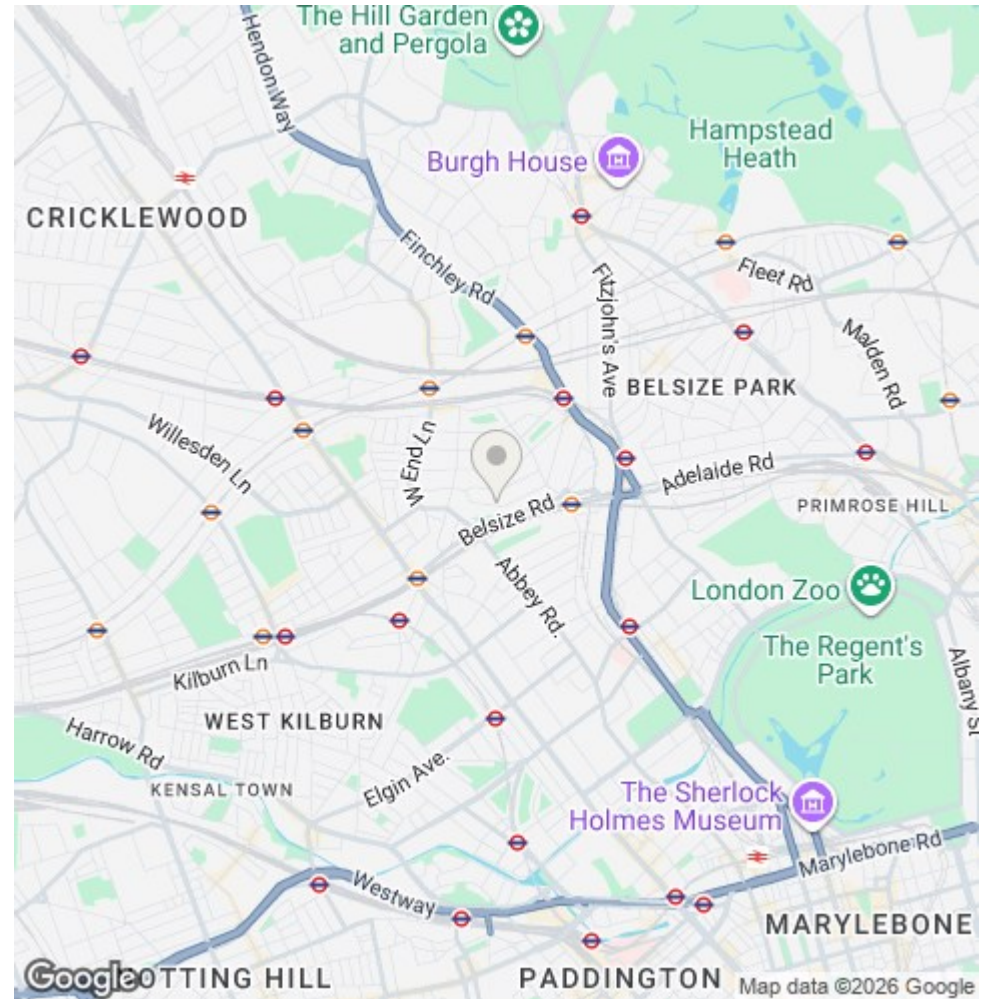
Parkheath
Sold on Service

Camden Tax band F

www.parkheath.com



Measured in accordance with RICS guidelines. Every attempt is made to ensure accuracy, however all measurements are approximate. This floor plan is for illustrative purposes only and is not to scale.
 © Datography Ltd 2015
 Photographs * Floorplans * Virtual Tours
 Tel: 0845 643 4401 www.datography.com



The particulars do not constitute part of an offer or contract. The particulars, including text, photographs and plans, are for the guidance only of prospective purchasers/tenants and must not be relied upon as statements of fact. The descriptions provided therein represent the opinion of the author and whilst given in good faith should not be construed as statements of fact. Nothing in these particulars shall be deemed a statement that the property is in good condition or otherwise or that any services or facilities are in good working order. All measurements are approximate