

first for homes

first for property in life - [firstforhomes.co.uk](https://www.firstforhomes.co.uk)

Contact Allan England's Team

01592 752 944



Rosslyn Court, Kirkcaldy

Offers over £199,995

Rosslyn Court, Kirkcaldy

Stunning 3-Bedroom Mid-Terraced Family Home With Attic Floor & 2 Allocated Parking Bays in a Highly Sought-After Area of Kirkcaldy, Fife

Presented in true move-in condition, this beautifully maintained family home is not to be missed!

First For Homes are delighted to bring to the market this exceptional 3-bedroom mid-terraced family home with attic floor, built by Persimmon Homes in 2022 and located within a desirable residential development in Kirkcaldy, Fife.

Offering bright, spacious, and contemporary accommodation throughout, the property comprises a welcoming entrance hallway, generous lounge, stylish modern kitchen/diner complete with integrated appliances including oven, hob, extractor hood, fridge freezer, and dishwasher, along with a convenient downstairs WC/cloakroom.

The first floor features two well-proportioned double bedrooms and a modern family bathroom. The impressive top-floor master bedroom benefits from fully fitted wardrobes, creating a superb private retreat.

Externally, the property boasts easily maintained front and rear garden grounds with a lovely patio area ideal for outdoor dining and entertaining, and the added benefit of two private allocated parking bays.

Early viewing is highly recommended to fully appreciate the quality, style, and space this stunning home has to offer.

Home Report Value: £210,000

EPC Rating: C

Council Tax Band: D

Don't miss out on this fantastic opportunity!

First for trust... first for service... first for aftercare.

The popular coastal Town of Kirkcaldy has a wide range of services including shopping, banking, schools and a host of recreational facilities such as the stunning Beveridge Park and the Adam Smith Theatre. For the commuter Kirkcaldy boasts a mainline train station and the A92 road link giving access to Edinburgh and all major local towns.





SITUATION - Kirkcaldy

ENTRANCE HALLWAY

LOUNGE

13'3" x 10'0" (approx) (4.06m x 3.05m (approx))

KITCHEN/DINER

13'4" x 11'6" (approx) (4.08m x 3.52m (approx))

CLOAKROOM W/C

STAIRS TO UPPER LEVEL

BEDROOM 2

13'6" x 8'0" (approx) (4.14m x 2.46m (approx))

BEDROOM 3

10'1" x 6'8" (approx) (3.09m x 2.05m (approx))

BATHROOM

6'4" x 6'3" (approx) (1.95m x 1.91m (approx))

STAIRS TO UPPER LEVEL

MASTER BEDROOM

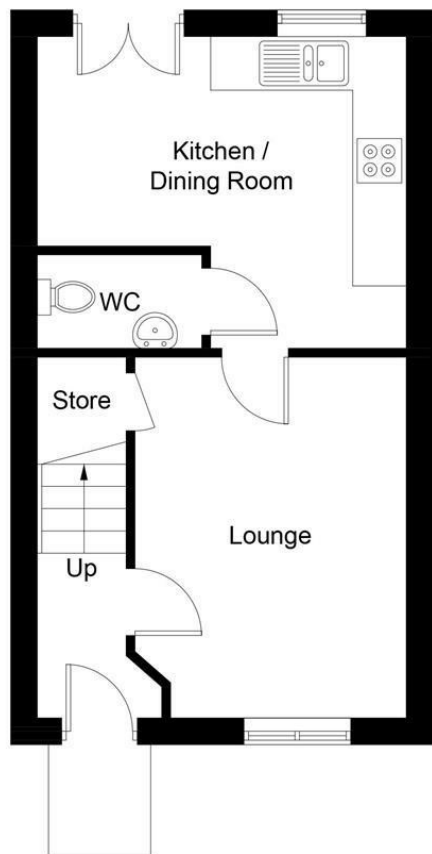
15'5" x 13'3" (approx) (4.71m x 4.05m (approx))

FRONT AND REAR GARDEN GROUNDS

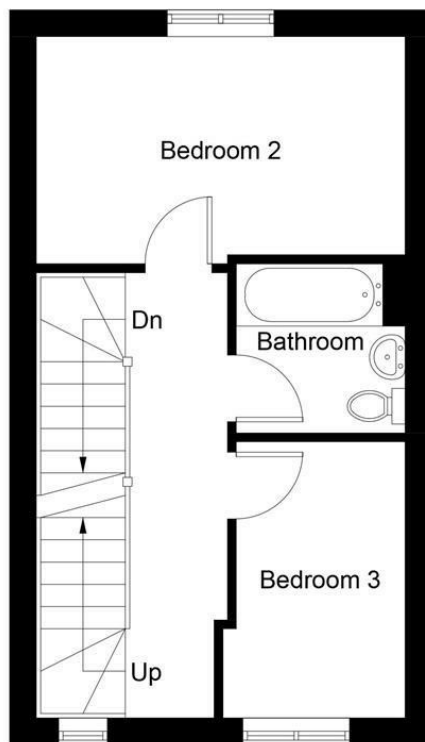
2 ALLOCATED PARKING BAYS TO REAR

INFORMATION






Ground Floor



First Floor

 = Reduced headroom below 1.5m / 5'0



Second Floor

Illustration for identification purposes only, measurements are approximate, not to scale. Fourlabs.co © (ID1305231)

Information

These particulars are prepared on the basis of information provided by our clients. We have not tested the electrical system or any electrical appliances, nor where applicable, any central heating system. All sizes are recorded by electronic tape measurement to give an indicative, approximate size only. Prospective purchasers should make their own enquiries – no warranty is given or implied. This schedule is not intended to, and does not form any contract.

FREE Valuation

Selling Your Home?

Choose first for homes - a highly experienced estate agency team you can trust to sell your home at the highest possible price. Offering fantastic savings on selling fees, with no compromise on service, free professional photography highlighting your home in its best light, first for homes will be your first choice. Contact us today to arrange your appointment.



first for trust



first for service



first for aftercare

first for homes

first for property in life - firstforhomes.co.uk

Contact Allan England's Team

01592 752 944

32 North Street, Glenrothes, Fife KY7 5NA

Fax: 01592 807947

sales@firstforhomes.co.uk

www.firstforhomes.co.uk