

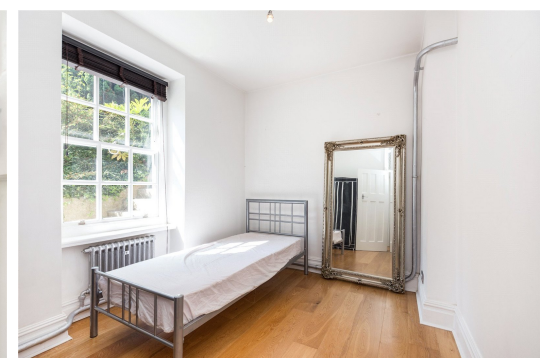


Avenue Lodge

St John's Wood, NW8

£450 per week
(£1,950 pcm)

A modern and spacious apartment set within a well maintained portered building with communal garden in St John's Wood. Heating & hot water included in the rent.



Avenue Lodge

St John's Wood, NW8

- Modern Spacious Apartment in Portered Block
- 2 Bedrooms, 1 Bathroom
- Communal Garden, Heating & Hot Water Included
- Close to St John's Wood & Swiss Cottage

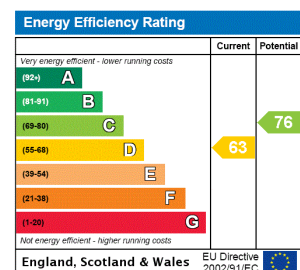


A modern and spacious 2 bedroom apartment set within a well maintained portered building with communal garden in St John's Wood. The property comprises; 2 bedrooms, modern bathroom, modern fully fitted kitchen, large reception room, a plethora of storage throughout, and also benefits from heating & hot water being included in the rent, as well as portorage.

Avenue Lodge is located a short walk away from amenities and transport of St John's Wood & Swiss Cottage.

Tenure: Long Let
Furnished, Part Furnished

Additional tenant charges apply
 Tenancy Agreement Fee: £300
 References per Tenant/Guarantor: £60
 Goodlord fee per Tenant: £6
 Inventory check (approx. £100 – £250 inc. VAT)
chestertons.com/property-to-rent/applicable-fees



Chestertons St John's Wood Lettings

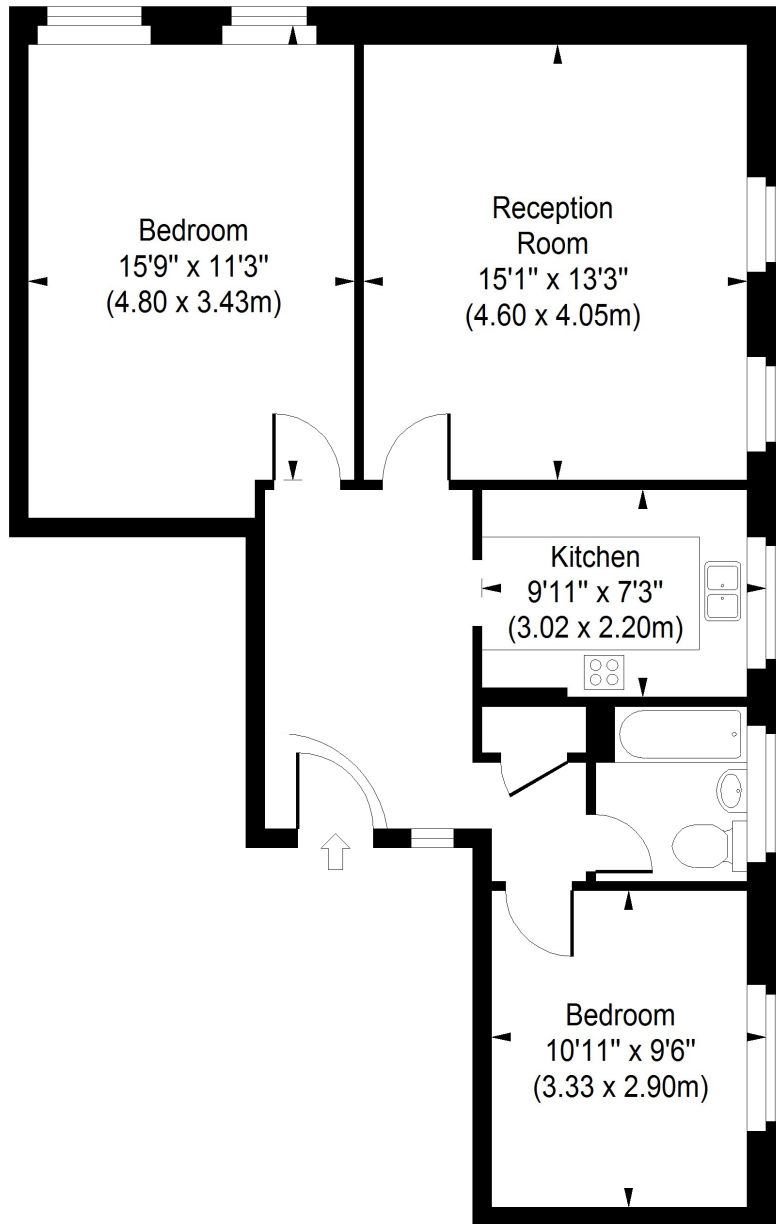
122 St John's Wood High Street
 London
 NW8 7SG
lettings.stjohnswood@chestertons.com
 02030408622
chestertons.com





Avenue Lodge

Approximate Gross Internal Area
725 sq ft / 67.35 sq m



Lower Ground Floor

ILLUSTRATION FOR IDENTIFICATION PURPOSES ONLY

ALL MEASUREMENTS ARE MAXIMUM, AND INCLUDE WINDOW BAYS AND WARDROBES WHERE APPLICABLE
THIS PLAN MUST NOT BE REPRODUCED BY ANY OTHER PERSON WITHOUT PERMISSION