



Brixton Road, Brixton, SW9

1 bedroom flat - conversion for sale

£400,000

Leasehold

Property Details

This characterful one bedroom apartment is set within an attractive Victorian mansion building on Brixton Road, complete with access to a generous residents' garden. Set back from the road and positioned on the uppermost floor, the home enjoys an elevated setting above the buzz of the area. The bedroom is nestled to the rear, enhanced by secondary glazing to promote a restful night's sleep. The interiors are well-proportioned and filled with natural light and charm. A spacious reception and dining room offers defined areas for relaxing and entertaining, with high ceilings, large windows and period proportions. A glazed internal window connects to the kitchen, complemented by a striking blue glass brick feature wall. The kitchen offers ample cabinetry, generous worktop space and room for a breakfast area. The double bedroom benefits from fitted wardrobes, while the bathroom features colourful mosaic tiling and a walk-in shower. Additional benefits include upgraded radiators and secondary glazing throughout.

Features

- One double bedroom
- Victorian mansion building
- Large residents' garden
- Bedroom nestled to the rear with secondary glazing throughout the home
- Characterful and stylish features
- Moments to central Brixton
- Victoria tube station a five-minute stroll away
- Vast array of Brixton's vibrant amenities on the doorstep
- Chain-free

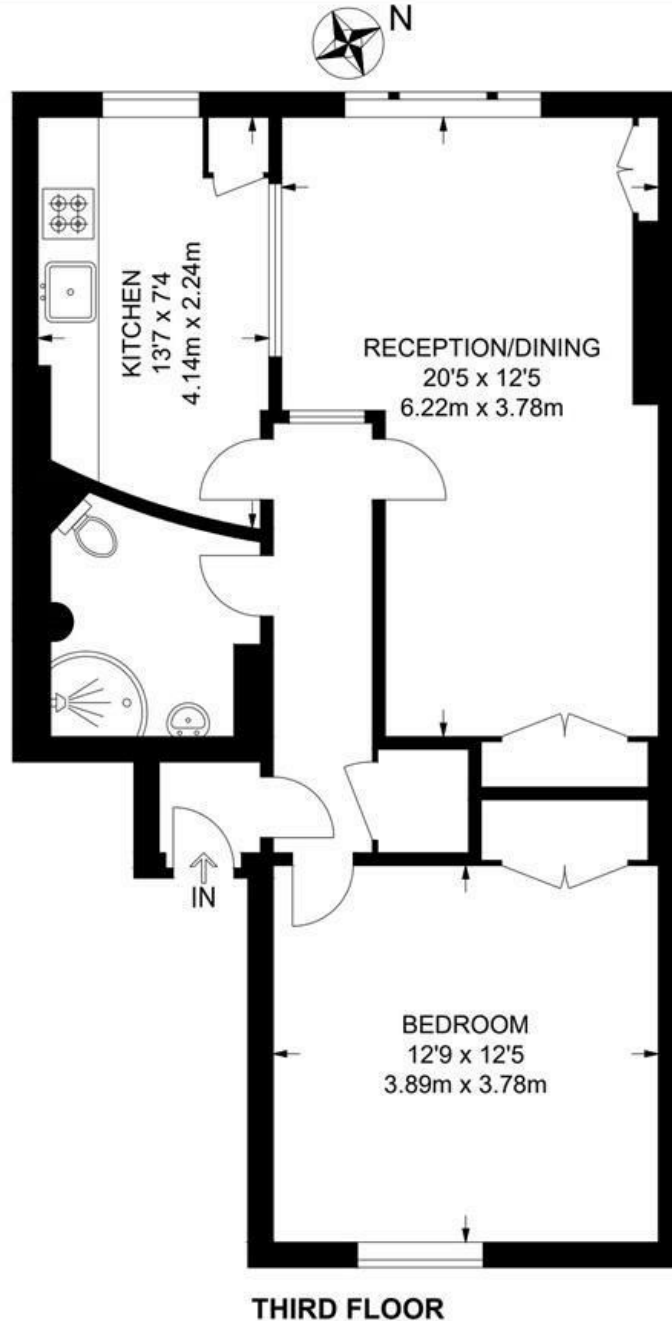
Council tax band B EPC rating D (57)



Brixton Road, Brixton, SW9

Brixton Road, SW9
1 Bedroom Flat

APPROXIMATE GROSS INTERNAL AREA: **643 SQ FT / 59.7 SQ M**



While we try our very best, floor plans are produced as a guide only and we take no responsibility for the precise accuracy with which any property is represented.

Brixton Road, Brixton, SW9

