



## Coval Road, SW14

£5,495 Per calendar month

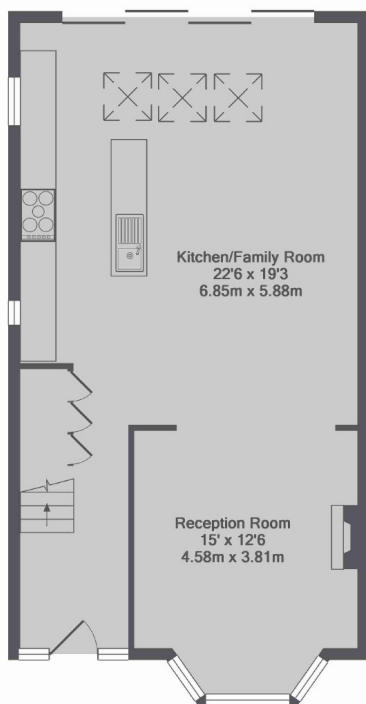
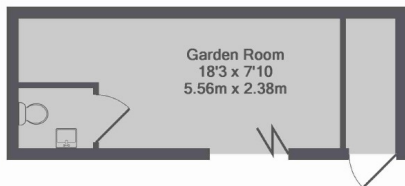
A four/five bedroom house with a contemporary and stylish finish throughout. With a spacious open plan living room, modern kitchen and bi-fold doors onto the garden. Perfect for entertaining and family gatherings.

Coval Road is a quiet residential street close to the shops, cafes and restaurants of East Sheen high street. With Richmond Park gate less than a quarter of a mile, perfect for family bike rides, walks and picnics.

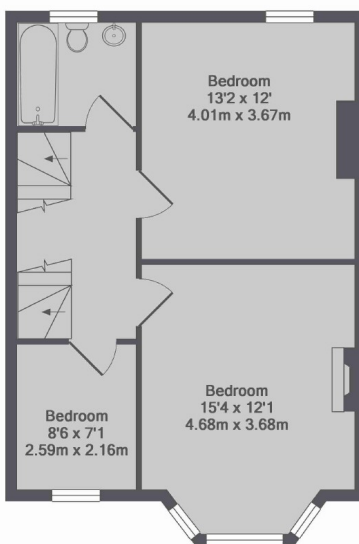
### Features

- Four Double Bedrooms
- Edwardian House
- Modern Kitchen
- Wood Floors Throughout
- Rear Outhouse With Bedroom / Shower Room

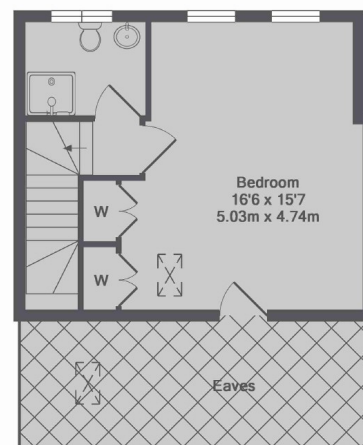
# Coval Road, London, SW14



Ground Floor



1st Floor



2nd Floor

Coval Road, SW14  
Total Approx. Floor Area 1707 Sq.Ft. (158.6 Sq.M.)