



**59 Hendrick Crescent, Shrewsbury, SY2 6JF**

3 bedroom semi-detached house—£269,995 Freehold

# 59 Hendrick Crescent, Shrewsbury, SY2 6JF

Coopergreenpooks.co.uk

£269,995 Freehold—3 bedroom semi-detached house

sales@cgpooks.co.uk

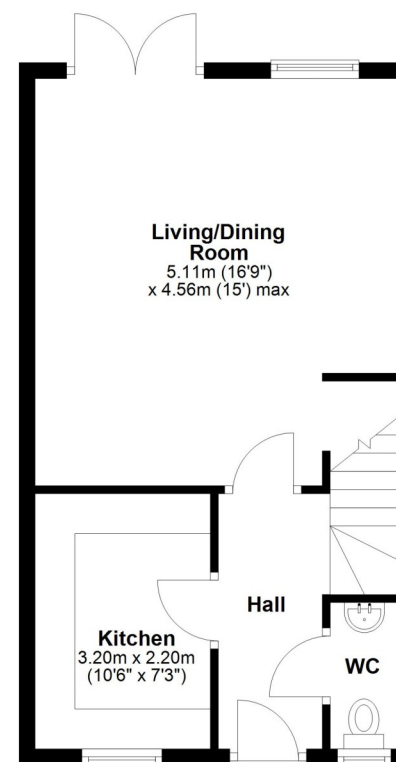
Occupying a fantastic position, quietly tucked away within a popular modern development, this beautifully presented semi-detached house has been significantly improved to provide stylish and thoughtfully designed accommodation, benefitting from a landscaped south facing garden and driveway parking.

## KEY FEATURES

- Entrance hall with cloakroom and turning staircase to landing
- Large open plan living/dining room with glazed double doors onto the garden
- Well-fitted kitchen, complete with integrated appliances
- Master bedroom with built-in wardrobes, additional storage, and en-suite shower room
- Two further bedrooms and a well-appointed family bathroom
- uPVC double glazed windows and gas fired central heating
- Attractively landscaped south facing garden, laid to lawn with paved and decked terraces, useful store, and gated access to side
- Block paved driveway providing parking for at least two cars with cables connected for an EV charger
- This property has been improved from standard, with upgrades including marble tiled flooring throughout the hallway, kitchen, cloakroom, and bathrooms, as well as high quality carpets, tiling and integrated appliances
- A lovely setting at the end of a quiet cul-de-sac, while being just a short distance from an excellent range of amenities, Meole Brace retail park, road links via the bypass and only a couple of miles from the town centre

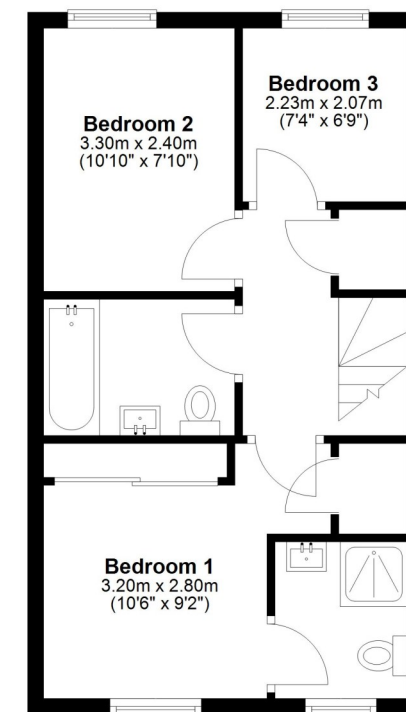
## Ground Floor

Approx. 38.3 sq. metres (412.8 sq. feet)



## First Floor

Approx. 38.3 sq. metres (412.8 sq. feet)



Total area: approx. 76.7 sq. metres (825.5 sq. feet)









# 59 Hendrick Crescent, Shrewsbury, SY2 6JF

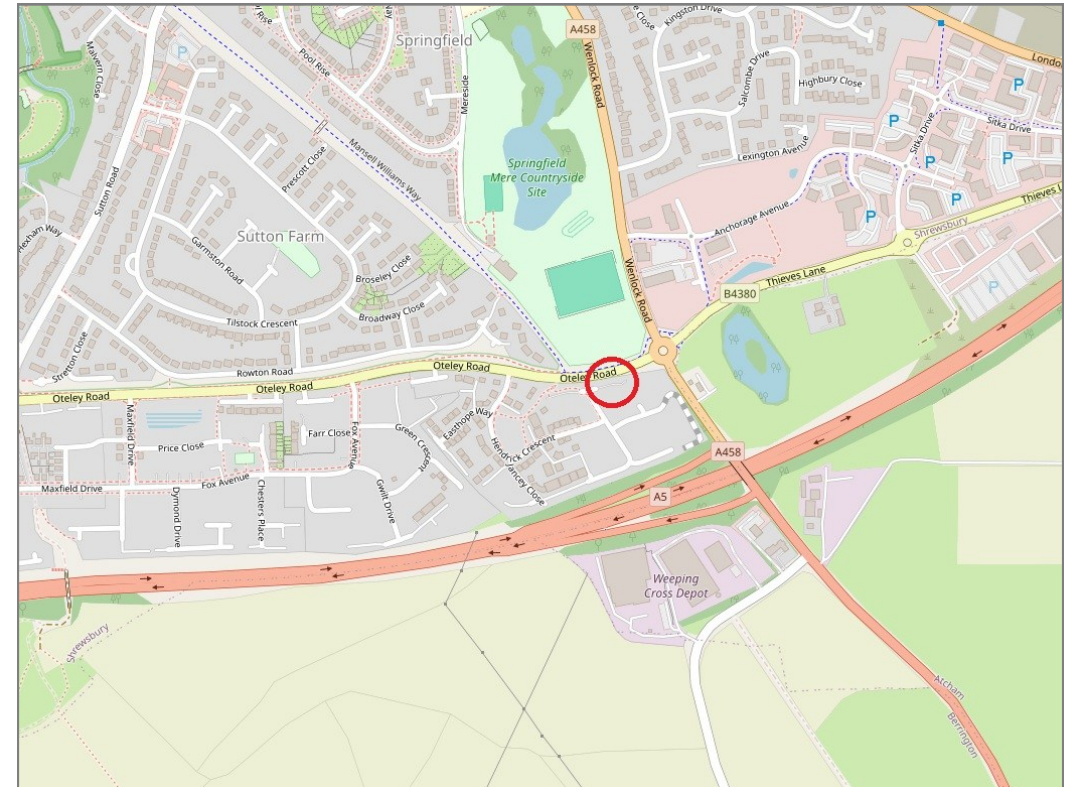
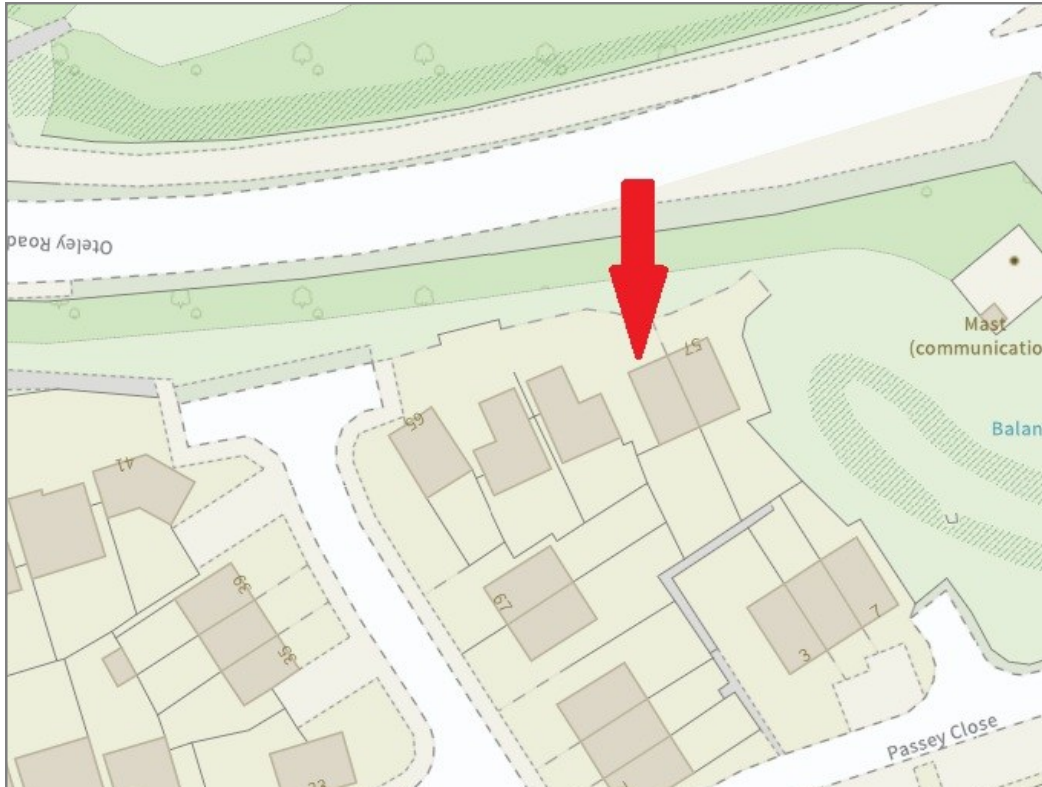
£269,995 Freehold—3 bedroom semi-detached house

sales@cgpooks.co.uk

rightmove 

 OnTheMarket.com

 **RICS**  
Regulated by RICS



**BOUNDARIES NOT CONFIRMED**

Tenure	<b>Freehold</b>
Local Authority	<b>Shropshire Council</b>
Council Tax	<b>Band C</b>
EPC Band	<b>Band B</b>
Services	<b>All mains services are connected</b>

 **Expert mortgage advice available**

3 Barker St, Shrewsbury SY1 1QF

**Cooper Green Pooks**  
**01743 276666**



Your home may be repossessed if you do not keep up repayments on your mortgage.

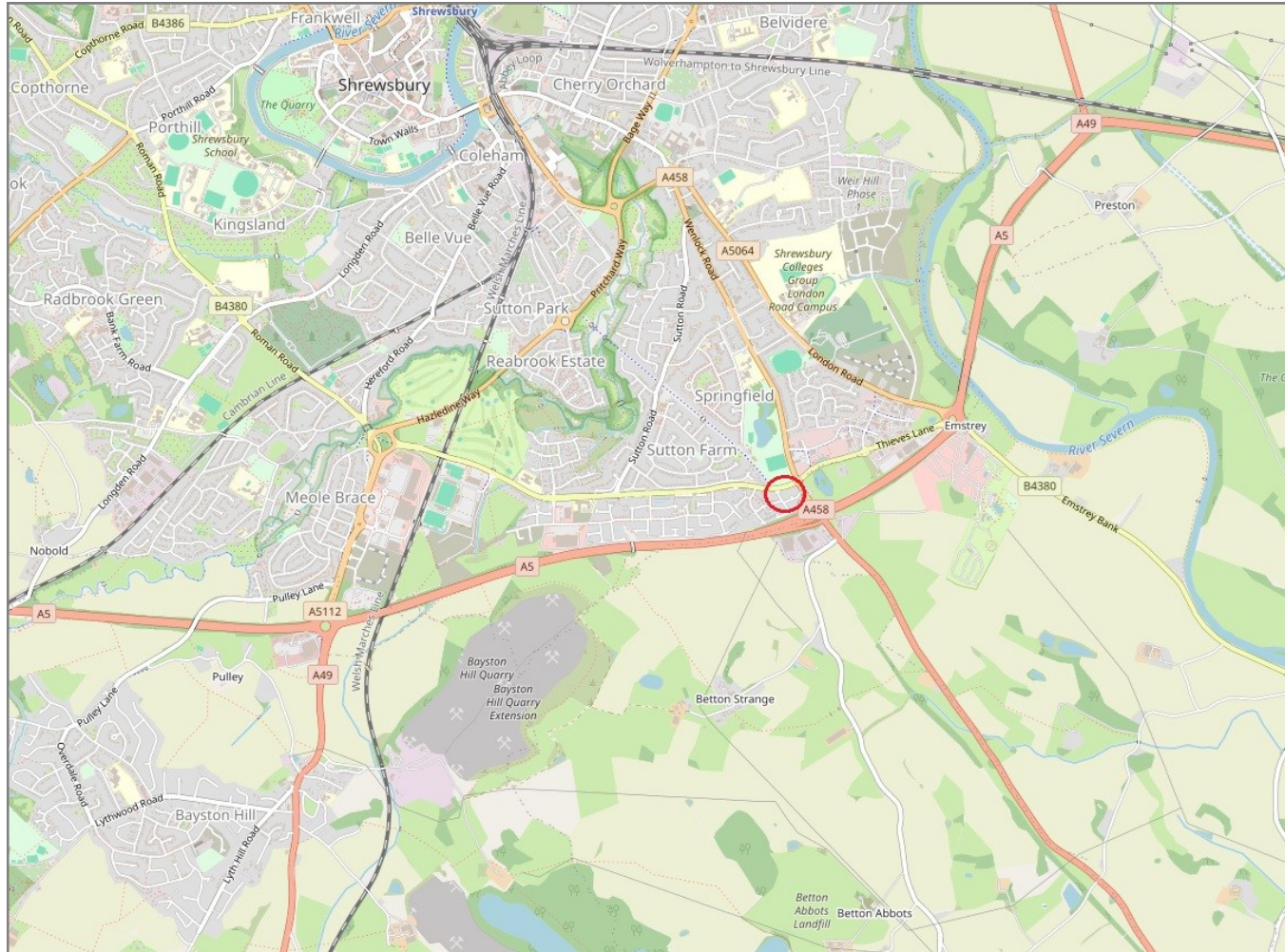
There may be a fee for mortgage advice. The actual amount you pay will depend upon your circumstances. The fee is up to 1% but a typical fee is 0.3% of the amount borrowed.

# 59 Hendrick Crescent, Shrewsbury, SY2 6JF

Coopergreenpooks.co.uk

£269,995 Freehold—3 bedroom semi-detached house

sales@cgpooks.co.uk



**IMPORTANT NOTICE:** Cooper Green Pooks for themselves and for the lessors or vendors of this property whose agents they are give notice that: 1 No appliances, services or service installations have been tested and no warranty as to suitability or serviceability is implied. Any prospective purchaser or lessee is advised to obtain verification from their surveyor or solicitor. 2. The particulars are set out as a general outline only for the guidance of the intended purchasers or lessees and do not constitute, nor constitute part of, an offer or contract. 3. All descriptions, reference to condition and necessary permissions for use and occupation and other details are given in good faith and are believed to be correct but any intending purchasers or lessees should not rely on them as statements or representation of fact but satisfy themselves by inspection or otherwise as to the correctness of each of them. 4. No person in the employment of Cooper Green Pooks has any authority to make or give any representation or warranty whatsoever in relation to this property. 5. All rentals and prices are quoted exclusive of Stamp Duty, legal and surveyors fees and any other associated purchasers or lessees costs. 6. Floor plans are indicative only and should not be relied on. 7. The plan showing the boundary of the property is indicative only and has not been checked against the legal title so should not be relied on. 8. All dimensions, floor areas and site areas are only approximate and should not be relied on. Dimensions are generally maximum room dimension.