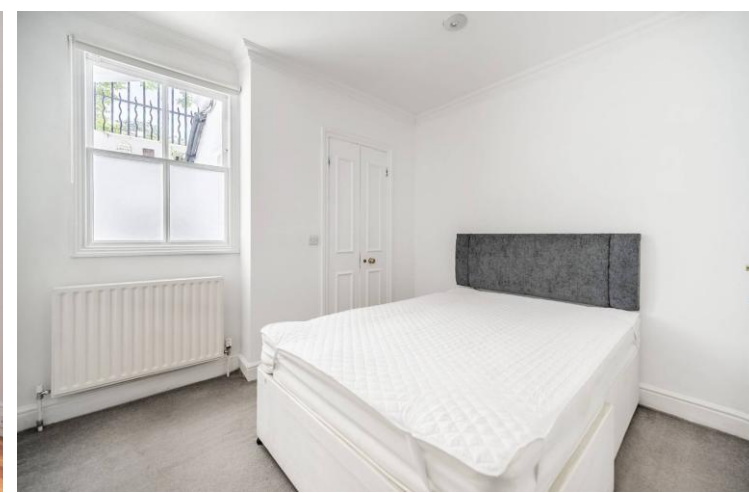




Cranley Gardens  
South Kensington, SW7

CHESTERTONS





A beautifully presented two-bedroom, two-bathroom duplex apartment set within an elegant Victorian red-brick conversion on sought-after Cranley Gardens. Featuring a bright open-plan living space, access to stunning communal gardens

- Spacious duplex apartment arranged over two floors
- Two generous double bedrooms
- Two bathrooms (including en-suite to principal bedroom)
- Bright open-plan reception and modern fitted kitchen

### **£3,500 pcm**

Additional tenant charges apply (fees apply to non-AST tenancies only)

Tenancy Agreement Fee: £300

References per Tenant/Guarantor: £60

Inventory check (approx. £100 – £250 inc. VAT)

[chestertons.co.uk/property-to-rent/applicable-fees](https://www.chestertons.co.uk/property-to-rent/applicable-fees)

**Minimum Term:** 12 months  
**Deposit Required:** £4,038.46  
**Local Authority:** Kensington and Chelsea  
**Council Tax Band:**  
**EPC Rating:** To be confirmed  
**Furnished**

### *Chestertons South Kensington Lettings*

44-48 Old Brompton Road  
South Kensington  
London  
SW7 3DY

[southkensingtonlettingsusers@chestertons.co.uk](mailto:southkensingtonlettingsusers@chestertons.co.uk)  
02075891244

Chesterton UK Services Limited trading as Chestertons for themselves and for the vendor of this property whose agents they are, give notice that (i) these particulars do not constitute any part of an offer or contract, (ii) all statements contained within these particulars are made without responsibility on the part of Chestertons or the vendor, (iii) whilst made in good faith, none of the statements contained within these particulars are to be relied upon as a statement or representation of fact, (iv) any intending purchasers must satisfy themselves by inspection or otherwise as to the correctness of each of the statements contained within these particulars, (v) the vendor does not make or give either Chestertons or any person in their employment any authority to make or give representation or warranty whatsoever in relation to this property. Wide angle lenses may be used. ©Copyright Chestertons | Chesterton Global Ltd | Registered Office 5th Floor, The Lantern, 75 Hampstead Road, London, NW1 2PL Registered Company Number 05334580.



This paper is  
100% recyclable