

FREEHOLD



House - Detached (EPC Rating: E)

1 DALRY PLACE, CHAPELHALL, AIRDRIE, ML6 8HS

Offers over

£289,995

FEATURES

- Detached house
- Open-plan kitchen/dining
- Utility room
- Enclosed garden with decking
- 4 bedrooms, master ensuite
- 2 Reception Rooms
- Mono bloc drive & garage
- Hot tub, patio & lawn



**SWEET
HOME**



4 Bedroom House - Detached located in Airdrie

Call us on

01236 677500

sales@sweet-home.co.uk

<https://sweet-home.co.uk/>

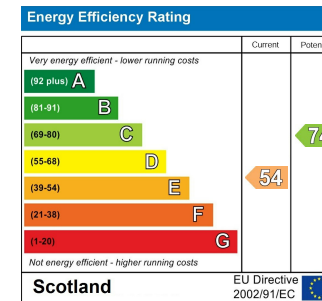
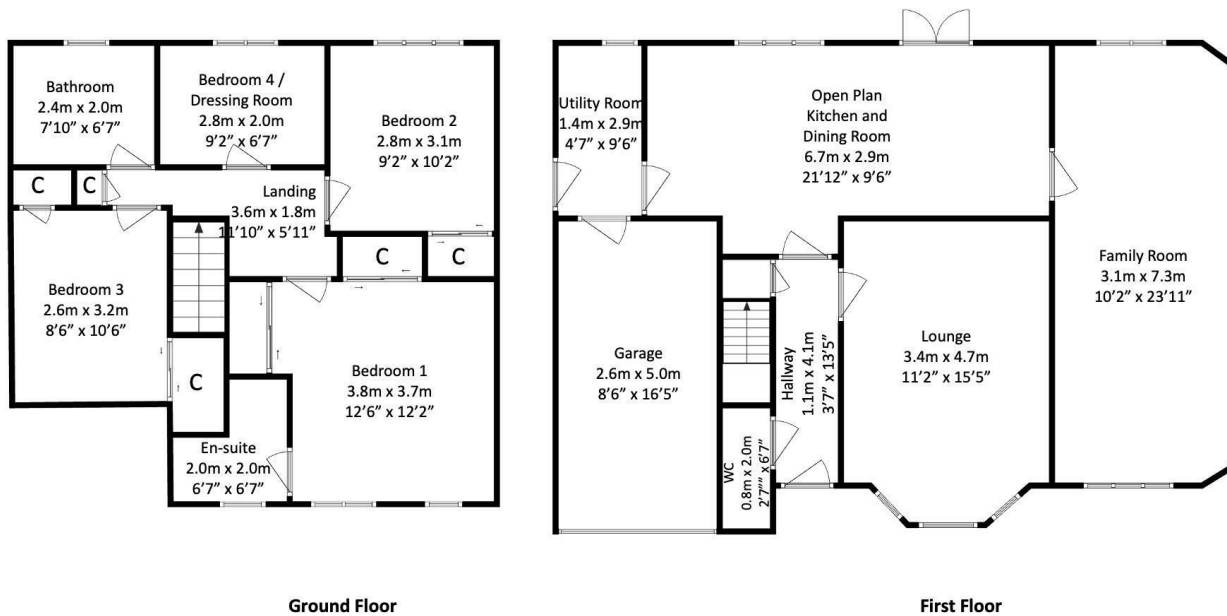
Caroline Morrison of Sweet Home Scotland is proud to bring to market this beautifully extended detached house, in the charming area of Dairy Place, Chapelhall, Airdrie, offering a perfect blend of modern living and family comfort. Spanning an impressive 1,464 square feet, this property boasts four bedrooms, including a master suite with an en-suite bathroom, ensuring ample space for relaxation and privacy.

Upon entering, you are greeted by a welcoming ground floor hall that leads to a well-appointed formal reception room and downstairs WC. While the open-plan kitchen and dining room create an ideal space for entertaining and family gatherings and conveniently lead into the second reception room. The kitchen is complemented by a utility room, and access to the integral garage, enhancing the functionality of the home.

Externally, the property features a mono bloc driveway leading to an integral garage, providing both convenience and additional storage. The front garden is laid to lawn, while the enclosed rear garden is a true highlight. It boasts a delightful decking area, lawn, and a patio, perfect for outdoor dining or simply enjoying the sunshine. For those seeking relaxation, a hot tub awaits, offering a luxurious retreat right at home.

Council Tax Band

F



Agents Note: Whilst every care has been taken to prepare these particulars, they are for guidance purposes only. All measurements are approximate and are for general guidance purposes only and whilst every care has been taken to ensure their accuracy, they should not be relied upon and potential buyers are advised to recheck the measurements.

