



## GRACEFIELD GARDENS, SW16

£550,000

- Two bedrooms
- First floor
- Excellent condition
- Loft extension potential
- Kitchen diner
- Energy rating: C

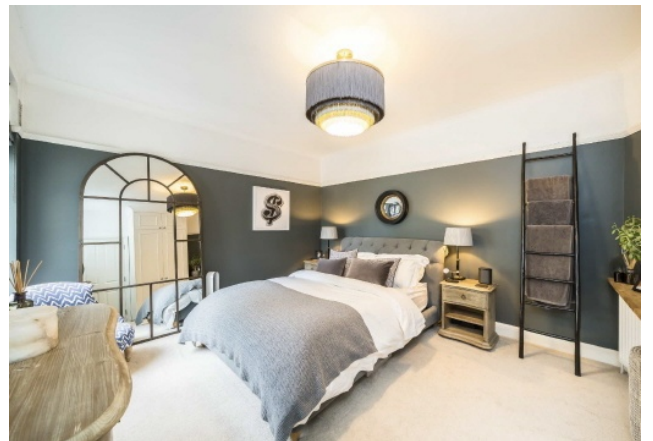




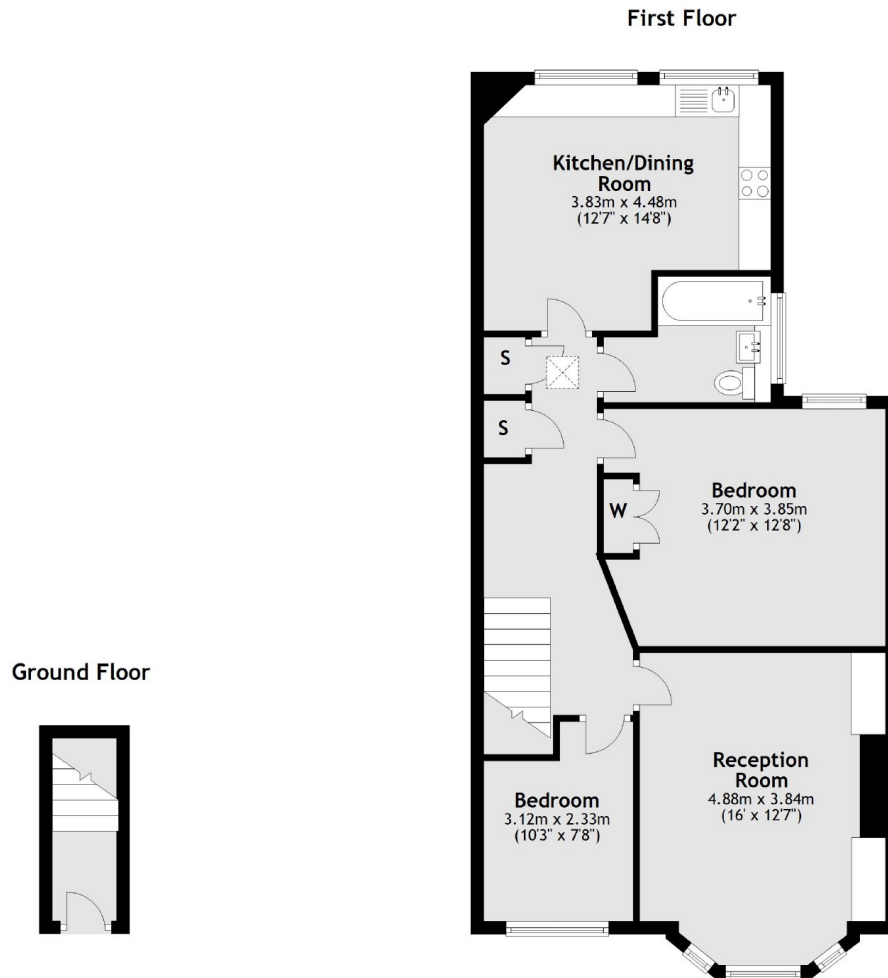
## ABOUT THE HOME

A beautifully presented two bedroom first floor maisonette with substantial storage. This property features a sizeable loft with extension potential for an additional bedroom & bathroom. This property is also perfectly located for access to amenities on the high street and Streatham Hill station.

Gracefield Gardens is perfectly placed for the amenities of Streatham High Road and is within easy reach of Streatham Hill mainline station providing rail links to London Victoria via Clapham Junction. The shops, bars and restaurants of the high road and the wide expanses of Tooting Common are all within close proximity.







Total area: approx. 77.1 sq. metres (830.1 sq. feet)

### JACKSONS STREATHAM

1-3 De Montfort Parade,  
Streatham High Road,  
Sales: 020 8487 3179  
Lettings: 020 8487 3180

Energy Rating: C We aim to make our particulars both accurate and reliable. However they are not guaranteed; nor do they form part of an offer or contract. If you require clarification on any points then please contact us, especially if you're traveling some distance to view. Please note that appliances and heating systems have not been tested and therefore no warranties can be given as to their good working order.