

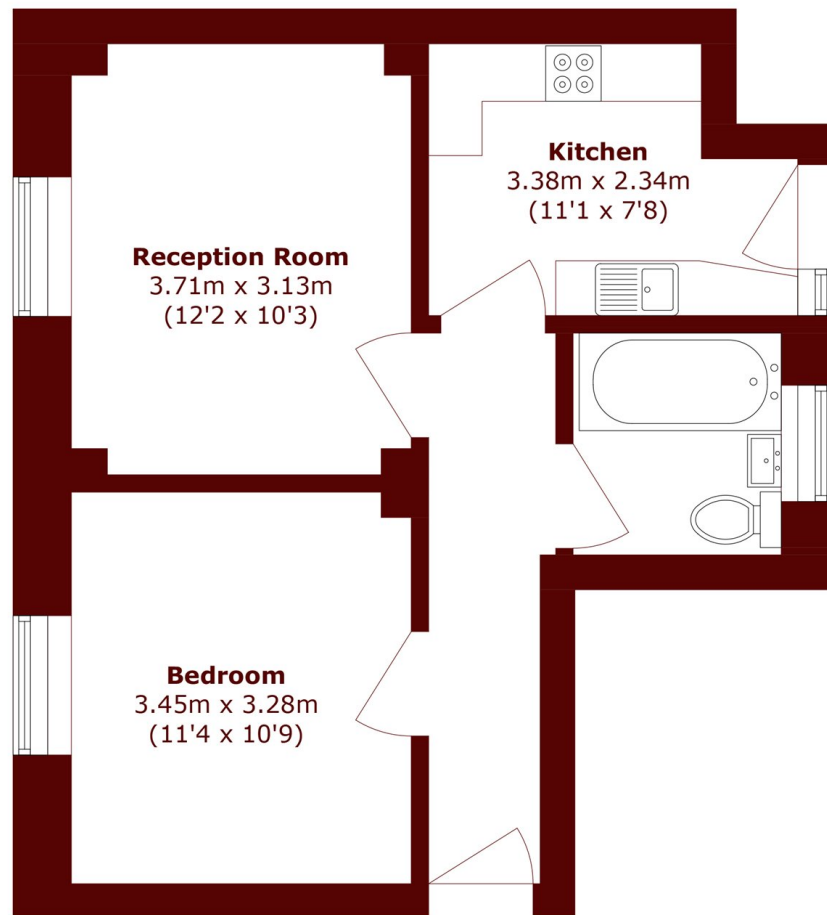


## Hatherley Grove, W2

£465 per week (£2,015 pcm)



- West-Facing
- Top Floor (with lift)
- Double Bedroom
- Wooden Floors
- Family Bathroom
- Separate Kitchen



## Sixth Floor

Total area (approx.): 39.6 sq. m (426.2 sq. ft)

### Marsh & Parsons Notting Hill

2-6 Kensington Park Road,  
London, W11 3BU  
020 7313 2890