



# Harley Street

London, W1G

£7,995 per month  
(£1,845 per week)

This elegant four bedroom apartment offers a luxurious blend of modern convenience and classic charm, spread across the third and fourth floors of a prestigious building.

**CHESTERTONS**



# Harley Street

## London, W1G

- Four bedrooms
- Newly refurbished
- Fully Furnished
- Near Regents Park and Marylebone High Street



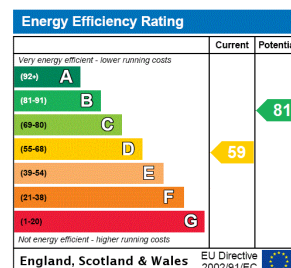


This elegant four bedroom apartment offers a luxurious blend of modern convenience and classic charm, spread across the third and fourth floors of a prestigious building.

Whether you're strolling through the park, exploring the vibrant shops and restaurants of Marylebone High Street, or enjoying the cultural attractions of nearby museums and galleries, this flat offers the epitome of sophisticated city living in one of London's most coveted neighbourhoods.

The apartment is just moments away from Regent's Park, offering residents the opportunity to escape the hustle and bustle of city life

**Minimum Term:** 12 months  
**Deposit Required:** £11,070.00  
**Local Authority:** City Of Westminster  
**Council Tax Band:** G  
**EPC Rating:** C  
**Furnished**



### *Chestertons Hyde Park & Marylebone Lettings*

40 Connaught Street  
 Hyde Park & Marylebone  
 London  
 W2 2AB  
[hydeparklettingsusers@chestertons.co.uk](mailto:hydeparklettingsusers@chestertons.co.uk)  
 02072985950  
[chestertons.co.uk](http://chestertons.co.uk)

Additional tenant charges apply (fees apply to non-AST tenancies only)  
 Tenancy Agreement Fee: £300  
 References per Tenant/Guarantor: £60  
 Inventory check (approx. £100 – £250 inc. VAT)  
[chestertons.co.uk/property-to-rent/applicable-fees](http://chestertons.co.uk/property-to-rent/applicable-fees)

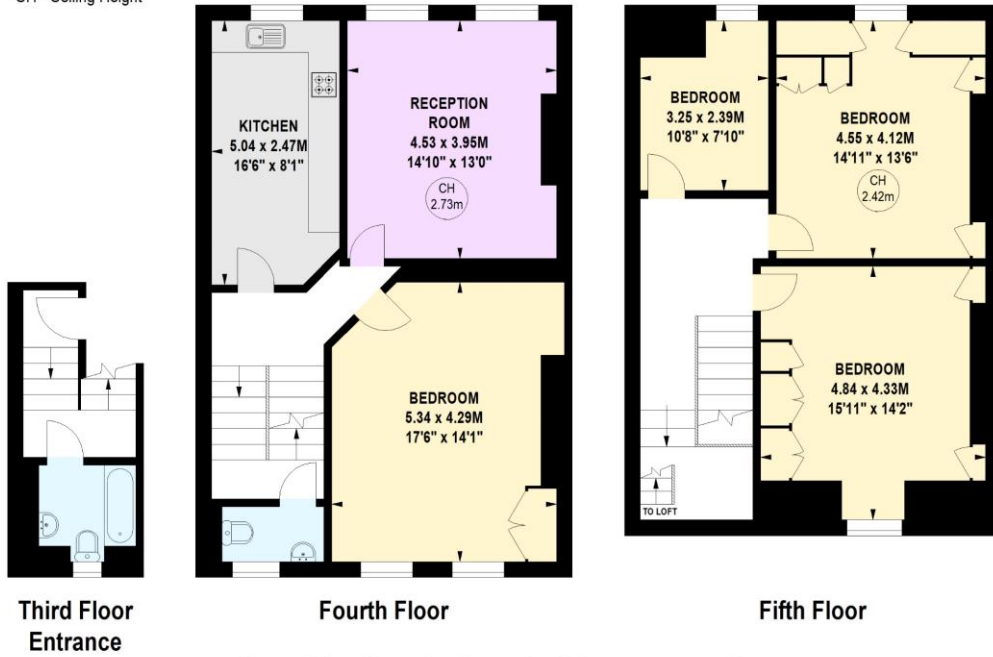
# Harley Street, W1

Approximate gross internal area

137.12 sq m / 1476 sq ft



Key :  
CH - Ceiling Height



Not to scale, for guidance only and must not be relied upon as a statement of fact.  
All measurements and areas are approximate only

