

# Frank Harris & Co.



**Bunyan Court, Barbican, EC2Y**

**£500,000**

A very bright south facing 2nd floor one bedroom flat (type F2C). The flat has an open-plan kitchen with the original features, including the stainless steel worktop and built-in hob.



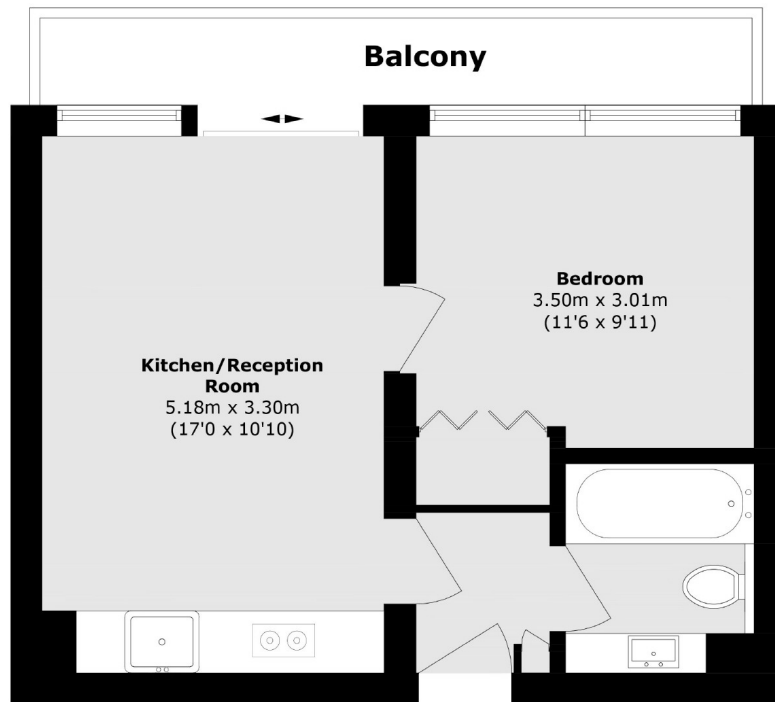
Situated on the northern side of the estate, the full-height windows face directly south over the beautiful Beech Gardens, providing a picturesque view with bits of Barbican and the city skyline. The separate bathroom has been preserved in original condition.

Bunyan Court ideally located for access to Barbican tube station as well as the Farringdon Elizabeth line station. Residents have convenient access to the Hammersmith & City, Metropolitan and Circle lines.

- One Bed F2C • 2nd Floor • South Facing •
- Original Kitchen & Bathroom • Extended Lease • No Onward Chain •



# Frank Harris & Co.



Total area (approx.): 35.5 sq. m (382.1 sq. ft)

Balcony area (approx.): 5.7 sq. m (61.3 sq. ft)

Frank Harris & Co. Barbican and City  
87 Long Lane, London,  
EC1A 9ET  
020 7600 7000  
citysales@frankharris.co.uk

Energy Rating: D. We aim to make our particulars both accurate and reliable. However they are not guaranteed; nor do they form part of an offer or contract. If you require clarification on any points then please contact us, especially if you're traveling some distance to view. Please note that appliances and heating systems have not been tested and therefore no warranties can be given as to their good working order.

