

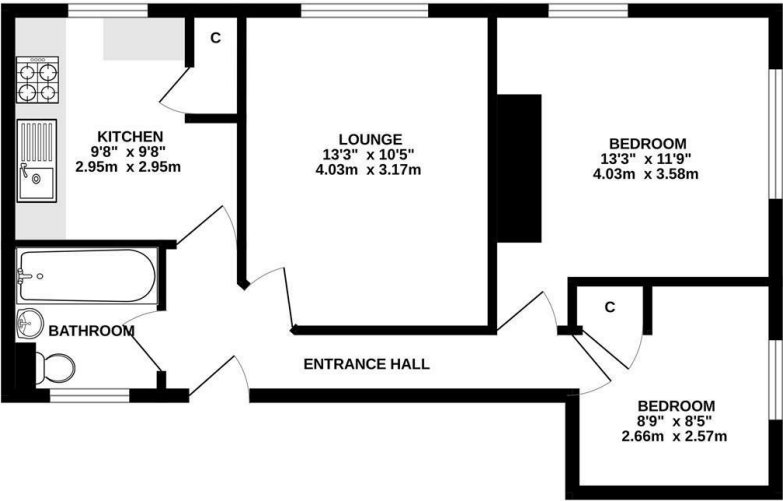


Manchester Road, Ipswich, IP2 9PU

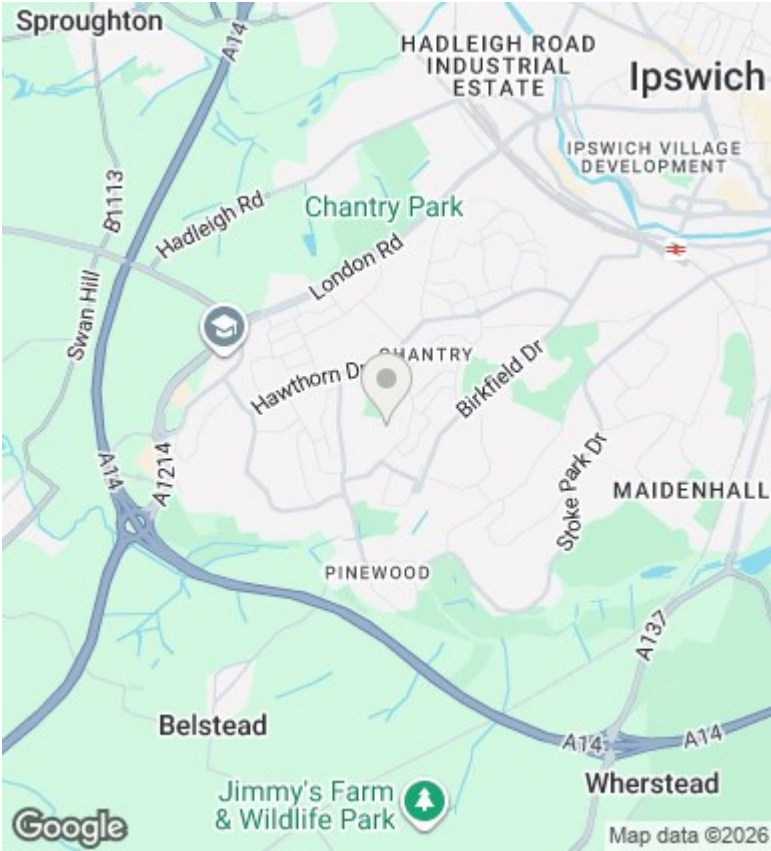
£795

- Unfurnished Two Bedroom First Floor Flat
- Fitted Kitchen
- Double Glazed
- Off Road Parking
- Bathroom
- EPC Rating C
- Entrance Hall
- Gas Central Heating

GROUND FLOOR



Whilst every attempt has been made to ensure the accuracy of the floorplan contained here, measurements of blocks, windows, doors and any other items are approximate and no responsibility is taken for any error, omission or mis-statement. This plan is for illustrative purposes only and should be used as such by any prospective purchaser. The services, systems and appliances shown have not been tested and no guarantee as to their operability or efficiency can be given.  
Made with Metropix ©2025



Directions

Viewings

Viewings by arrangement only. Call 01473 221 399 to make an appointment.

EPC Rating:  
C

