



[www.jeffreygross.co.uk](http://www.jeffreygross.co.uk)

*Cathedral Road*

CARDIFF

VALE

CAERPHILLY

BRISTOL



Comments by Mr Elliott Hooper-Nash



**Property Specialist**  
**Mr Elliott Hooper-Nash**  
 Director

Elliott@jeffreyross.co.uk

**Calverton Rd, Foulcama, CRF**

4th Floor Interior Area 2753.31 sq ft



Comments by the Homeowner





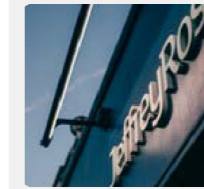
# Cathedral Road

, Cardiff, CF11 9LJ

Per Month

£975 Per Month

 null Bedroom(s)  null Bathroom(s)  sq ft



Contact our  
*Pontcanna Branch*

02920 499680

Beautifully bright and airy 4th floor office space with amazing panoramic views across Bute park and Cardiff castle.

This self contained office comes complete with its own meeting room and kitchen. Located in the recently refurbished 8 Cathedral road which is on the tip of the city centre and close the public transport links.

Price excludes VAT, service charge, and any business rates due





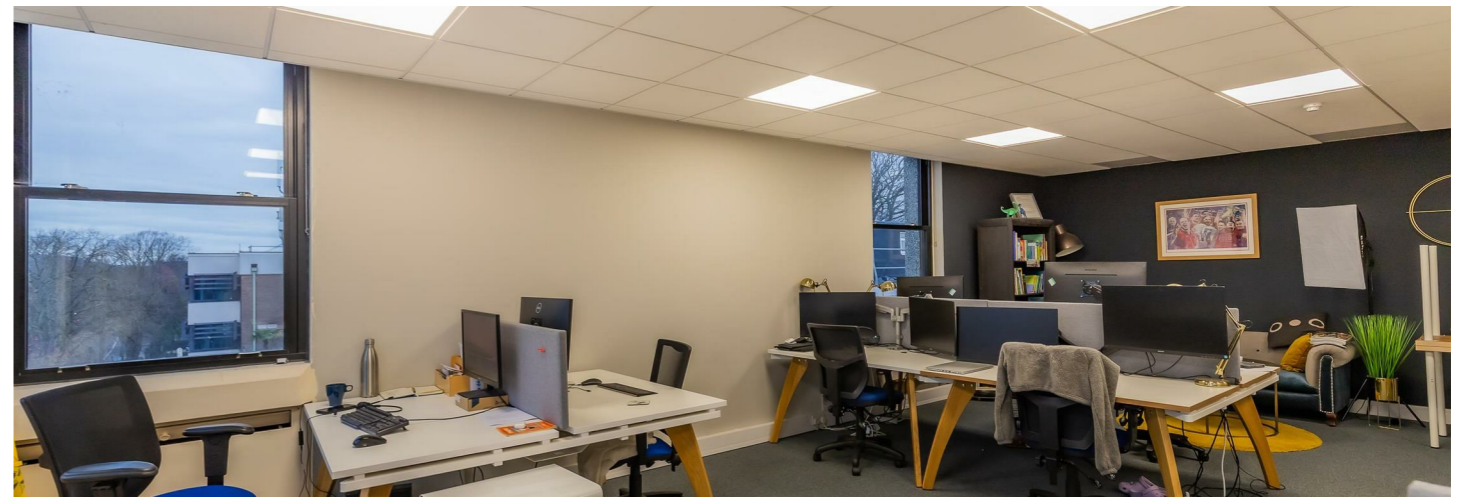
CARDIFF

VALE

CAERPHILLY

BRISTOL

[www.jeffreygross.co.uk](http://www.jeffreygross.co.uk)





Energy Efficiency Rating		Current	Potential
Very energy efficient - lower running costs			
(92 plus) A			
(81-91) B			
(69-80) C			
(55-68) D			
(39-54) E			
(21-38) F			
(1-20) G			
Not energy efficient - higher running costs			
<b>England &amp; Wales</b>		EU Directive 2002/91/EC 