



Sandiway Close, Sandiway, Northwich CW8 2PR

Offers in excess of £425,000

 4
  2
  1
  C



Sandiway Close

Sandiway, Northwich, CW8 2PR

Offers in excess of £425,000



Breakfast Kitchen & Family Area

28'1" x 11'8" (8.58m x 3.58m)

Lounge

17'10" x 12'9" (5.45m x 3.90m)

Hallway

Downstairs WC

Double Garage

22'2" x 11'1" (6.77m x 3.40m)

Landing

Bedroom One

17'10" x 12'10" (5.46m x 3.92m)

En-Suite

9'9" x 7'10" (2.98m x 2.39m)

Bedroom Two

11'9" x 10'0" (3.60m x 3.05m)

Bedroom Three

8'11" x 8'5" (2.73m x 2.57m)

Bedroom Four

8'6" x 8'5" (2.60m x 2.58m)

Family Bathroom

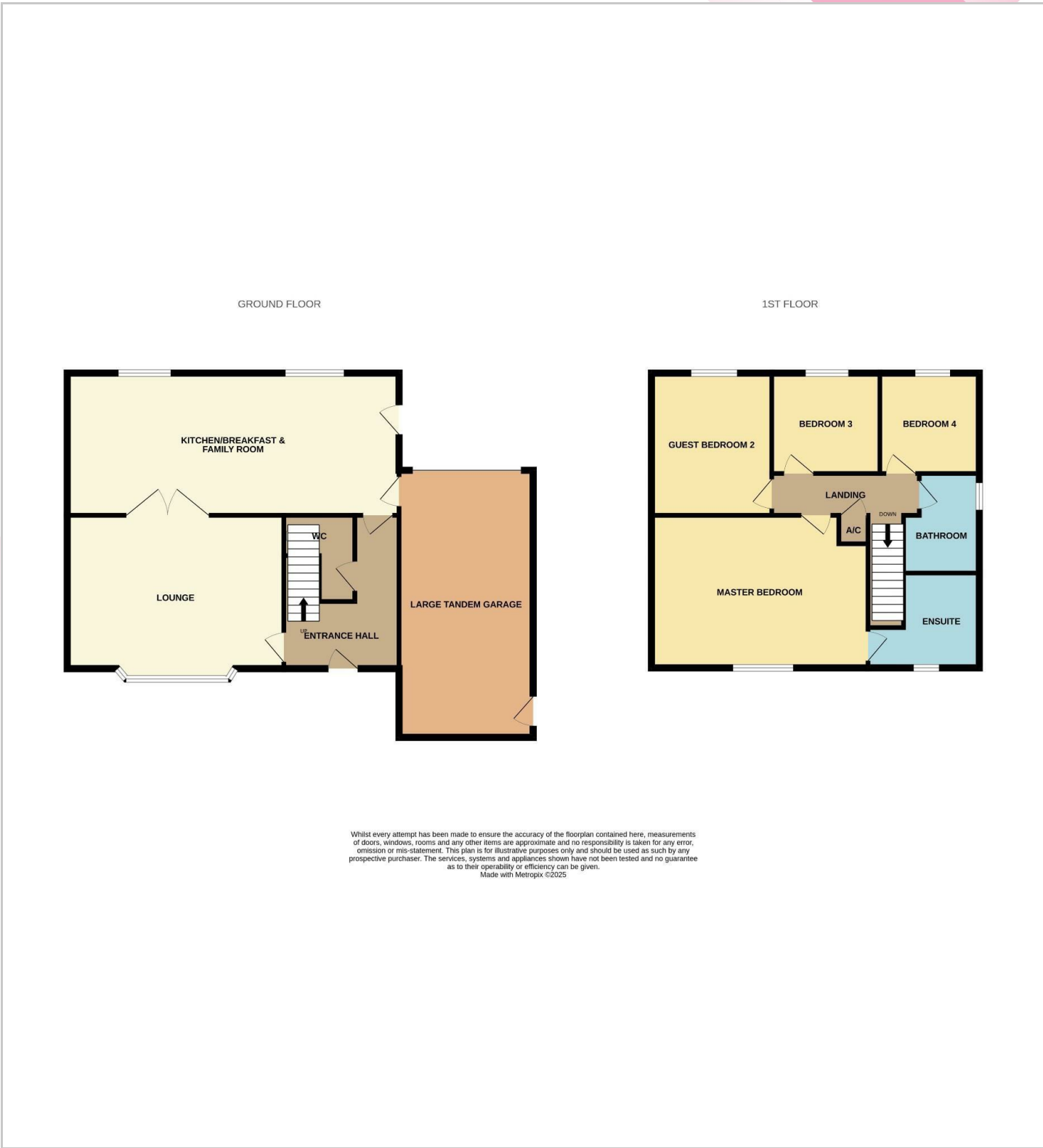
7'11" x 6'4" (2.43m x 1.94m)

Externally

Driveway with turning point at the front, rear garden with paved patio area and mature shrubs and tree's.



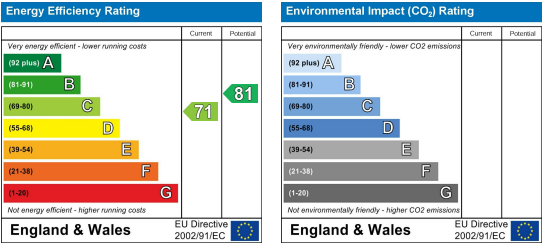
Floor Plan



Viewing

Please contact us on 01606 514 152 if you wish to arrange a viewing appointment for this property or require further information.

Energy Efficiency Graph



These particulars, whilst believed to be accurate are set out as a general outline only for guidance and do not constitute any part of an offer or contract. Intending purchasers should not rely on them as statements of representation of fact, but must satisfy themselves by inspection or otherwise as to their accuracy. No person in this firm's employment has the authority to make or give any representation or warranty in respect of the property.