





£535,000

Located in this highly sought after cul de sac and benefitting from no upper chain. This spacious detached family home boasts a generous south facing rear garden as well as a garage and driveway parking for several cars. With potential to extend subject to the necessary permissions and briefly comprising a large lounge dining room, fitted kitchen, downstairs cloakroom, three generous bedrooms and a family shower room. Located just off High Street Green within walking distance of popular schools for all ages and local shops.

Property Description

Entrance Hall

Double glazed front door, stairs to the first floor, radiator, understairs storage space.

Cloakroom

Comprising a low level WC, wash hand basin, double glazed window.

Lounge/Diner

A dual aspect room with a double glazed sliding doors to the front garden and double glazed sliding doors to the rear garden, two radiators, feature floor to ceiling stone fireplace and surround, TV point.

Kitchen

Fitted with a range of base and eye level storage units, work surface areas with an inset single drainer sink unit with mixer tap, built in electric hob with oven below and extractor over, tiled surrounds, plumbing and space for washing machine, double glazed door and window to the rear garden.

Landing

Stairs to the first floor, access to the loft space, double glazed window to the side.

Bedroom One

Double glazed window to the front, radiator, storage cupboard, built in wardrobes.

Bedroom Two

Double glazed window to the rear, radiator.

Bedroom Three

Double glazed window to the front, radiator.

Shower Room

A three piece suite comprising a low level WC wash hand basin, walk in in shower, tiled surrounds, double glazed window to the rear, radiator.

Outside

Garage

Situated alongside with up and over power and lighting, wall mounted gas boiler, door to the rear garden.

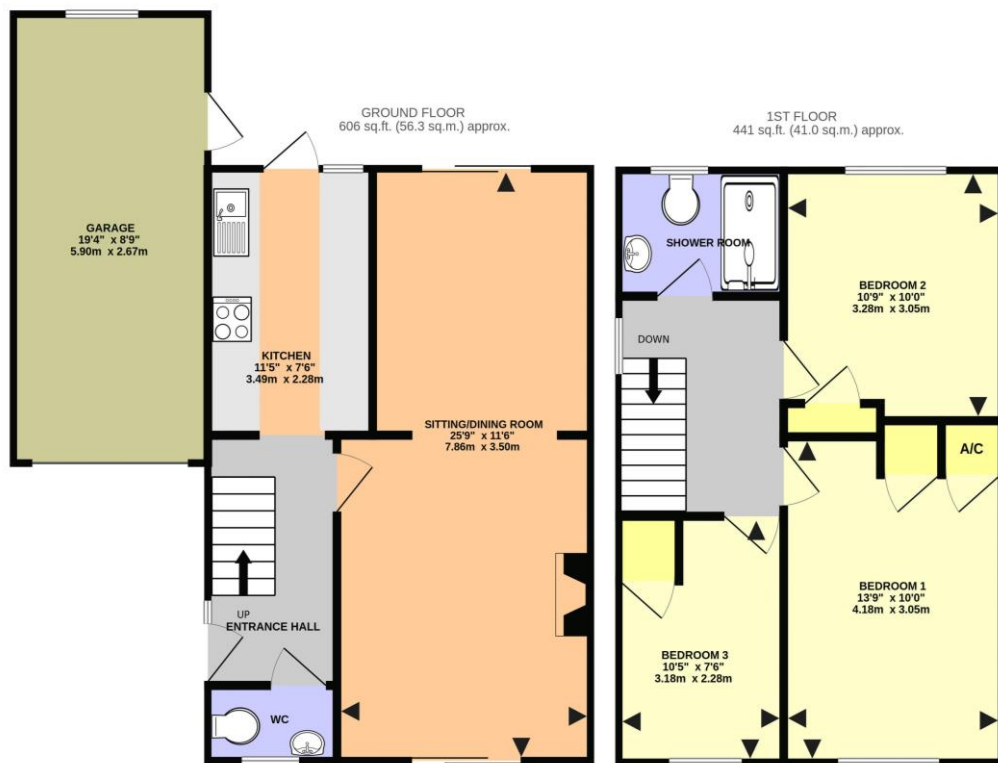
Front Garden

A larger than average front garden laid mainly to lawn with surrounding borders, outside light, block paved driveway providing further off road parking.

Rear Garden

A feature of the property it the fully enclosed southerly facing rear gardens, with a full width paved patio to the immediate rear. laid mainly to lawn with established well stocked surrounding borders, outside light, timber storage shed, gated side access.

COUNCIL TAX BAND: E



BRANKSOME CLOSE, HEMEL HEMPSTEAD HP2 7AG (PRODUCED FOR MICHAEL ANTHONY)

TOTAL FLOOR AREA : 1047 sq.ft. (97.3 sq.m.) approx.
 No accuracy to this image, text or measurements is guaranteed
 Made with Metropix ©2026

Score	Energy rating	Current	Potential
92+	A		
81-91	B		
69-80	C		
55-68	D	58 D	68 D
39-54	E		
21-38	F		
1-20	G		

MONEY LAUNDERING REGULATIONS 2017 intending purchasers will be asked to produce identification and proof of financial status when an offer is received. We would ask for your co-operation in order that there will be no delay in agreeing the sale.

THE CONSUMER PROTECTION REGULATIONS 2008 The Agent has not tested any apparatus, equipment, fixtures and fittings or services and so cannot verify that they are in working order or fit for the purpose. A Buyer is advised to obtain verification from their Solicitor or Surveyor. References to the Tenure of a Property are based on information supplied by the Seller. The Agent has not had sight of the title documents. A Buyer is advised to obtain verification from their Solicitor. You are advised to check the availability of this property before travelling any distance to view. We have taken every precaution to ensure that these details are accurate and not misleading. If there is any point which is of particular importance to you, please contact us and we will provide any information you require. This is advisable, particularly if you intend to travel some distance to view the property. The mention of any appliances and services within these details does not imply that they are in full and efficient working order. These particulars are in draft form awaiting Vendors confirmation of their accuracy. These details must therefore be taken as a guide only and approved details should be requested from the agents