

Portsmouth Road, KT6

£345,000

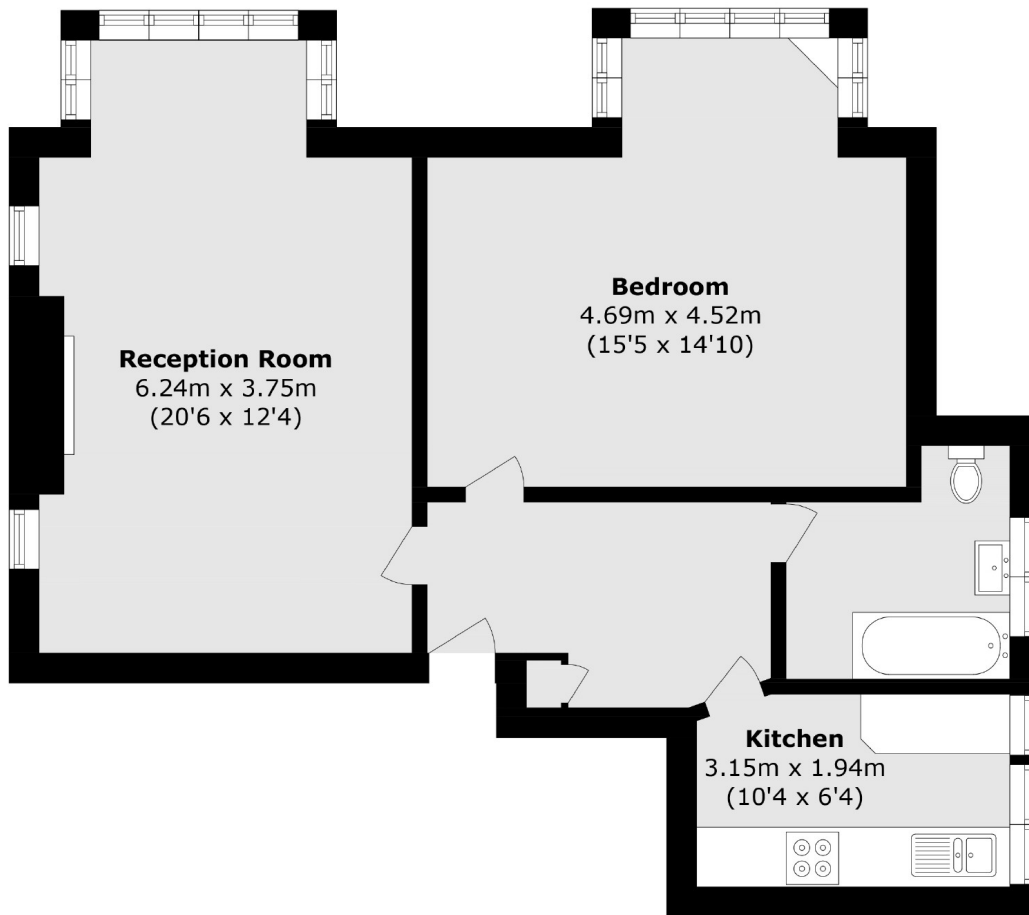
This larger than average apartment is set within an impressive and sought after landmark mansion block. Located on a prestigious river road and with views of the River Thames, the property offers one double bedroom, a spacious reception/dining room, separate kitchen and a three piece bathroom suite. Further benefits include being sold with no onward chain.

Portsmouth Road is one of Surbiton's premier river roads, with the idyllic River Thames running alongside it. Surbiton high street and the mainline train station, with it's fast train to Waterloo in 16 minutes, are approximately half a mile away.

Features

- Riverside Development
- Spacious Apartment
- One Double Bedroom
- No Onward Chain
- Dual Aspect Reception Room
- Long Lease

Portsmouth Road, Surbiton, KT6



Total area (approx.): 59.1 sq. m (636.1 sq. ft)