



jordanfishwick

Ratcliffe Avenue

£2,600 Per Month



Ratcliffe Avenue, Cheadle, SK8 3PF

£2,600 Per Month

VIEWING ESSENTIAL

Forming part of this highly regarded development by Bloor Homes is this beautifully presented and spacious four-bedroom detached home.

Offering generous living accommodation, four double bedrooms, a modern family layout, and a good sized private rear garden, this property is perfect for growing families seeking a well-connected yet peaceful residential setting.

Entrance hall, guest bathroom, lounge with bay window, spacious family room / dining kitchen with gas hob and electric oven, fridge freezer, dishwasher and separate cupboard housing washing machine along with space for dryer and doors to fully enclosed rear garden with patio.

To the first-floor landing with two good sized storage cupboards, four double bedrooms, two with ensuite shower rooms, family bathroom.

Off road parking for 2 cars, single garage, front and rear gardens.

Contact Wilmslow 01625 536300 £2600.00pcm

COUNCIL TAX TBC

EPC B



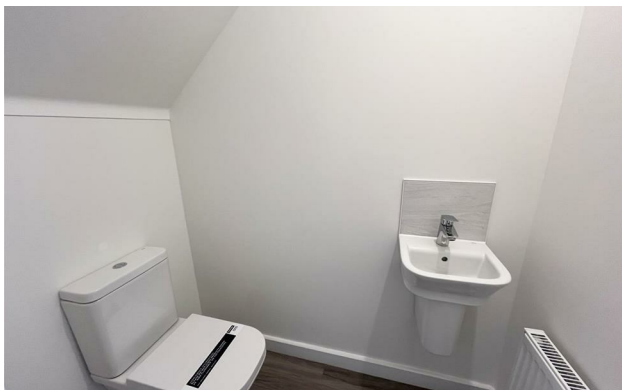
Postcode - SK8 3PF

EPC Rating - B

Floor Area - sq ft

Local Authority - SMBC

Council Tax - New Build





These particulars are believed to be accurate but they are not guaranteed and do not form a contract. Neither Jordan Fishwick nor the vendor or lessor accept any responsibility in respect of these particulars, which are not intended to be statements or representations of fact and any intending purchaser or lessee must satisfy himself by inspection or otherwise as to the correctness of each of the statements contained in these particulars. Any floorplans on this brochure are for illustrative purposes only and are not necessarily to scale.

Offices at: Offices at Chorlton, Didsbury, Disley, Hale, Glossop, Macclesfield, Manchester Deansgate, Manchester Whitworth Street, New Mills, Sale, Wilmslow and Withington

01625 536300