



3 Birchwood, Chineham - RG24 8TY

£270,000 Freehold

Offered to the market chain free • Enclosed rear garden • Off road parking 2 cars • Two-bedroom terraced house • Council Tax Band: C • EPC C



01256 321777



www.thepropertyexplorer.co.uk

the property

explorer

EXPLORER are delighted to launch this well-presented two-bedroom terraced property, offered to the market chain free with allocated off-road parking for two cars. Viewings are highly recommended by the sellers' sole agents.

Council Tax band: C

Tenure: Freehold

EPC Energy Efficiency Rating: C

EPC Environmental Impact Rating: C



- › Offered to the market chain free
- › Enclosed rear garden
- › Off road parking 2 cars
- › Two-bedroom terraced house
- › Council Tax Band: C
- › EPC C

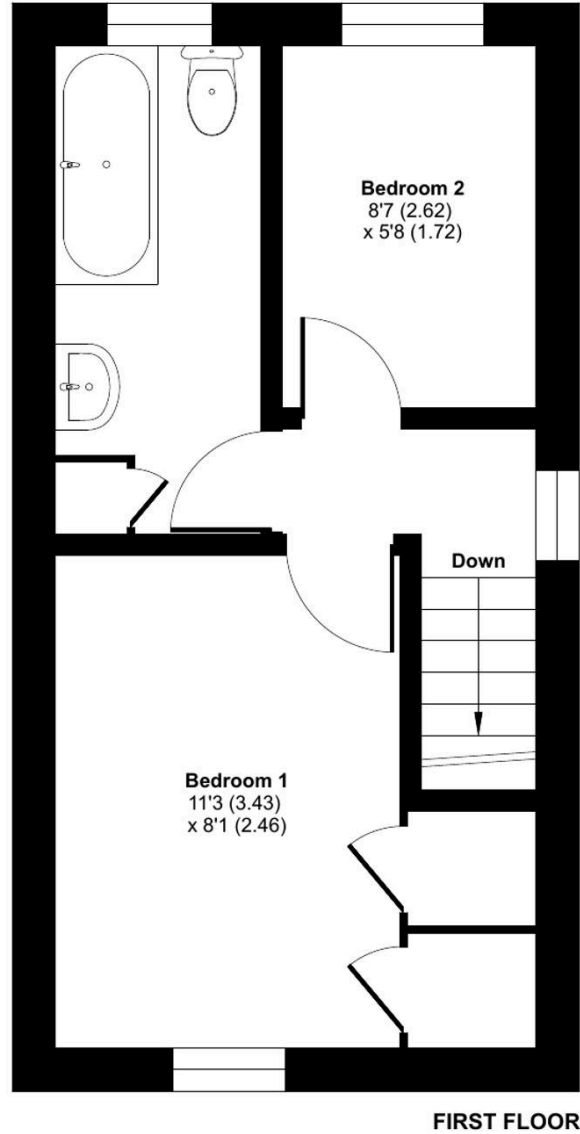
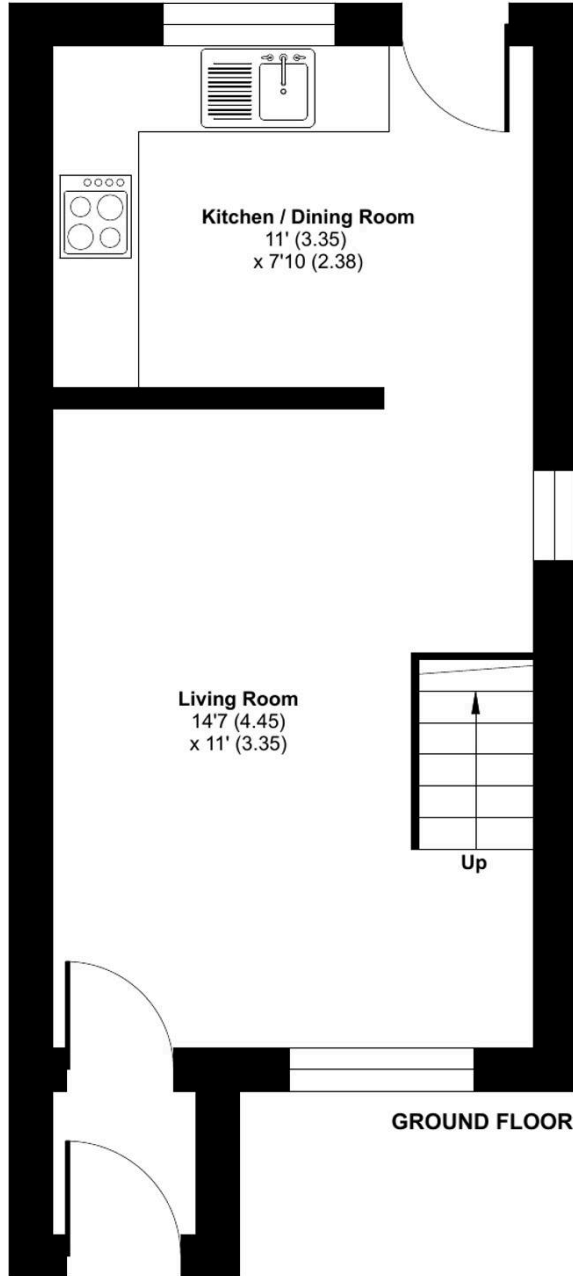




Birchwood, Chineham, Basingstoke, RG24

Approximate Area = 518 sq ft / 48.1 sq m

For identification only - Not to scale



 Floor plan produced in accordance with RICS Property Measurement 2nd Edition, Incorporating International Property Measurement Standards (IPMS2 Residential). © nchecom 2026
Produced for Property Explorer. REF: 1399961

You can include any text here. The text can be modified upon generating your brochure.