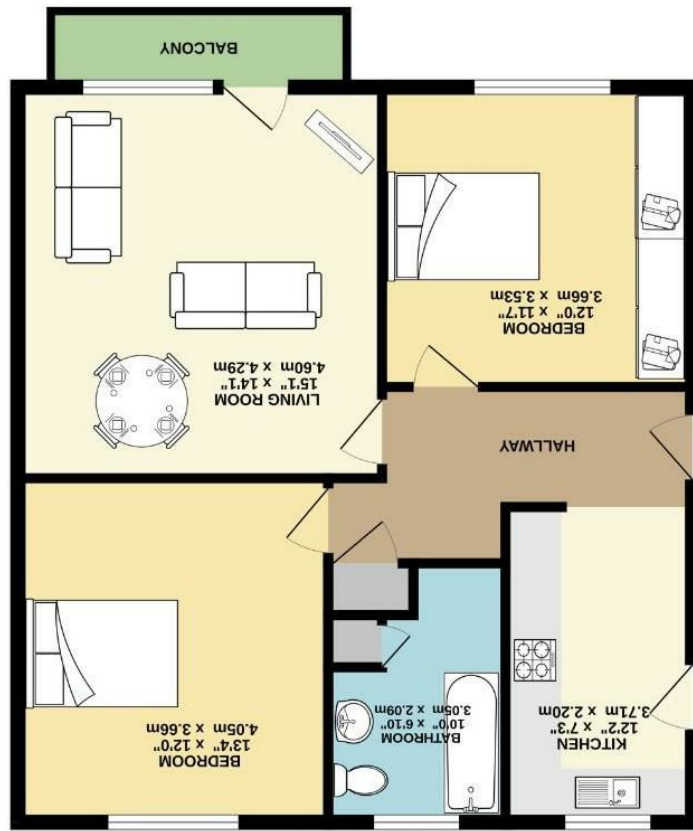


TOTAL FLOOR AREA: 741 sq.ft. (68.8 sq.m.) approx.  
Measurements are approximate. Not to scale. Suitable purposes only.  
Mark with dimensions 0025



SECOND FLOOR  
741 sq.ft. (68.8 sq.m.) approx.





214 Palatine Road, Manchester  
M20 2UF

£215,000

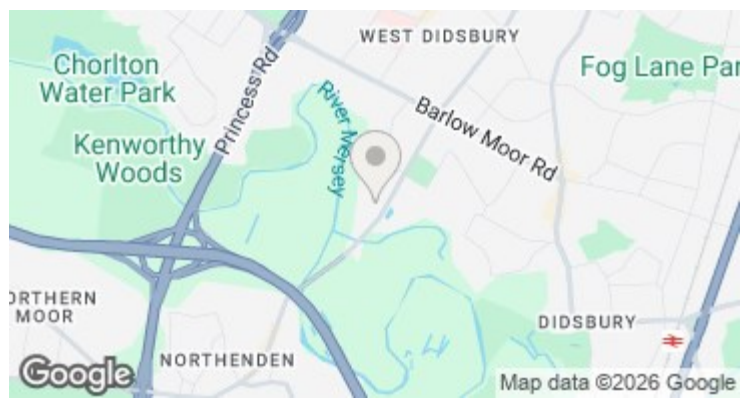


### The Property

A spacious two double bedroom apartment, situated on the top floor with a south westerly facing balcony. In outline the property includes a wide private entrance hall with storage space, a lovely and naturally bright living room with a balcony off, separate kitchen with integrated white goods, two large double bedrooms with the master having fitted wardrobes the full length of the room, fitted bathroom, The development itself has secure gated parking for residents and is in a great location within easy reach of West Didsbury, Didsbury and Northenden Villages. The property also benefits from gas central heating, double glazed windows throughout and can be accessed from either the garden or car park entrances, where the gated and secure parking is. \*NO ONWARD CHAIN\*

### Directions

M20 2UF



- Two double bedrooms
- Top floor apartment
- South-westerly facing balcony
- Large living room
- Separate fitted kitchen
- Gated residents parking

Postcode - M20 2UF

EPC Rating - D

Floor Area - 740.00 sq ft

Local Authority - Manchester City Council

Council Tax - B

