



Uxbridge Road, W5

£625,000

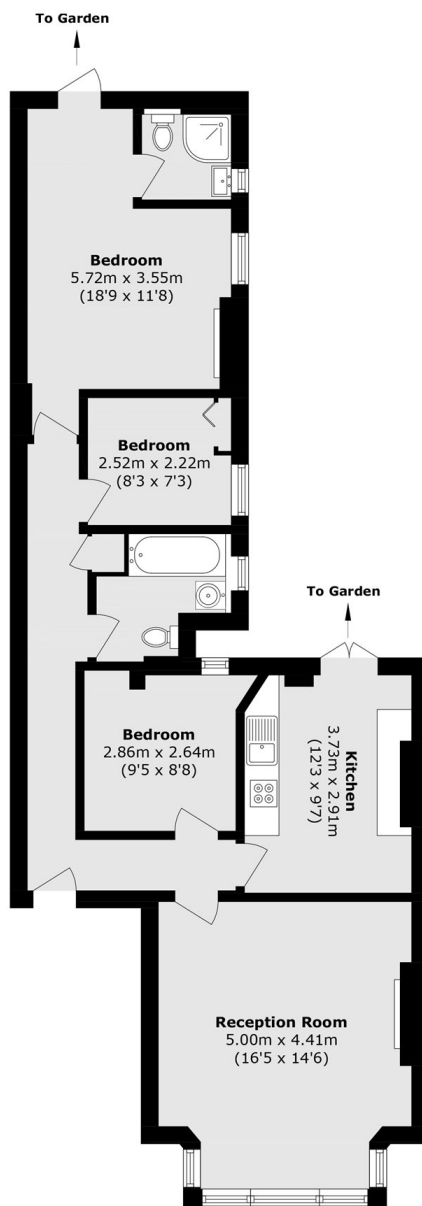
A beautifully presented three-bedroom ground floor mansion block apartment, thoughtfully updated by the current owners while retaining many original period features, including attractive Victorian fireplaces. Offering stylish and well-proportioned accommodation throughout, the property further benefits from a private garden, is offered with no onward chain, and comes with a share of the freehold.

Ideally located adjacent to the open green space of Ealing Common, the property is next to Ealing Common tube station, providing convenient access to the District and Piccadilly lines. Ealing Broadway station is less than a mile away, offering Elizabeth, Central and District line services, as well as National Rail connections.

Features

- Ground Floor
- Three Bedrooms
- Two Bathrooms
- Share Of Freehold
- No Onward Chain
- Private Garden

Uxbridge Road, London, W5



Total area (approx.): 80.6 sq. m (867.6 sq. ft)