

## Banchory Road, SE3

### £385,000

A unique and beautifully bright one-bedroom bungalow offering stylish accommodation throughout, complete with two mezzanine levels.

Situated minutes from Blackheath Royal Standard for its shops, cafés and amenities and within catchment area of three outstanding primary schools and an outstanding secondary school. Transport links are excellent with easy access to Westcombe Park Station, buses to North Greenwich and within close proximity to Greenwich Park.

### Features

- Chain Free
- Detached Bungalow
- Modern Throughout
- Private Garden
- Two Mezzanine Levels
- Open Plan Kitchen/Reception

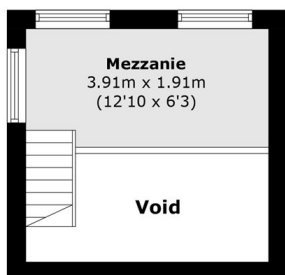


## Banchory Road, SE3

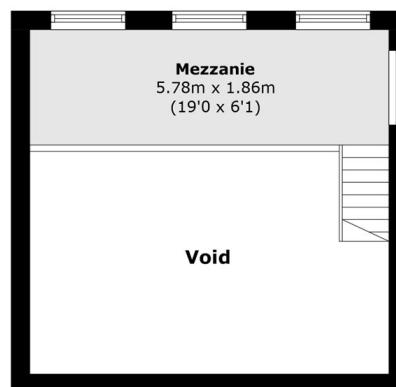
The heart of the home is the open-plan kitchen/reception room with a mezzanine level above and direct access onto a private garden, ideal for relaxing or entertaining. The property is flooded with natural light thanks to the abundance of windows throughout. The main bedroom is a great size and benefits from built-in storage beneath the mezzanine level, while the family bathroom has been finished as a contemporary walk-in wet room shower. Further benefits include planning permission already in place for single-storey extensions on both garden spaces, offering excellent potential to further increase the size of the property. A charming and unique home offering character, light and versatile living space throughout.



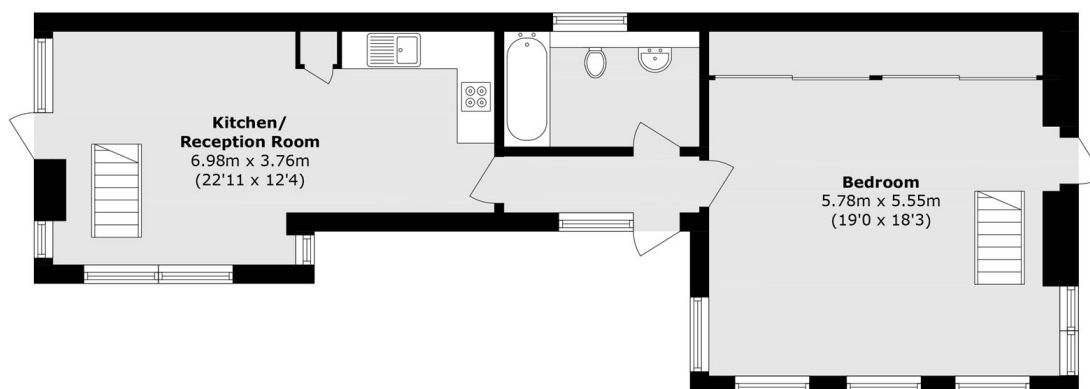
# Banchory Road, London, SE3



**First Floor**



**First Floor**



**Ground Floor**

Total area (approx.): 83.9 sq. m (903.1 sq. ft)  
(Excluding Void)