

# Hans Place, SW1X



A stunning 2 bedroom contemporary apartment on the ground floor of a well maintained period building in this sought after garden square moments from Harrods and the world class shopping on Sloane Street.

1108.00 sq ft | 1 RECEPTION ROOM | 2 BEDROOMS | 2 EN SUITE SHOWER ROOMS | GUEST CLOAKROOM | KITCHEN



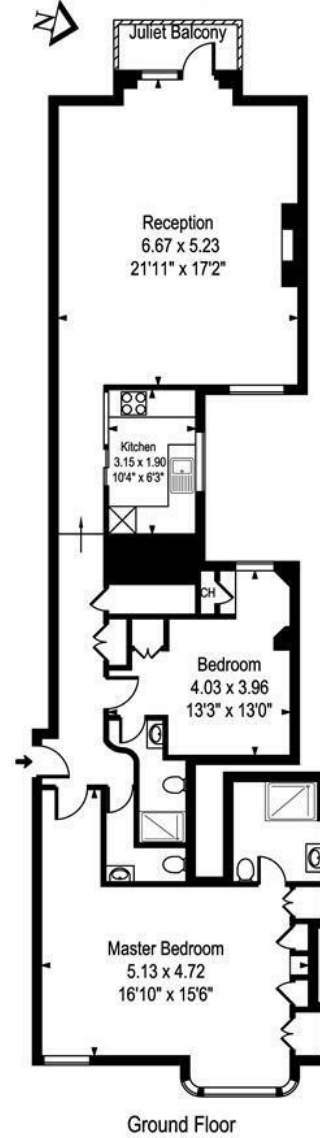
**Guide Price £2,600,000**

**Leasehold**

020 7937 9070  
[www.croftinternational.com](http://www.croftinternational.com)



Hans Place  
2 Bedroom Apartment



Approx Gross Internal Area **1108 Sq Ft - 102.96 Sq M**

Whilst every attempt has been made to ensure the accuracy of the floor plan contained here, measurements of the doors, windows, rooms and any other items are approximate and no responsibility is taken for any error, omission, or mis-statement. This plan is for illustrative purposes only should be used as such by any prospective purchaser.  
The services, systems and appliances shown have not been tested and no guarantee as to their operability or efficiency can be given.

