



FOREST HALL LODGE, FEATHERS HILL

Hatfield Broad Oak, Bishop's Stortford, CM22 7HA

£800,000



COMMERCIAL | RESIDENTIAL | LETTINGS

www.jamesandco.net

- Stunning Location
- Surrounded by Farmland Views
- Beautifully Presented Throughout
- Three Bedrooms plus Two Stunning Bathrooms and a Dressing Room
- Well Stocked Gardens and Ample Parking
- Close to the Heart of this Thriving Village
- One of the most highly regarded Essex Villages
- Open Plan Living with Large Windows





Property Description

THE PROPERTY

STUNNING LOCATION, STUNNING PRESENTATION! This superb three/four bedroom detached lodge is situated within an idyllic location within walking distance to the heart of this desirable and historic village. This would be a special place to call home.

Situated on the cusp of this thriving desirable village with only two properties sharing a driveway.

Freehold
Council Tax Band E
EPC awaiting

THE LOCATION

Situated within a private shared drive as one of only two properties in the highly regarded and historic village of Hatfield Broad Oak.

Hatfield Broad Oak offers an excellent selection of local facilities including an active local church, infants and junior school, nursery, two public houses, ultra-fast broadband and fine country walks.

There is easy access to both Bishop's Stortford and Harlow, each enjoying multiple shopping centres, schools, recreational facilities, mainline train stations serving London Liverpool Street and Cambridge.

The nearest M11 access is junction 7a to the south, and junction 8 to the north, which are both approximately 10

minutes. Bishop's Stortford train station is just an 8-10 minute drive.

The larger village of Hatfield Heath is a five minute drive and enjoys a Co-op mini market and other facilities.

ENTRANCE HALL

CLOAKROOM

LIVING ROOM

13' 2" x 10' 11" (4.03m x 3.34m)

DINING AREA

14' 4" x 12' 9" (4.38m x 3.91m)

KITCHEN

19' 5" x 14' 7" (5.94m x 4.47m)

FIRST FLOOR

LANDING

BEDROOM 1

19' 9" x 11' 3" (6.03m x 3.44m)

ENSUITE

BEDROOM 2

14' 11" x 10' 11" (4.56m x 3.34m)

BEDROOM 3

12' 11" x 8' 3" (3.94m x 2.54m)

BEDROOM 4 / DRESSING ROOM

9' 4" x 7' 10" (2.85m x 2.40m)

FAMILY BATHROOM

AMPLE PARKING

GLORIOUS GARDEN





JAMES&CO
COMMERCIAL | RESIDENTIAL | LETTINGS



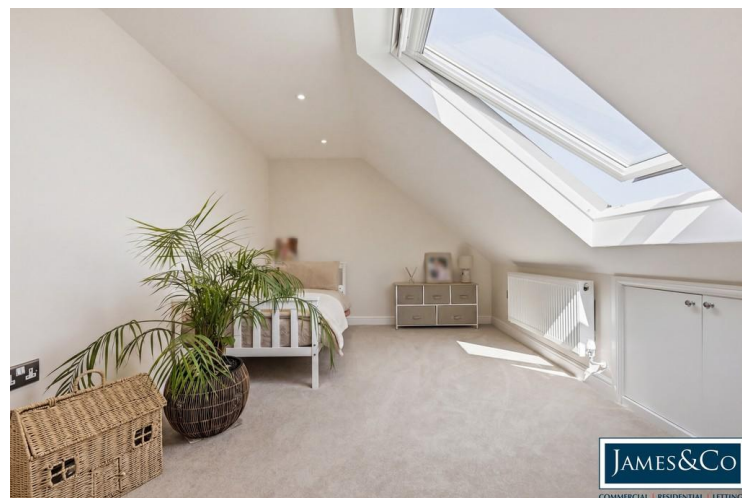
JAMES&CO
COMMERCIAL | RESIDENTIAL | LETTINGS



JAMES&CO
COMMERCIAL | RESIDENTIAL | LETTINGS



JAMES&CO
COMMERCIAL | RESIDENTIAL | LETTINGS



JAMES&CO
COMMERCIAL | RESIDENTIAL | LETTINGS



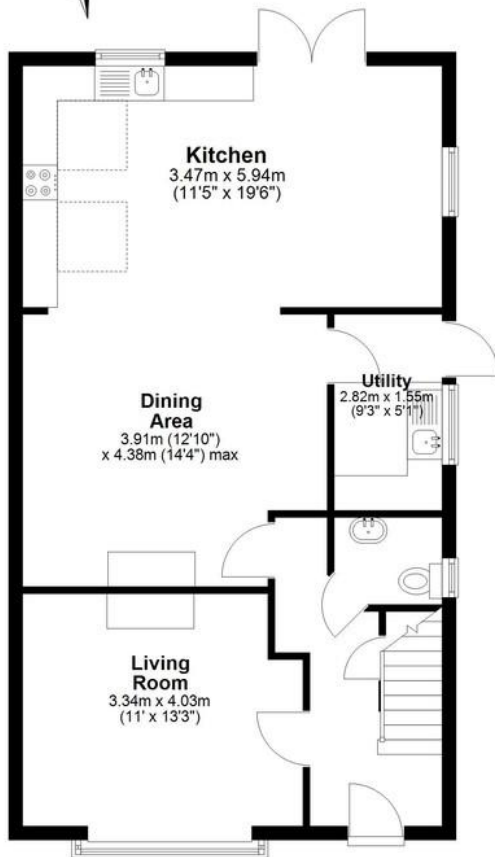
JAMES&CO
COMMERCIAL | RESIDENTIAL | LETTINGS





Ground Floor

Approx. 65.8 sq. metres (708.6 sq. feet)



First Floor

Approx. 73.0 sq. metres (786.2 sq. feet)



Total area: approx. 138.9 sq. metres (1494.8 sq. feet)

This floor plan has been created by a third party and should be used as a general outline for guidance only. Any areas, measurements or distances quoted are approximate and any intending purchaser or lessee should satisfy themselves by inspection, searches, enquiries and/or full survey as to the correctness of each statement. We accept no responsibility or liability for any loss whatsoever that may arise as a result of this plan and the information contained within.

© @modephotouk | www.modephoto.co.uk
Plan produced using PlanUp.™

Springhill

COUNCIL TAX BAND

Tax band E

TENURE

Freehold

LOCAL AUTHORITY

Uttlesford District Council

Agents Note: Whilst every care has been taken to prepare these sales particulars, they are for guidance purposes only. All measurements are approximate and for general guidance purposes only and whilst every care has been taken to ensure their accuracy, they should not be relied upon and potential buyers are advised to recheck the measurements



4 Stortford Road, Dunmow, Essex, CM6 1DA

01371 876678

info@jamesandco.net

www.jamesandco.net

