



Flat 1, 38 Charleville Road | Marylebone Mayfair Soho | London | W14 9JH

£ 3,200 Per Month

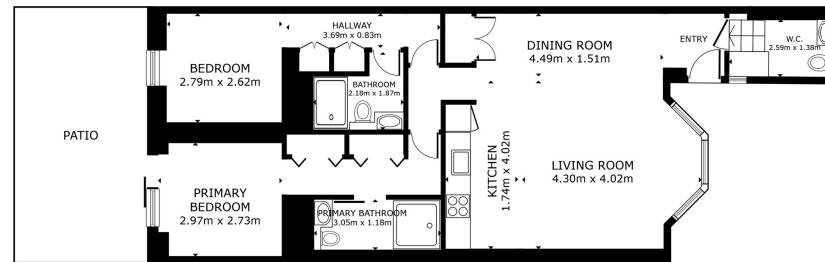
 **cityrelay**

Flat 1, 38 Charleville Road
| Marylebone Mayfair Soho
London | W14 9JH

A well-presented and generously proportioned two-bedroom apartment set within a charming period building in the highly desirable area of West Kensington.



- Two-bedroom lower ground floor apartment
- Principal bedroom with en-suite shower room
- Private rear garden
- Spacious open-plan kitchen, dining and reception area
- Separate family bathroom with full-sized bath
- Offered furnished and suitable for long let



GROSS INTERNAL AREA
 FLOOR PLAN 77.5 m²
 EXCLUDED AREAS - PATIO 19.6 m²
 TOTAL - 77.5 m²
 SIZES AND DIMENSIONS ARE APPROXIMATE, ACTUAL MAY VARY.



Energy Efficiency Rating		Current	Potential
Very energy efficient - lower running costs			
(92 plus) A			
(81-91) B			
(69-80) C		74	79
(55-68) D			
(39-54) E			
(21-38) F			
(1-20) G			
Not energy efficient - higher running costs			
England & Wales		EU Directive 2002/91/EC	

Council Tax Band C
EPC Rating C

10 Cromwell Place
 London
 SW7 2JN
 02038 650611
 lettings@cityrelay.com