

## Kingston Road, SW19

£475,000

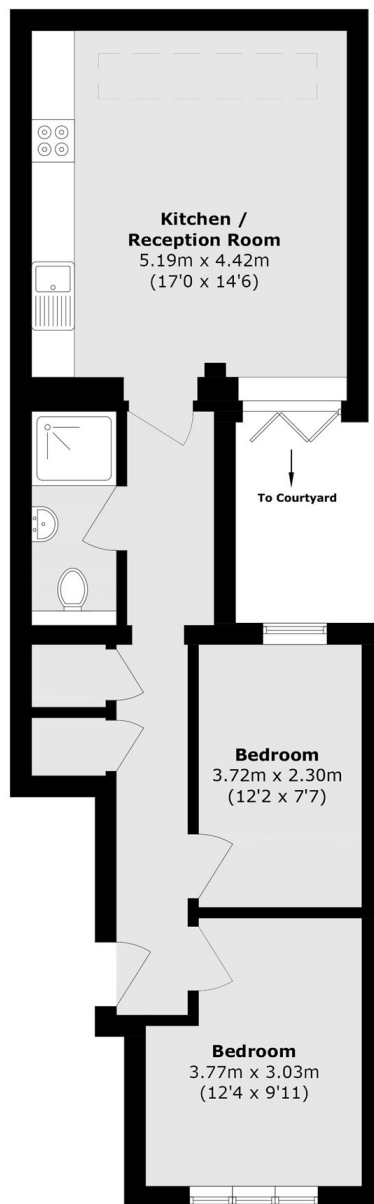
An exceptionally well presented contemporary two double bedroom, ground floor apartment, sold with no onward chain. The property has an abundance of light, its own private garden and a share of freehold.

Conveniently situated close to Wimbledon Town Centre, just moments away from the tram stop at Hartfield Road, Wimbledon district line tube and overground station and a great range of restaurants and bars.

### Features

- Two Double Bedrooms
- Private Garden
- No Onward Chain
- Share Of Freehold
- Exceptional Finish
- Central Location

# Kingston Road, London, SW19



Total area (approx.): 59.0 sq. m (635.0 sq. ft)