



**Guide Price**  
**£475,000**

**Freehold**

4x  2x  3x 

**Tradewinds, Whitstable,  
Kent, CT5**

**OVER 60?**

Secure this property  
for up to **59% less!**

*Wards*  
Helping you move forwards

## Accommodation

### GROUND FLOOR

Entrance

Kitchen: 13'8 x 9'2 (4.17m x 2.80m)

Cloakroom

Study: 7'1 x 6'1 (2.16m x 1.86m)

Lounge: 27'8 x 11'0 (8.44m x 3.36m)

Former Garage: 17'6 x 7'8 (5.34m x 2.34m)

### FIRST FLOOR

Landing

Bedroom 2: 13'8 x 9'3 (4.17m x 2.82m)

Bedroom 4: 11'3 x 6'0 (3.43m x 1.83m)

Bathroom

Bedroom 3 : 10'5 x 8'6 (3.18m x 2.59m)

Bedroom 1 : 12'0 x 11'1 (3.66m x 3.38m)

Ensuite Shower Room

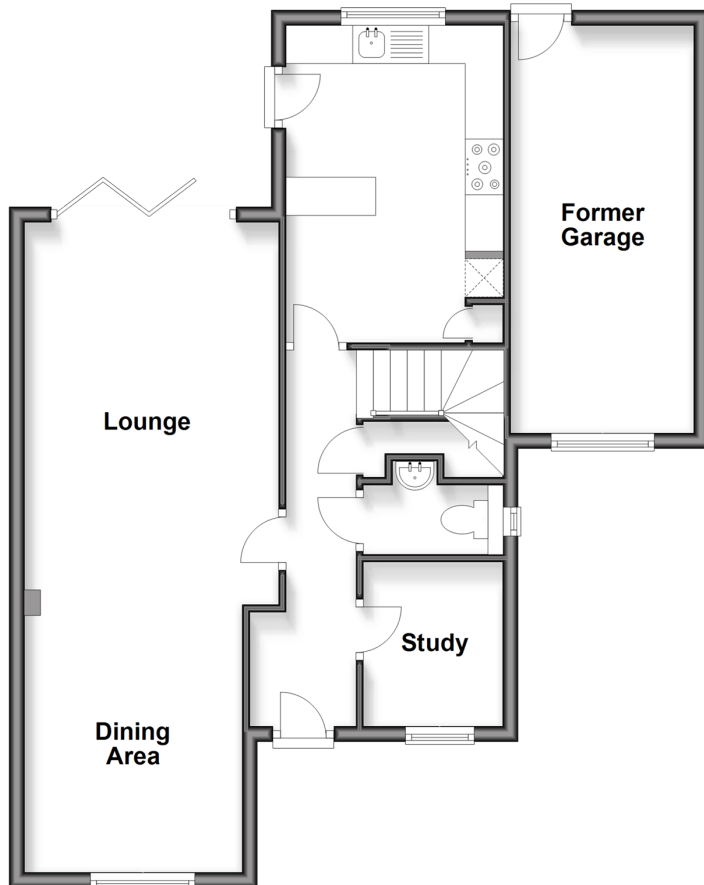
### OUTSIDE

Driveway

Rear Garden

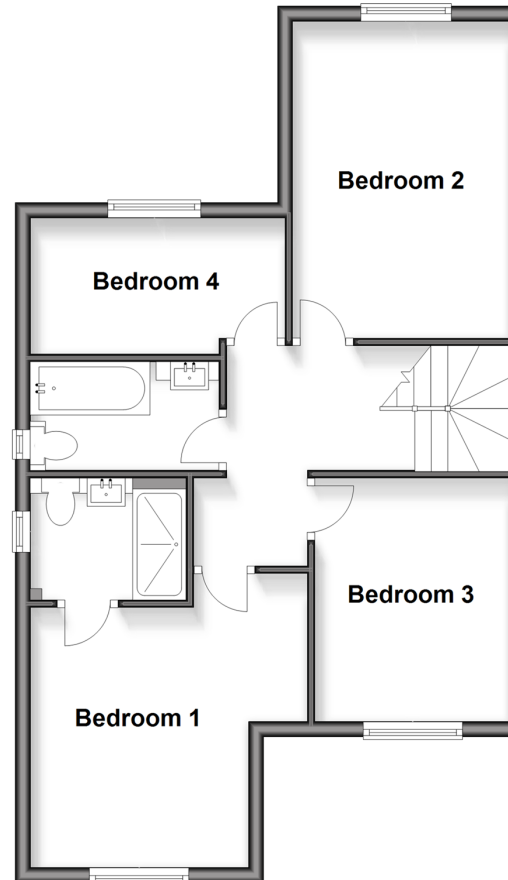
### Ground Floor

Approx. 68.0 sq. metres (731.4 sq. feet)



### First Floor

Approx. 54.5 sq. metres (587.0 sq. feet)





## Main features

- Stylish detached home with a high quality garage conversion
- Impressive open plan lounge/diner with bi fold doors and seamless garden access
- Well proportioned bedrooms, including a luxurious en suite primary bedroom
- Beautifully landscaped walled gardens
- Highly desirable coastal setting, moments from Seasalter beach



### Nearest Schools

Primary Schools: Joy Lane Primary 0.6 miles, Whitstable Junior School 1.2 miles, Whitstable and Seasalter Endowed C of E Junior School 1.3 miles

Secondary Schools: The Whitstable School 1.4 miles,



### Transport Information

Train Stations: Whitstable 1.5 miles, Chestfield & Swalecliffe 2.8 miles, Canterbury West 4.9 miles



### Address

Tradewinds, Whitstable, Kent, CT5



### Directions

For directions to this property please contact us.



**Wards**  
Helping you move forwards

Call Whitstable Branch 01227 772272 ■ [wardsof Kent.co.uk](http://wardsof Kent.co.uk)



■ If buying to rent, please check if Local Authority licensing schemes apply before proceeding

■ Through a Homewise Home For Life Plan people aged 60+ can secure this property for up to 59% less, by purchasing a Lifetime Lease



12000QA7/20260512/AR/NF