

**Location:**

**Key points:**

- Lower ground floor flat
- Unfurnished
- Awaiting photos
- Close to Acton Mainline Elizabeth Line

# Do Better:

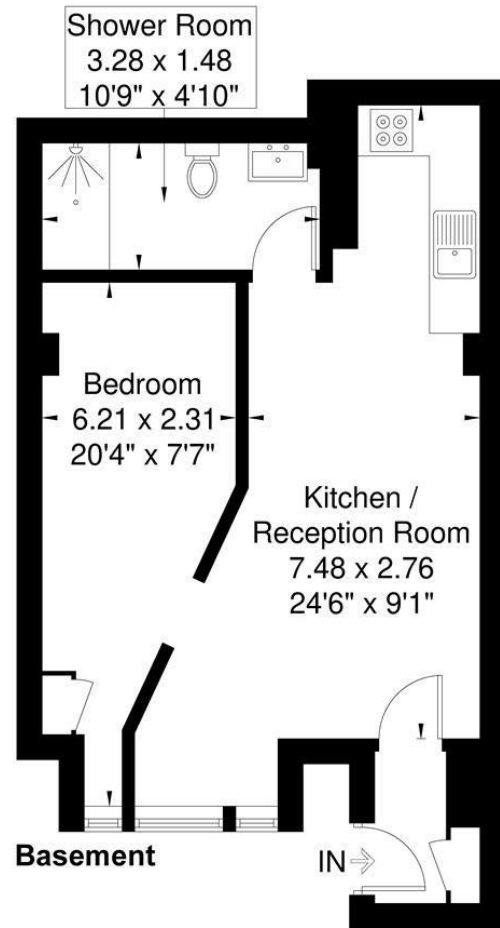
**Acton**  
lettings@astonrowe.co.uk

57-59 Churchfield Road,  
Acton, London, W3 6AY

020 8992 3600



**Allison Road**  
Approximate Gross Internal Area = 41.7 sq m / 448 sq ft



Although every attempt has been made to ensure accuracy, all measurements are approximate.  
The floorplan is for illustrative purposes only and not to scale.  
© www.perspective.co.uk

**To Let: £1,575 Per Month**

**Allison Road, Acton W3 6JF**

Energy Efficiency Rating		Environmental Impact (CO <sub>2</sub> ) Rating	
Current	Potential	Current	Potential
79	79		

**Energy Efficiency Rating**  
 Very energy efficient - lower running costs  
 (92 plus) A  
 (81-91) B  
 (69-80) C  
 (55-68) D  
 (39-54) E  
 (21-38) F  
 (1-20) G  
 Not energy efficient - higher running costs  
 England & Wales EU Directive 2002/91/EC

**Environmental Impact (CO<sub>2</sub>) Rating**  
 Very environmentally friendly - lower CO<sub>2</sub> emissions  
 (92 plus) A  
 (81-91) B  
 (69-80) C  
 (55-68) D  
 (39-54) E  
 (21-38) F  
 (1-20) G  
 Not environmentally friendly - higher CO<sub>2</sub> emissions  
 England & Wales EU Directive 2002/91/EC

- 1 Reception Rooms
- 1 Bedrooms
- 1 Bathrooms

## The current tenant says:

A one bedroom low ground floor flat which is located a short walk to Acton Mainline Elizabeth Line. Ideal for a couple or single professional the property consists off spacious open plan kitchen reception, double bedroom and modern Bathroom.

Allison Road is walking distance to Churchfield Road, Acton Park and Acton Central overground.

EPC rating C

## What's better:

