



Connells

Vinstone Way
Plymouth



Property Description

This beautifully refurbished 3-bedroom home offers modern, stylish living throughout. The bright entrance hall leads into a spacious lounge with light wood-effect flooring and contemporary grey detailing. The newly fitted kitchen features sleek grey cabinets, marble-effect worktops, black fixtures, and built-in appliances, creating a clean and modern cooking space.

Upstairs are two well-presented bedrooms and a luxurious bathroom finished with grey marble-style tiles, a rainfall shower, black-framed screen, and modern vanity. A brand-new roof replacement has recently been completed, providing added peace of mind for future owners.

Outside, the rear garden is arranged over two levels with a lawned area below and a raised gravelled terrace ideal for seating. The front and back areas are low-maintenance and neatly finished.

Perfectly updated and move-in ready, this home offers stylish, comfortable living for first-time buyers or investors.

Front Of House

A paved path or patio area sits directly in front of the house.

There is a short hedge bordering the front, creating a natural boundary with the walkway.

A wooden fence panel runs along the right side.

Porch

Double glazing window to the front elevation.

Reception 1

A staircase rises directly in front of the entrance. To the Right an open doorway with dark grey trim leading to the lounge.

Lounge

12' 6" x 11' 5" (3.81m x 3.48m)

The room is open and spacious, with a simple rectangular layout.

At the far side of the lounge, there is a double-door opening leading into the kitchen.

These doors are made of natural wood and fitted with four frosted-glass panels each, adding style while allowing light to flow between rooms. Electrical sockets and a wall plate—finished in a metallic or dark tone. Double glazing window to the front elevation, white radiator sits beneath the window.

Kitchen

10' 2" x 7' 7" (3.10m x 2.31m)

A range of matching wall and base units with worktops above. A stainless-steel gas hob with four burners is installed within the counter. Above the hob is a glass-curved extractor hood with a black chimney, adding a sleek visual touch. Beneath the hob, a built-in oven.

Multiple chrome-finished power outlets are mounted along the wall. The worktop is a marble-effect surface in white with subtle grey veining.

This countertop ties in with the grey cabinetry while keeping the overall space bright. The

cabinets are finished in light grey. Beneath the window is a deep black composite sink with a contemporary, curved black mixer tap. A white boiler unit is mounted on the wall above a section of worktop. Double glazing window to the rear elevation. Plumbing for washing machine.

Reception 2

White radiator. White PVC exterior door,

W.C

The toilet has a modern close-coupled design, The sink is a very compact basin built directly into the top of the cistern.

Office/3rd Bedroom

7' 3" x 5' 6" (2.21m x 1.68m)

Two double glazing widows, one to the side elevation and the other to the rear elevation. White radiator.

Bedroom 1

12' 4" x 11' 11" (3.76m x 3.63m)

Double glazing window to the front elevation. White radiator. Modern wall-mounted electrical socket.

Bedroom 2

10' 5" x 8' 5" (3.17m x 2.57m)

Double glazing window to the rear elevation. White radiator. modern double electrical socket mounted on a light-coloured interior walls.

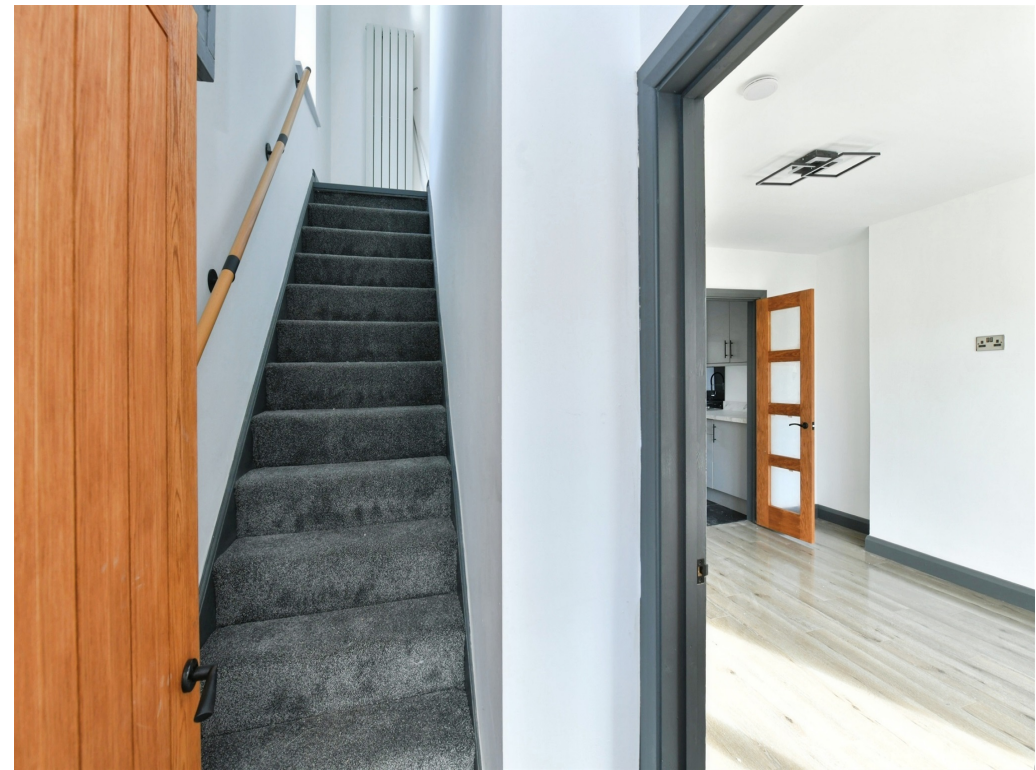
Bathroom

The walls are fully tiled in a dark grey marble-effect tile. A rectangular white bathtub runs along the left wall.

Attached to the bath is a black framed shower screen featuring slim vertical and horizontal bars, Large matte black square rainfall shower head. Modern close-coupled toilet. Ceramic basin with matte-black mixer tap with a single lever handle. Obscured double glazing window to rear elevation.

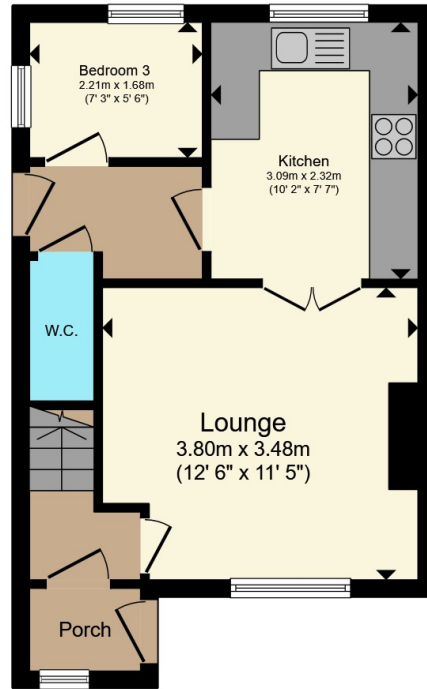
Rear Garden

The rear garden is arranged over two levels, creating a structured, tiered outdoor space. The lower section features a rectangular patch of bright green lawn, neatly bordered and well-kept. The garden is a fully enclosed outdoor space with a simple, low-maintenance design. The majority of the garden is covered with light grey decorative gravel, with a square paved patio area made of pale paving slabs. Vertical wooden panel fencing and overlapping wooden panels, all in a natural timber finish.

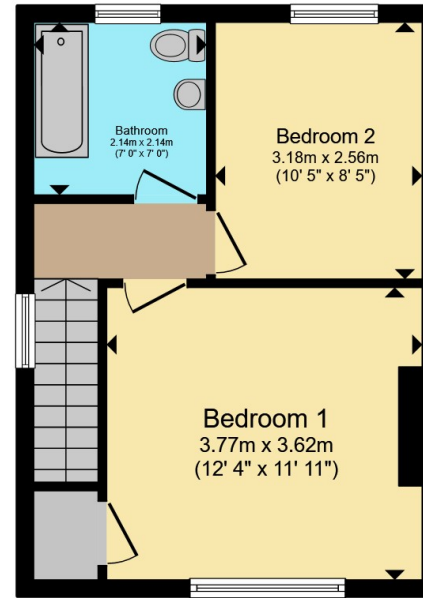








Ground Floor



First Floor

Total floor area 67.8 m² (730 sq.ft.) approx

This floor plan is for illustrative purposes only. It is not drawn to scale. Any measurements, floor areas (including any total floor area), openings and orientation are approximate. No details are guaranteed, they cannot be relied upon for any purpose and they do not form part of any agreement. No liability is taken for any error, omission or misstatement. A party must rely upon its own inspection(s). Powered by www.propertybox.io



To view this property please contact Connells on

T 01752 351616
E stbudeau@connells.co.uk

15 Victoria Road St Budeaux
 PLYMOUTH PL5 1RW

EPC Rating: C Council Tax Band: A

Tenure: Freehold

view this property online connells.co.uk/Property/SBU109723



1. MONEY LAUNDERING REGULATIONS Intending purchasers will be asked to produce identification documentation at a later stage and we would ask for your co-operation in order that there will be no delay in agreeing the sale. 2. These particulars do not constitute part or all of an offer or contract. 3. The measurements indicated are supplied for guidance only and as such must be considered incorrect. Potential buyers are advised to recheck measurements before committing to any expense. 4. We have not tested any apparatus, equipment, fixtures, fittings or services and it is in the buyers interest to check the working condition of any appliances.

Connells Residential is registered in England and Wales under company number 1489613, Registered Office is Cumbria House, 16-20 Hockliffe Street, Leighton Buzzard, Bedfordshire, LU7 1GN. VAT Registration Number is 500 2481 05.

See all our properties at www.connells.co.uk | www.rightmove.co.uk | www.zoopla.co.uk

Property Ref: SBU109723 - 0009