



Price

£220,000

Leasehold

1x  1x  1x 

**Bramley Vale, Cranleigh,
Surrey, GU6**

cubitt & west
Helping you move forwards



Main features

- A light and bright apartment
- Shared Ownership price equates to 100% (a min of 25% is available)
- Open plan living with a large bedroom
- Located in a semi rural area with generous communal grounds
- Allocated parking and lots of visitor parking

Accommodation

FIRST FLOOR

Entrance Hallway

Lounge: 13'5 x 13'1 (4.09m x 3.99m)

Kitchen: 9'0 x 8'7 (2.75m x 2.62m)

Bedroom : 13'1 x 10'8 (3.99m x 3.25m)

Bathroom: 9'0 x 6'3 (2.75m x 1.91m)

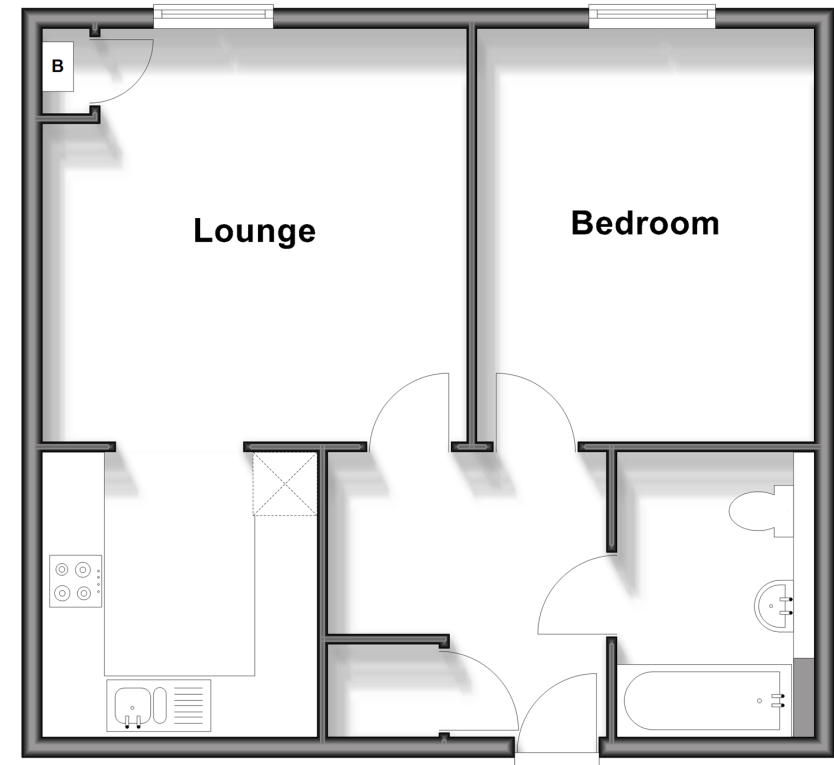
OUTSIDE

Allocated Parking

Communal Garden

First Floor

Approx. 50.8 sq. metres (546.4 sq. feet)



Call Cranleigh - 01483 271567 ■ cubittandwest.co.uk

- Legal advice should be taken to verify fixtures/fittings, planning, alterations and/or lease details
- Appliances & services are untested, dimensions are approximate and floor plans are not to scale



20306899/20251128/RW/RD