



RIBBLESDALE ROAD, SW16

£950,000

Four bedrooms
Excellent school catchments
South-East facing garden
Three floors
Double glazed windows
EPC: C

@marshandparsons
marshandparsons.co.uk

MARSH &
PARSONS

ABOUT THE PROPERTY

A beautifully presented four bedroom family home located in the heart of Furzedown.

The ground floor comprises a spacious reception room leading through to a well-maintained kitchen, with attractive wooden flooring throughout. Bi-fold doors open onto a secluded, private south-east-facing garden, creating an ideal space for entertaining and family living. To the rear of the garden is a detached outbuilding with electricity, providing the perfect home office or studio space. Total sq ft including the outbuilding is (approx) 1,378.9







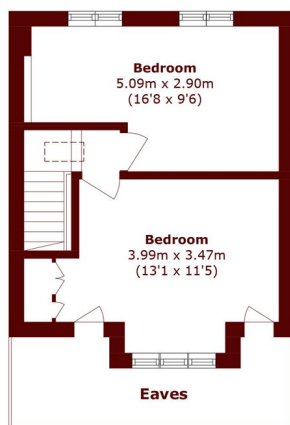
FURTHER DETAILS

On the first floor, you will find two generously sized bedrooms, both benefiting from built-in wardrobes, as well as a contemporary family bathroom. The second floor offers a further two spacious bedrooms, each with ample eaves storage, making excellent use of the available space.

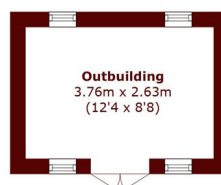
Ribblesdale Road is an ideal spot in the Furzedown area, providing easy access to both central Furzedown for the boutique shops, cafés and restaurants on Moyser Road, and Tooting Bec / Balham, for a plethora of amenities, including the Northern Line Underground Stations. There are several desirable schools nearby, including the highly desirable Graveney School.



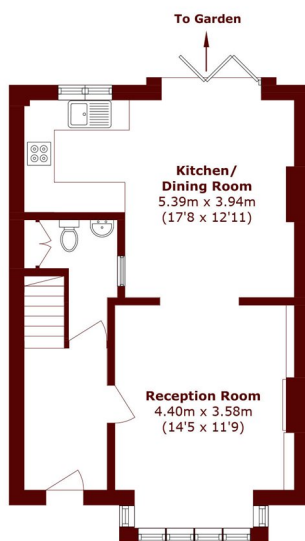
STEP INSIDE RIBBLESDALE ROAD



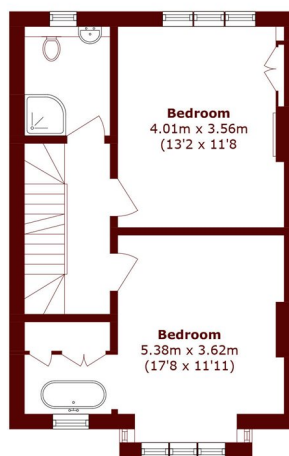
Second Floor



Ground Floor



Ground Floor



First Floor

Total area (approx.): 118.3 sq. m (1273.3 sq. ft)
Outbuilding area (approx.): 9.8 sq. m (105.4 sq. ft)
(Excluding Eaves)

Tooting
020 8767 3655

Energy Rating: C We aim to make our particulars both accurate and reliable. However, they are not guaranteed; nor do they form part of an offer or contract. If you require clarification on any points then please contact us, especially if you're traveling some distance to view. Please note that appliances and heating systems have not been tested and therefore no warranties can be given as to their good working order

**MARSH &
PARSONS**