



**Guide Price**  
**£240,000**

**Freehold**

2x  1x  1x 

**Saunders Street,  
Gillingham, Kent, ME7**

**OVER 60?**

Secure this property  
for up to **59% less!**

*Wards*  
Helping you move forwards



## Main features

- Rarely available affordable detached house
- Separate upstairs bathroom
- Garage
- Gas central heating and double glazing
- Walking distance of Gillingham High Street and main line station

## Accommodation

### GROUND FLOOR

Hallway

Lounge: 13'1 at widest point x 10'9 at widest point (3.99m x 3.28m)

Kitchen/Diner: 14'6 at widest point x 11'5 (4.42m x 3.48m)

Cloakroom

Utility Room

### FIRST FLOOR

Landing

Bedroom 1: 13'1 at widest point x 11'0 at widest point (3.99m x 3.36m)

Bedroom 2: 11'2 x 9'0 (3.41m x 2.75m)

Bathroom

### OUTBUILDING

Garage: 17'6 x 9'9 (5.34m x 2.97m)

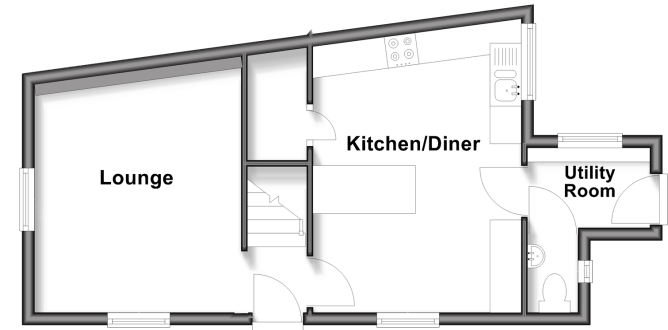
### OUTSIDE

Rear Garden

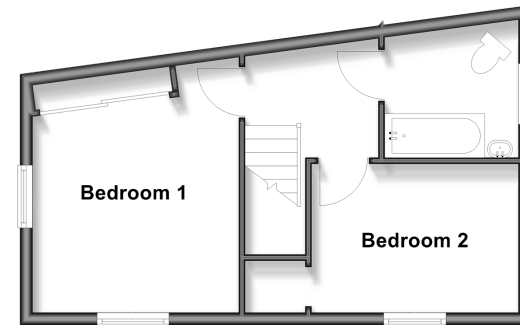
**Call Gillingham - 01634 851191 ■ [wardsof Kent.co.uk](http://wardsof Kent.co.uk)**

- Legal advice should be taken to verify fixtures/fittings, planning, alterations and/or lease details
- Appliances & services are untested, dimensions are approximate and floor plans are not to scale
- Through a Homewise Home For Life Plan people aged 60+ can secure this property for up to 50% less, by purchasing a Lifetime Lease.

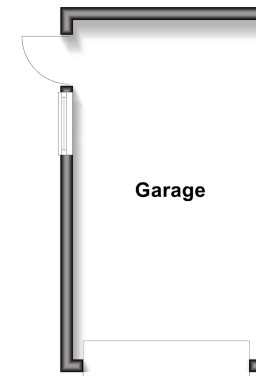
**Ground Floor**  
Approx. 36.2 sq. metres (389.8 sq. feet)



**First Floor**  
Approx. 32.4 sq. metres (348.4 sq. feet)



**Outbuilding**  
Approx. 16.1 sq. metres (173.7 sq. feet)



10927250/20251011/ML/GS