

EDEN MIDCALF
— SALES & LETTINGS —

£340,000
Comber Grove
Stourbridge, DY7 6EN

PROPERTY SUMMARY

A well-presented three-bedroom semi-detached dormer bungalow, occupying a delightful corner plot within this sought-after cul-de-sac in Kinver. Offering versatile accommodation and plenty of scope for further enhancement, the property includes two reception rooms, a conservatory enjoying elevated views across Kinver and beyond, a ground floor double bedroom and modern wet room, together with two first floor bedrooms and an en-suite WC. Outside, there is an attractive rear garden and private gated driveway to the rear, with a detached garage with power and lighting. Available with no upward chain! EPC=TBC

3



1



2



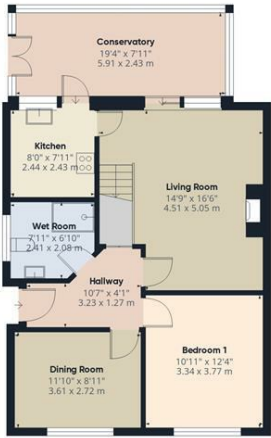


LOCAL AUTHORITY
South Staffordshire

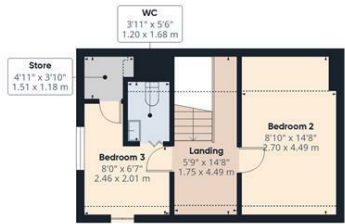
TENURE
Freehold

COUNCIL TAX BAND
C

VIEWINGS
By prior appointment only



Ground Floor Building 1



Floor 1 Building 1



Approximate total area⁽¹⁾
1089 ft²
101 m²

Reduced headroom
67 ft²
6.2 m²

(1) Excluding balconies and terraces

Reduced headroom
----- Below 5 ft/1.5 m

Calculations reference the RICS IPMS 3C standard. Measurements are approximate and not to scale. This floor plan is intended for illustration only.

GIRAFFE360

Energy Efficiency Rating		
	Current	Potential
<i>Very energy efficient - lower running costs</i>		
(92 plus) A		
(81-91) B		
(69-80) C		
(55-68) D		
(39-54) E		
(21-38) F		
(1-20) G		
<i>Not energy efficient - higher running costs</i>		
England & Wales	EU Directive 2002/91/EC	

Agents Note: Whilst every care has been taken to prepare these particulars, they are for guidance purposes only. All measurements are approximate and are for general guidance purposes only and whilst every care has been taken to ensure their accuracy, they should not be relied upon and potential buyers/tenants are advised to recheck the measurements.

EDEN MIDCALF
SALES & LETTINGS

28 High Street
Kinver
DY7 6HF

01384 878000

<https://www.edenmidcalf.co.uk/>
us/