
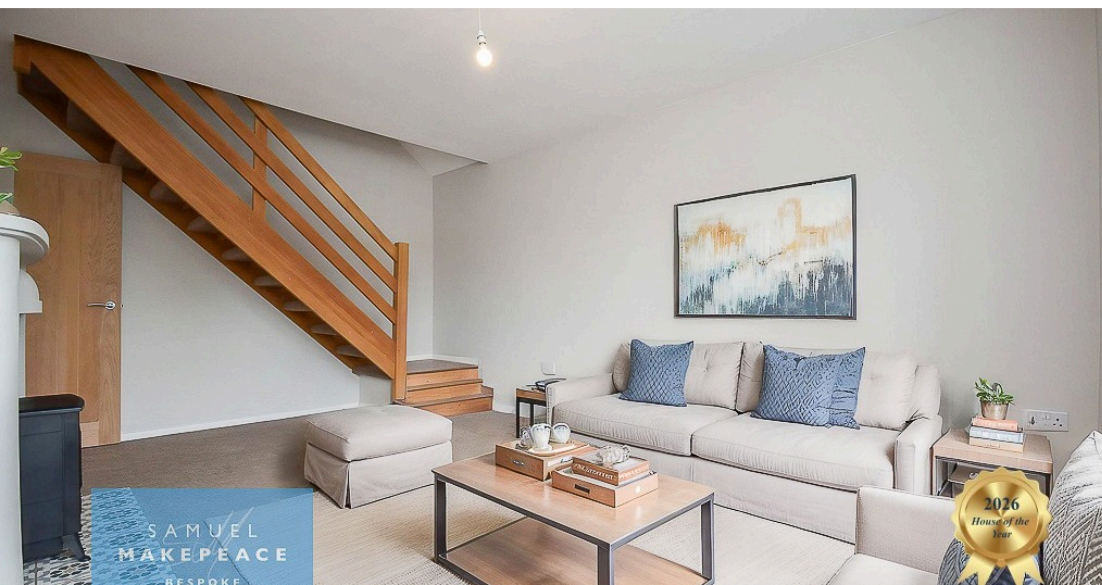




 **3**  
Bedrooms

 **1**  
Bathroom

 **1**  
Reception



- BEAUTIFULLY RENOVATED DORMER BUNGALOW WITH VIEWS
- STYLISH FITTED KITCHEN WITH MODERN FINISH
- BRIGHT AND SPACIOUS LIVING ROOM WITH BAY WINDOW
- BEAUTIFULLY PRESENTED BEDROOMS FILLED
- DOUBLE GLAZED FRENCH DOORS TO THE GARDEN FROM THE BEDROOMS
- WELL-DESIGNED BATHROOM WITH QUALITY FINISHES
- VERSATILE FIRST FLOOR OFFICE SPACE
- USEFUL LOFT ROOM WITH POWER AND LIGHTING
- DRIVEWAY PARKING AND ATTRACTIVE FRONT GARDEN



**Roaring onto the market... this Red Lion Close home is a real showstopper.**

Set within the sought-after Red Lion Close, this beautifully renovated dormer bungalow offers stylish, light-filled living with a modern finish throughout. Thoughtfully redesigned to create a home that is both practical and inviting, every room has been carefully enhanced to provide comfortable contemporary living in a highly desirable setting.

From the moment you arrive, the property impresses with its paved driveway, neat lawn and attractive planting, creating superb kerb appeal and setting the tone for what's to come inside. Step through the entrance hall into a home that flows effortlessly from room to room, with a bright and welcoming atmosphere throughout.

The kitchen has been beautifully modernised to create a sleek and stylish heart of the home, offering a contemporary finish combined with everyday practicality. Bright and inviting, it's a space perfectly suited to both busy mornings and relaxed evenings, with a layout designed for modern living.

Positioned to the front of the property, the living room is a wonderfully light-filled space full of warmth and character. A feature bay window enhances the sense of space, while the contemporary electric fireplace creates an attractive focal point, making this the perfect room to relax and unwind all year round.

The bedrooms are bright and inviting, thoughtfully designed to feel calm and comfortable, with double glazed French doors opening directly onto the outside space and creating a wonderful connection to the garden while allowing natural light to pour in.

The bathroom is stylishly presented with a fresh modern feel, featuring a clean tiled finish and a practical layout that perfectly complements the overall quality and presentation of the home.

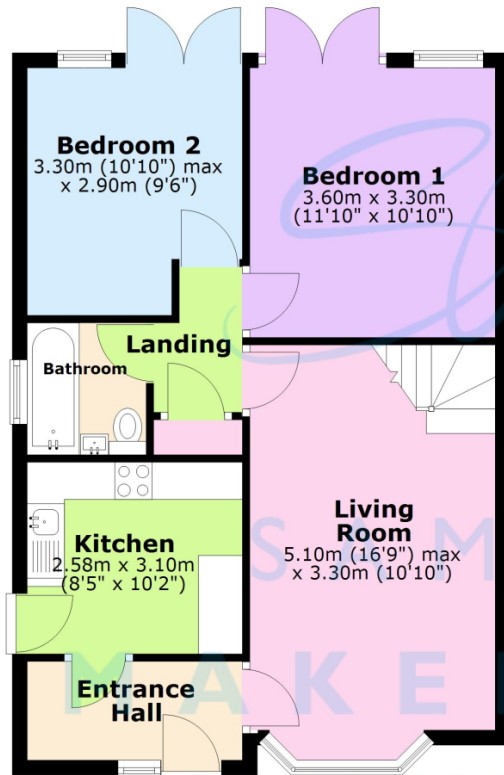
To the first floor, the property continues to impress with a third bedroom with a far reaching view of the Welsh Mountains and Joddrell Bank, that could be used as a versatile office space, ideal for home working, study or hobbies, a flexible space to suit a variety of needs.

Beautifully presented throughout and ready to move straight into, this impressive home combines modern style, versatile living space and a highly sought-after location, making it an exceptional opportunity for a wide range of buyers.

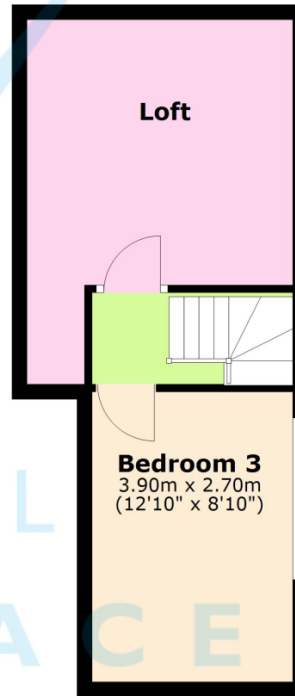
**Disclaimer:** All property particulars are provided in good faith and are believed to be accurate to the best of our knowledge at the time of publication. Samuel Makepeace (Newcastle & Stoke) Ltd t/a Samuel Makepeace Bespoke Estate Agents cannot accept any responsibility for any errors, omissions, or misstatements. Prospective purchasers are advised to verify the details independently and should not rely solely on the information provided when making decisions. These particulars remain the property of Samuel Makepeace Bespoke Estate Agents Stoke on Trent, Newcastle Under Lyme & Alsager.



**Ground Floor**



**First Floor**



Scan me for more info



Total area: approx. 86.1 sq. metres (926.3 sq. feet)

Floorplans are provided as a guide only. All measurements are not to be relied upon. To confirm any measurements and layouts you must check yourself. Samuel Makepeace Bespoke Estate Agents do not accept any liability for the accuracy of this.

Plan produced using PlanUp.

