



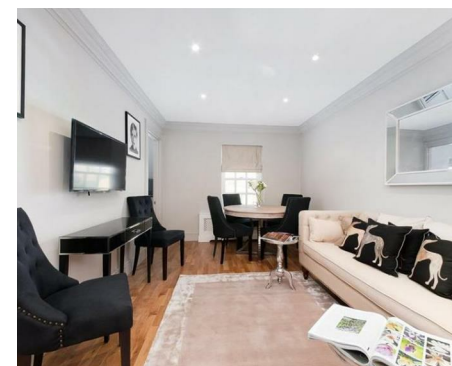
NEWINGTON  
LONDON

2 Bedrooms

Apartment

Located in London

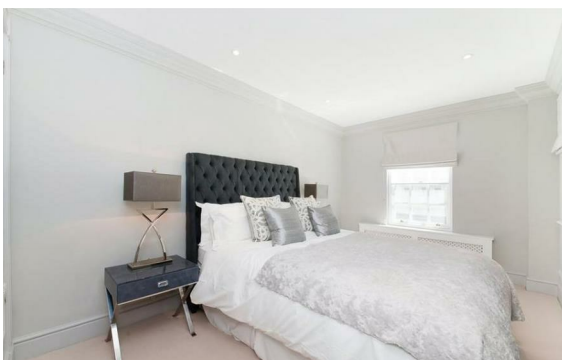
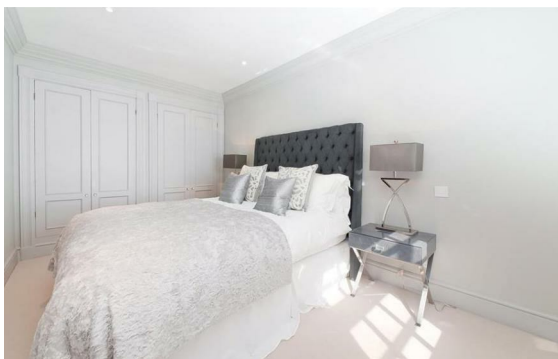
£1,350 Per Month



info@newingtonstates.com

<http://www.newingtonstates.com>

020 7724 2233



A superbly refurbished two-bedroom apartment located within a prestigious portered building close to the Hyde Park. The property has been finished to a high contemporary standard, offering bright, well-laid-out accommodation with quality fixtures, modern finishes and stylish interiors throughout.

Set in an exceptional central London position, the building benefits from excellent security and convenience, with Hyde Park opposite and the amenities of Marble Arch and Mayfair within easy reach.

EPC rating: C

## Energy Efficiency Rating: C

Agents Note: Whilst every care has been taken to prepare these particulars, they are for guidance purposes only. All measurements are approximate and are for general guidance purposes only and whilst every care has been taken to ensure their accuracy, they should not be relied upon and potential buyers/tenants are advised to recheck the measurements.

# NEWINGTON LONDON

60 Upper Montagu Street

London

W1H 1SN

020 7724 2233

[info@newingtonstates.com](mailto:info@newingtonstates.com)

<http://www.newingtonstates.com>