



Jubilee Close, Erpingham, Norwich, NR11 7QZ

welcome to

Jubilee Close, Erpingham, Norwich

Don't miss this deceptively spacious detached bungalow set in the sought after village of Erpingham. This property enjoys 2 bedrooms, bathroom, kitchen, lounge and impressive garden room. Outside this property has parking, garden & garage and is offered with no onward chain.



Description

A well-presented two-bedroom detached bungalow situated in the sought-after village of Erpingham, offered with no onward chain.

The accommodation comprises a comfortable lounge, a fitted kitchen, and a bathroom, along with two well-proportioned bedrooms. To the rear of the property is an impressive garden room, providing a versatile additional living space with views over the garden.

Outside, the property benefits from off-road parking, a garage, and a private garden, making it an ideal home for those seeking single-level living in a peaceful location.

Early viewing is highly recommended.

Entrance Hall

Front door opens into hall with built-in cupboard, wood effect floor & radiator.

Bedroom One

Double glazed window with view over the rear garden, radiator, timber divide behind the bed for a potential dressing area.

Bedroom Two

Double glazed window to the front aspect & radiator.

Bathroom

Fitted with suite comprising bath with shower over, wash hand basin & low level WC. Heated towel rail, extractor fan and double glazed window.

Kitchen

Fitted with a range of wall and base level units, work surface with tiled splashback, electric cooker point and hood over, plumbing for a washing machine, double glazed window, wood effect floor and central heating boiler.

Lounge

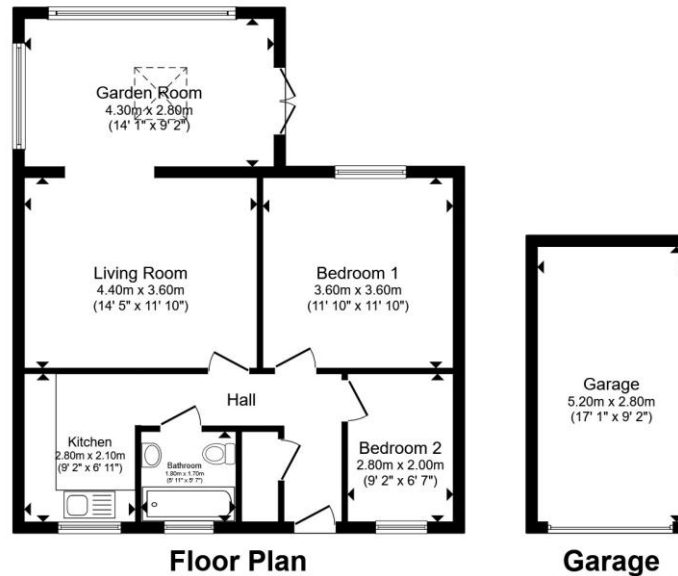
Wood effect floor, radiator, TV point & opens to garden room.

Garden Room

Superb room that is triple aspect with a range of double glazed windows and double doors to the rear garden, tiled floor, radiator and skylight.

Outside

To the front of the property is a driveway and path to front door. To the rear is a further driveway which enjoys off-road parking leading to a single garage with up and over door and the rear garden is laid to lawn.



Total floor area 81.4 m² (876 sq.ft.) approx

This floor plan is for illustrative purposes only. It is not drawn to scale. Any measurements, floor areas (including any total floor area), openings and orientation are approximate. No details are guaranteed, they cannot be relied upon for any purpose and they do not form part of any agreement. No liability is taken for any error, omission or misstatement. A party must rely upon its own inspection(s). Powered by www.propertybox.io


william
h brown



view this property online williamhbrown.co.uk/Property/AYS110274



welcome to

Jubilee Close, Erpingham, Norwich

- Well Appointed Detached Bungalow
- 2 Bedrooms
- Lounge + Impressive Garden Room
- No Onward Chain
- Garage & Parking
- Gardens
- Village Location

Tenure: Freehold EPC Rating: C
Council Tax Band: C

£260,000



Please note the marker reflects the
postcode not the actual property

view this property online [williamhbrown.co.uk/Property/AYS110274](https://www.williamhbrown.co.uk/Property/AYS110274)



Property Ref:
AYS110274 - 0002

1. MONEY LAUNDERING REGULATIONS Intending purchasers will be asked to produce identification documentation at a later stage and we would ask for your co-operation in order that there is no delay in agreeing the sale. 2. These particulars do not constitute part or all of an offer or contract. 3. The measurements indicated are supplied for guidance only and as such must be considered incorrect. Potential buyers are advised to recheck measurements before committing to any expense. 4. We have not tested any apparatus, equipment, fixtures or services and it is in the buyer's interest to check the working condition of any appliances. 5. Where an EPC, or a Home Report (Scotland only) is held for this property, it is available for inspection at the branch by appointment. If you require a printed version of a Home Report, you will need to pay a reasonable production charge reflecting printing and other costs. 6. We are not able to offer an opinion either written or verbal on the content of these reports and this must be obtained from your legal representative. 7. Whilst we take care in preparing these reports, a buyer should ensure that his/her legal representative confirms as soon as possible all matters relating to title including the extent and boundaries of the property and other important matters before exchange of contracts.

William H Brown is a trading name of Sequence (UK) Limited which is registered in England and Wales under company number 4268443, Registered Office is Cumbria House, 16-20 Hockliffe Street, Leighton Buzzard, Bedfordshire, LU7 1GN. VAT Registration Number is 500 2481 05.



william h brown



01263 735252



Aylsham@williamhbrown.co.uk



23 Market Place, AYLSHAM, NORWICH,
Norfolk, NR11 6EL



[williamhbrown.co.uk](https://www.williamhbrown.co.uk)