

est 1979

Jeremy
Leaf & Co.



Gainsborough Road, London

£300,000

- Open Plan Kitchen / Reception
- Within 0.2 Miles of Tube Station
- One Bedroom
- Bathroom
- Council Tax Band B
- Service charge - £1,700 p.a

863 High Road, London, N12 8PT
020 8446 4295

property@jeremyleaf.co.uk
<https://www.jeremyleaf.co.uk/>

Gainsborough Road, London, N12 8AL

A one bedroom bedroom ground floor flat conveniently located for North Finchley's shopping and transport amenities and within 0.2 miles of Woodside Park tube station. Ideal for first time buyers or the rental market. 150 year lease.



1



1



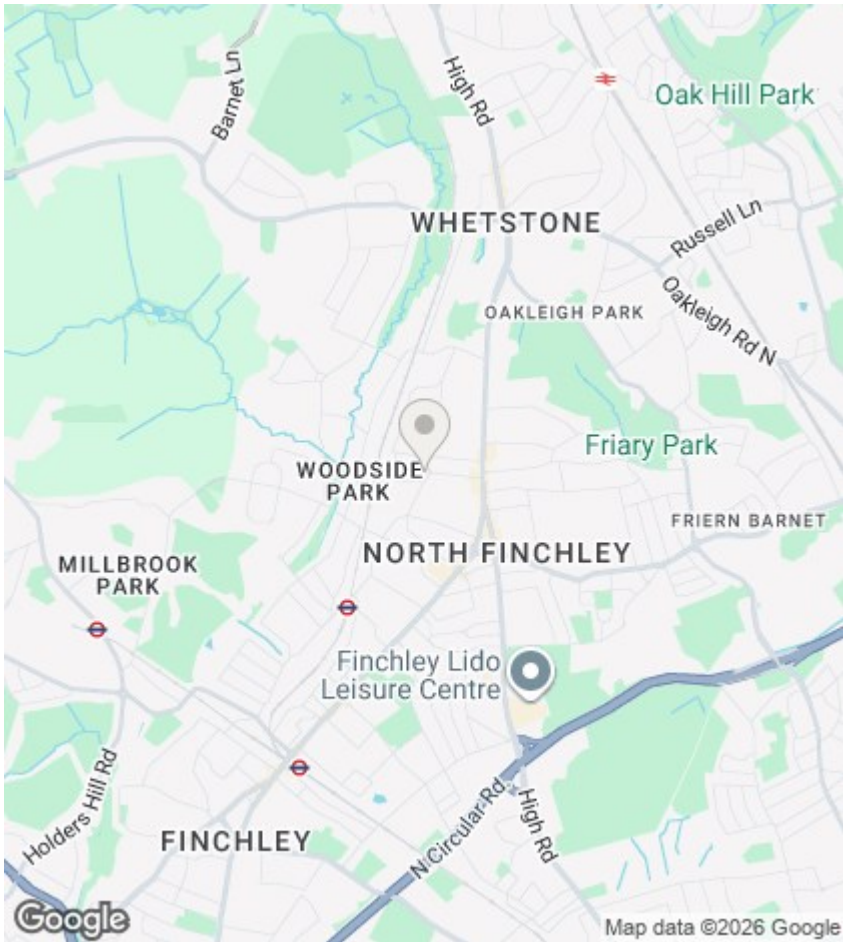
1



E

Council Tax Band: C





Directions

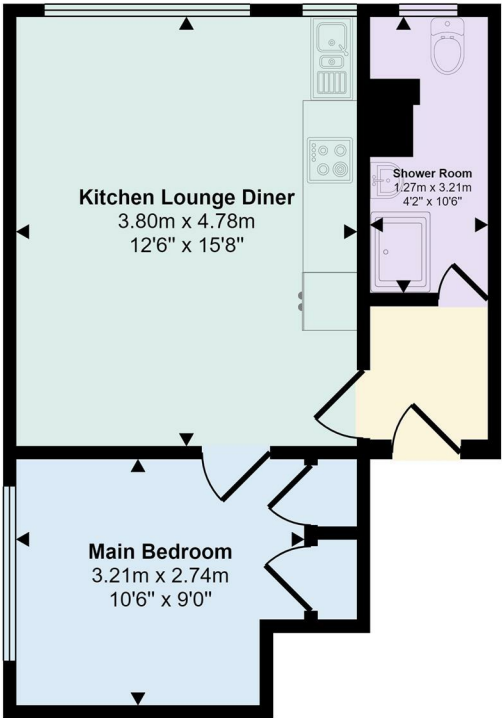
Viewings

Viewings by arrangement only. Call 020 8446 4295 to make an appointment.

EPC Rating: E

| Energy Efficiency Rating | | |
|---|---------|-------------------------|
| | Current | Potential |
| Very energy efficient - lower running costs | | |
| (92 plus) A | | |
| (81-91) B | | |
| (69-80) C | | 79 |
| (55-68) D | | |
| (39-54) E | 49 | |
| (21-38) F | | |
| (1-20) G | | |
| Not energy efficient - higher running costs | | |
| England & Wales | | EU Directive 2002/91/EC |

35 sq m / 380 sq ft



Floorplan