



DANIEL ARCHER

exp<sup>®</sup> UK

@ daniel.archer@exp.uk.com

🌐 danielarcher.exp.uk.com

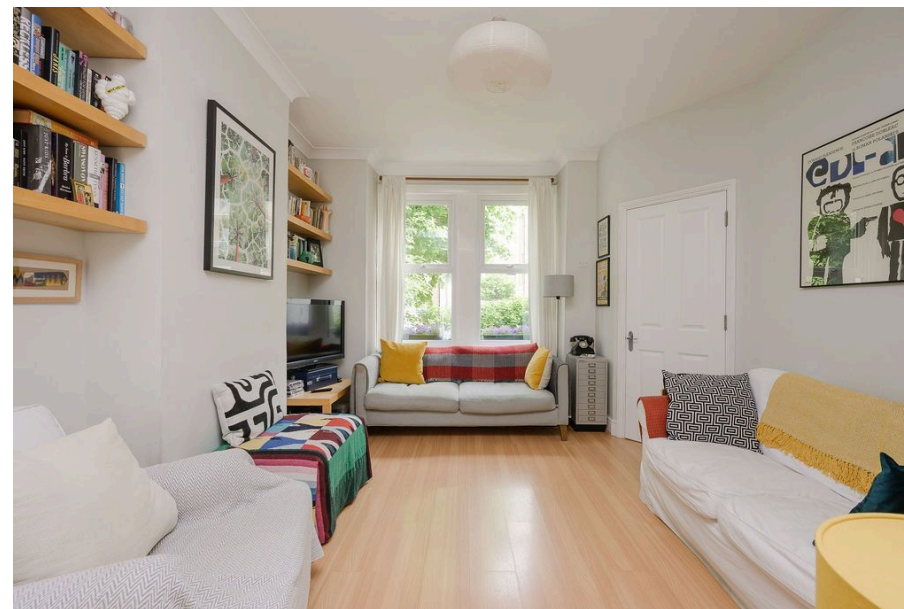
☎ 07792 947 756

## Edna Road, West Wimbledon, SW20

£775,000

3 2 1

- Three Bedroom Period House • Two Bath/Shower Rooms
- Spacious Through Lounge • Separate Fitted Kitchen
- Large Conservatory Extension • West Facing Sunny Aspect Garden
- Well Presented Accommodation over Three Floors • Popular Apostles Location
- Close to Raynes Park Station & High Street Amenities • Property Ref DA 0587 EPC D (Potential B)



This bright and spacious Edwardian family home (1,138 sq. ft.) comprises a through lounge, three bedrooms, two bathrooms, a large conservatory extension, and a private west-facing garden. Beautifully presented throughout, this charming home combines generous living accommodation with elegant period proportions creating a warm and inviting atmosphere ideal for family living. Situated in a highly sought-after residential cul-de-sac, the property enjoys convenient access to local amenities, excellent transport links, and green open spaces.

