



Caxton Street, Market Harborough

Market Harborough

£1,100 pcm

Deposit: £1,269.23

Date First Available: 07/08/2026

Furnishing: Unfurnished

This superb bay fronted Victorian mid-terrace house offers an ideal location for easy access to the town centre with amenities close by. The accommodation offers a generously sized living/dining room, inner hallway, fully fitted kitchen/breakfast room. Upstairs you will find two bedrooms and a newly refitted bathroom which includes a separate shower cubicle. To the outside of the property expect to see a neat retained forecourt which is low in maintenance and a beautiful landscaped rear garden that extends down to a hard standing with gates offering off street parking for two cars.

Entrance is gained into open plan living-dining room with laminate flooring, bay window and feature fireplace with electric fire. Leading off the living room is a useful WC with space under the stairs for storage. The modern kitchen offers wall and base units, integrated appliances to include a gas hob, electric oven and fridge-freezer with space and plumbing for both a washing machine and dishwasher. French doors open out to the rear garden offering a paved patio space for an outside table and chairs as well as beds planted with mature shrubs, ample lawn space and off street parking.

Both bedrooms are of double proportions with the main bedroom overlooking the front having a useful wardrobe.

Brand new bathroom featuring a white four piece suite to include a panel enclosed bath, separate shower cubicle, a low level WC and a wash hand basin.

The loft space is boarded with ladder access giving additional storage space.

Council tax band B

Living Area - 5.13m x 4.44m (10'82" x 11'43")

Dining Area - 5.51m x 4.44m (11'85" x 11'43")

WC - 3.23m x 0.91m (7'43" x 3'0")

Kitchen - 4.27m x 4.5m (14'0" x 10'57")

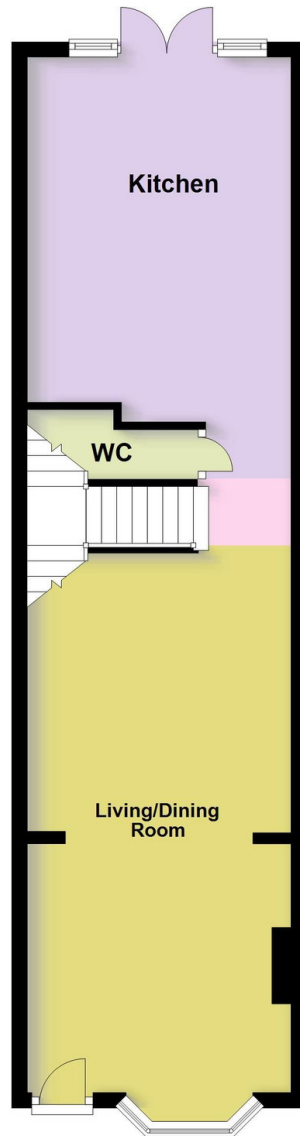
Bedroom One - 4.57m x 4.98m (11'48" x 10'76")

Bedroom Two - 3.58m x 3.51m (11'9" x 8'42")

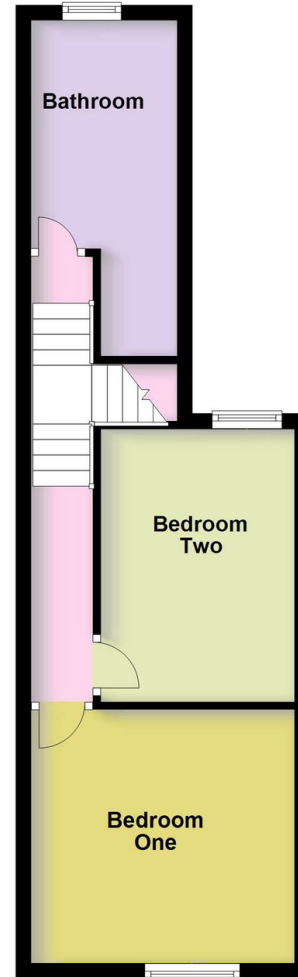




Ground Floor



First Floor



Henderson Connellan Market Harborough office 01858 410 400 | 63 High Street, Market Harborough, Leicestershire, LE16 7AF
marketharboroughsales@hendersonconnellan.co.uk | marketharboroughlettings@hendersonconnellan.co.uk



Disclaimer: These particulars do not form part of any offer or contract and should not be relied upon as statements or representations of fact. Any areas, measurements of distances are approximate. The text, photographs and plans are for guidance only and are not necessarily comprehensive.

