



36 Armstrong Road, Englefield Green, TW20 0RW

A charming three double bedroom semi-detached bungalow, quietly positioned in a highly sought-after central village location in Englefield Green.

This lovely home offers well-proportioned and versatile accommodation, including a spacious lounge, a fitted kitchen/diner ideal for everyday living and a bright conservatory overlooking the garden. There are three generous double bedrooms and a bathroom featuring a walk-in shower.

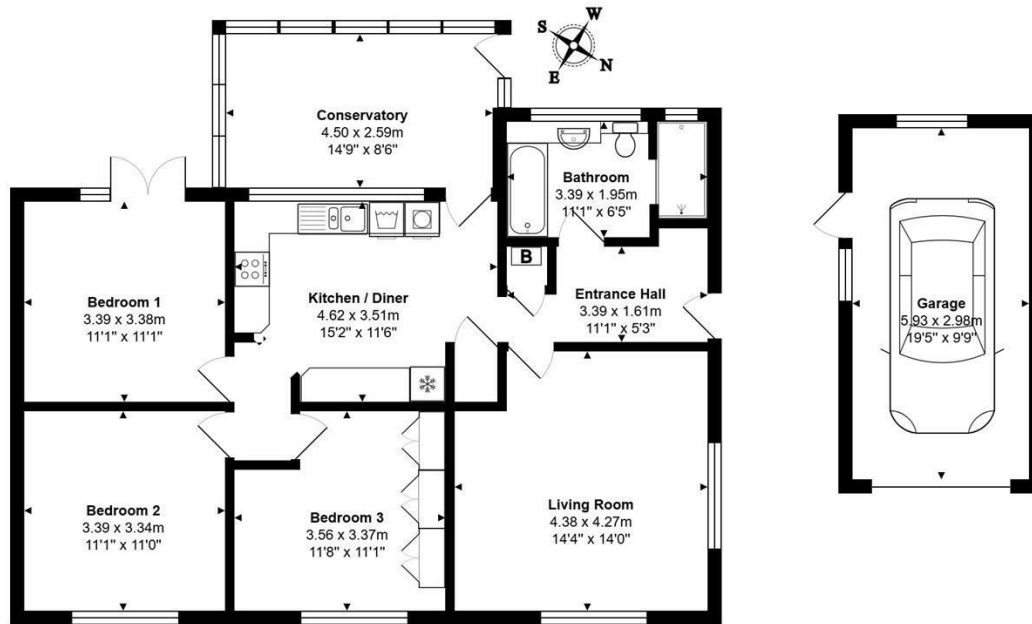
Further benefits include gas central heating, double glazing, a good size garage with driveway providing off-street parking.

To the rear, the property enjoys a lovely south/westerly aspect garden, perfect for afternoon and evening sun, offering a pleasant and private outdoor space and a haven for birdlife.

Offered to the market with no onward chain, this delightful bungalow presents an excellent opportunity for those seeking comfortable single-storey living in a prime village setting. EPC Rating: TBC.



Floor Plan



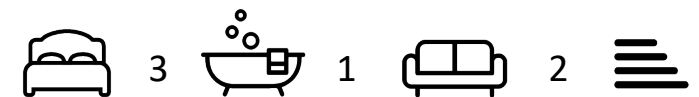
Total Area: 97.5 m² ... 1049 ft² (excluding garage)



Features

- Semi-detached
- Living Room
- Conservatory
- Bathroom/Walk-in Shower
- Garage & Own Drive
- cottage bungalow
- Big Kitchen/Diner
- Three Double Bedrooms
- Gas Central Heating
- No Onward Chain

10 St Judes Road, Englefield Green, Surrey TW20 0BY
Tel 01784 433696
sales@aspenestateagents.co.uk



Tenure - Freehold Council Tax Band - D

