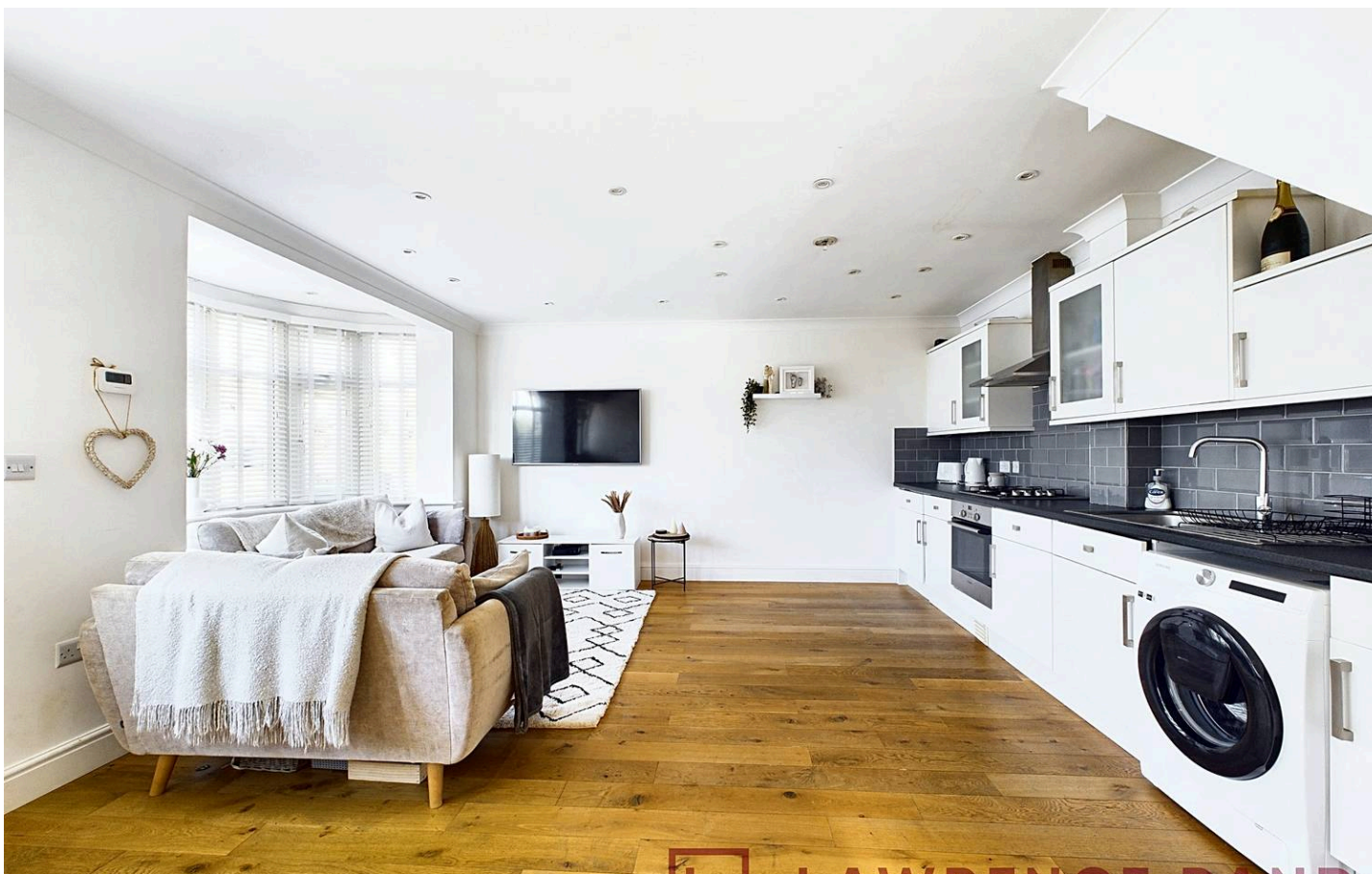




Victoria Road, Ruislip - HA4 9DG
Guide Price £425,000



Key Features & Description

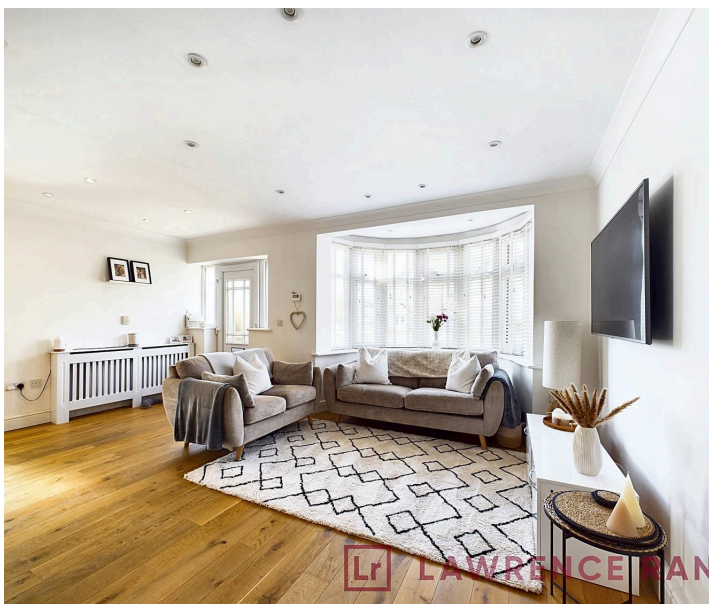
- Two bedroom house
- Excellent condition
- Ground-floor w/c
- Driveway
- Garden

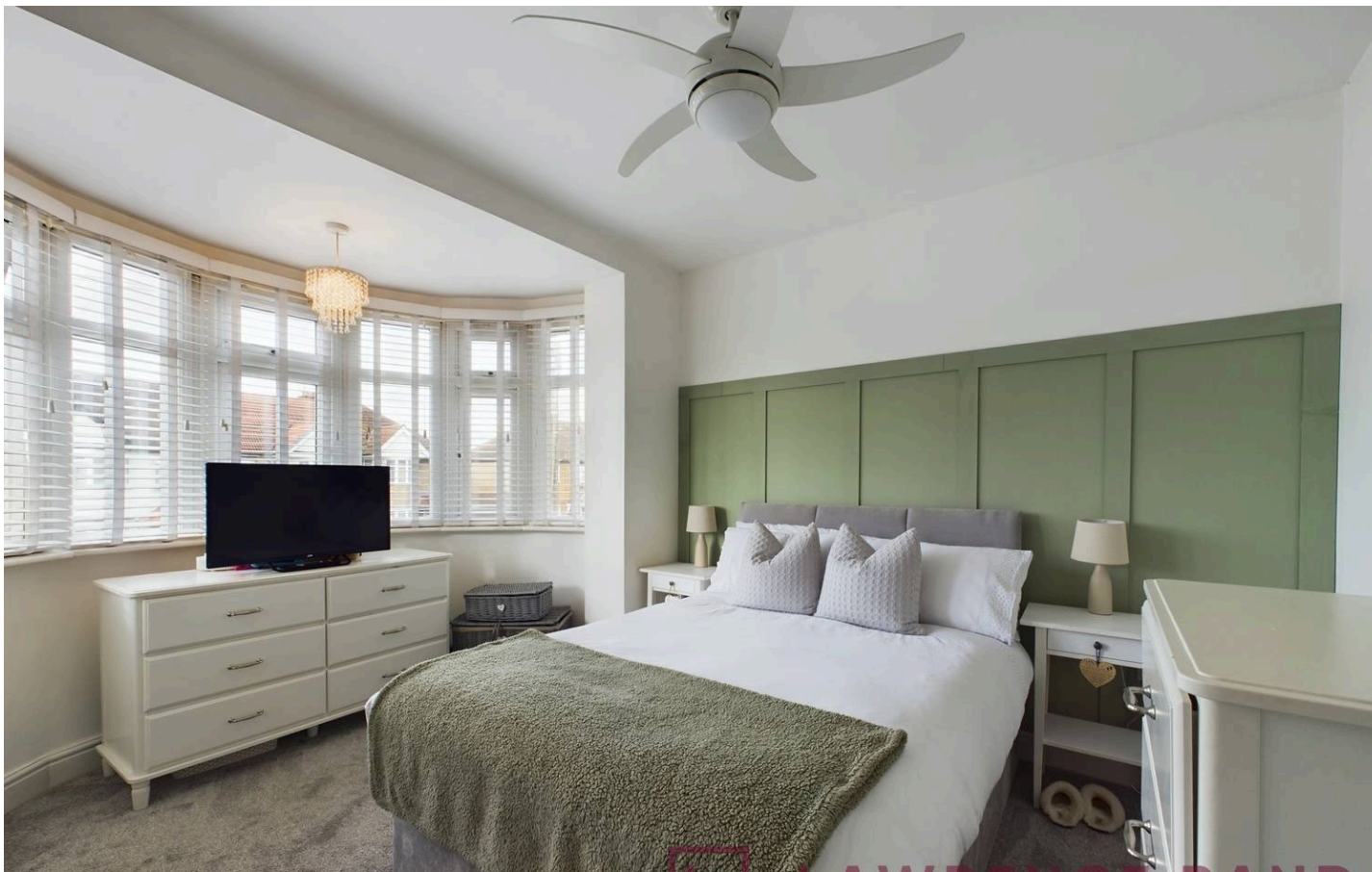
A modern two bedroom 'Cluster' house which is stylishly presented throughout offering contemporary living. The accommodation comprises of; entrance hallway, open plan reception and kitchen leading to a lobby area and door to w/c and stairs to first-floor. On the first-floor is a landing with doors to both bedrooms and family bathroom.

There is off street parking to the front for two cars and there is a private enclosed rear garden. (To access the garden you have to exit the property to the front and walk around to the rear section of the garden).

The property is situated on Victoria Road within easy reach of Ruislip Manor and South Ruislip with the Metropolitan, Piccadilly Central and mainline Stations, providing swift and easy access into London. There are a number of well-regarded local schools in the area and the A40/M40/M25 road network is easily accessible.

Presented with care by Lawrence Rand – helping you find the place you'll love to call home.





Nearest stations

Ruislip Gardens – approx 0.4 miles

South Ruislip – approx. 0.6 miles

Ruislip Manor – approx. 0.7 miles

Verified Material Information:

Council Tax band:D

EPC Energy Efficiency Rating: D

Suppliers:

Electricity supply: Mains, Water supply: Mains
water, Sewerage: Mains

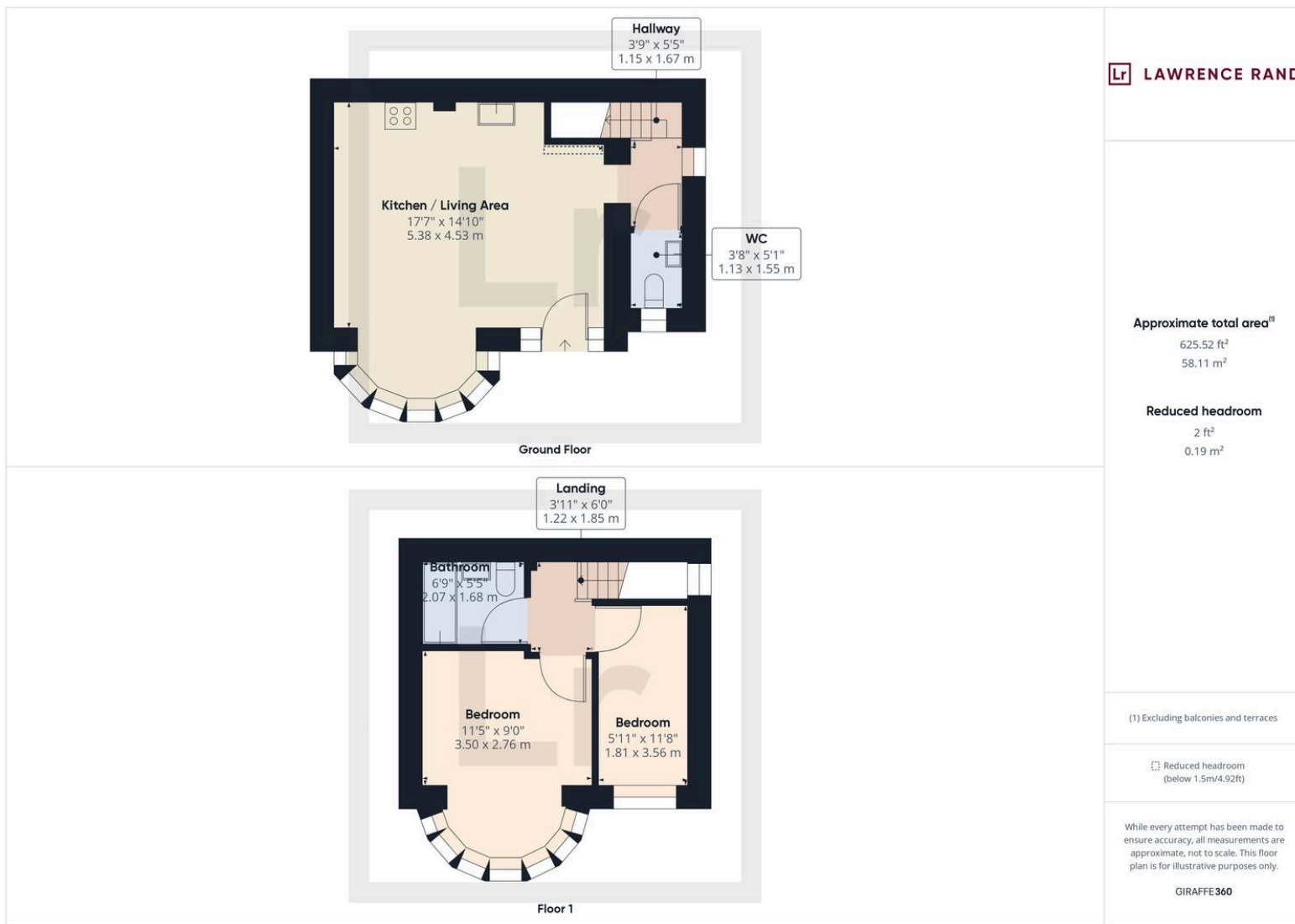
Heating: Gas central heating

Broadband & mobile coverage:

Broadband: FTTP (Fibre to the Premises)

Mobile coverage: O2 – Excellent, Vodafone –
Excellent, Three – Excellent, EE – Excellent





Lawrence Rand
 51 Victoria Road, Ruislip - HA4 9BH
 01895 632211
 sales@lawrence-rand.co.uk
 www.lawrence-rand.co.uk

Lawrence Rand Limited has made every reasonable effort to ensure the accuracy of the information provided. However, we accept no responsibility for errors, omissions, or misstatements. All measurements, distances, and descriptions are approximate and for guidance only. Prospective purchasers or tenants must verify all details independently. Some images may include AI-generated virtual staging to illustrate the potential of the property and are for visual guidance only. No warranty is given or implied, and these particulars do not form part of any offer or contract. Lawrence Rand reserves the right to amend or withdraw any property without notice.