

# East Croft House

Harrow • Middlesex • HA2 0ER  
Offers In Excess Of: £300,000



coopers  
est 1986



This spacious second floor, two bedroom apartment is located in the heart of Harrow. The property is within very convenient access to a selection of transport links with tube and bus services to Central London, Harrow on the Hill and Heathrow, as well as a selection of local shops and amenities including a Waitrose supermarket.

The property also boasts UPVC double glazing throughout, gas fired central heating, a good energy performance rating and long lease. Viewing comes highly recommended.

Note: A member of Coopers' staff has a personal interest in this residence.

Second floor apartment

Two spacious bedrooms

Contemporary fitted kitchen

24ft living room

Family bathroom

Large private balcony

Lift access

Chain free

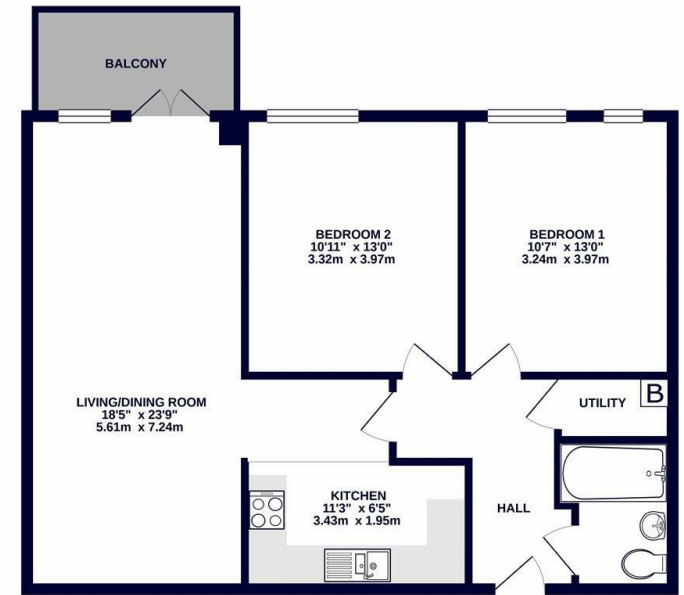
Rented for £1750pcm (Over 5% Yield)

770 sq.ft

Available Date



2ND FLOOR  
770 sq.ft. (71.5 sq.m.) approx.



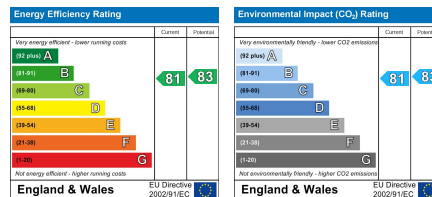
TOTAL FLOOR AREA: 770 sq.ft. (71.5 sq.m.) approx.  
Whilst every attempt has been made to ensure the accuracy of the floorplan contained here, measurements of doors, windows, rooms and any other items are approximate and no responsibility is taken for any error, omission or misstatement. This plan is for illustrative purposes only and should be used as such by any prospective purchaser. The services, systems and appliances shown here are not tested and no guarantee as to their operability or efficiency can be given.  
Made with Metragen 01022



0208 017 6000

18 Bridge Street, Pinner,  
Middlesex, HA5 3JF  
pinner@coopersresidential.co.uk

CoopersResidential.co.uk



Important Notice: These particulars, whilst believed to be accurate are set out as a general outline only for guidance and do not constitute any part of an offer or contract. Intending purchasers should not rely on them as statements or representation of fact, but must satisfy themselves by inspection or otherwise has the authority to make or give any representation or warranty in respect of the property.

coopers  
est 1986